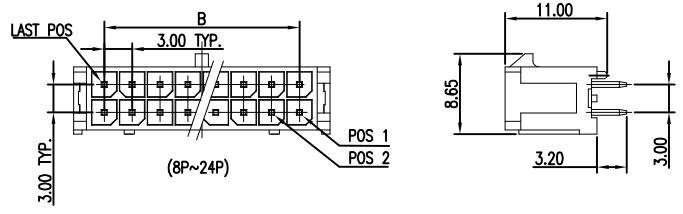


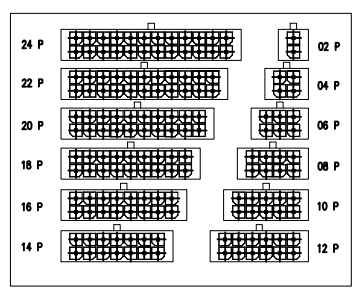
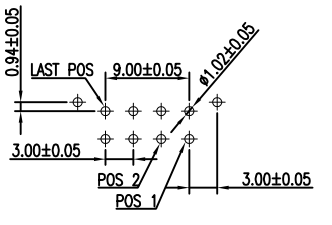
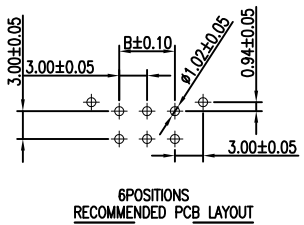
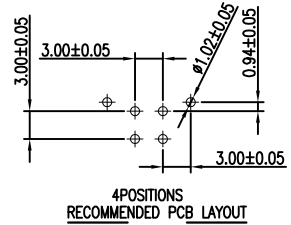
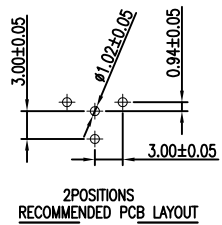
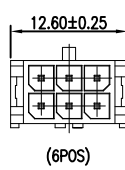
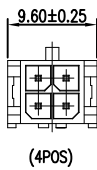
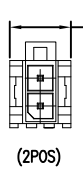
NOTE:
 1. MATERIAL:
 HOUSING: THERMOPLASTIC HIGH TEMPERATURE. COLOR-BLACK
 CONTACT: COPPER ALLOY.
 2. CONTACT FINISH:
 CONTACT: 80u" MIN TIN, PLATED OVER 50U" MIN NICKEL PLATED
 3. DIMENSIONAL :

P/N	POS	A	B
1-2834216-1	2	6.60	---
1-2834216-2	4	9.60	3.00
1-2834216-3	6	12.60	6.00
1-2834216-4	8	15.60	9.00
1-2834216-5	10	18.60	12.00
1-2834216-6	12	21.60	15.00
1-2834216-7	14	24.60	18.00
1-2834216-8	16	27.60	21.00
1-2834216-9	18	30.60	24.00
2-2834216-1	20	33.60	27.00
2-2834216-2	22	36.60	30.00
2-2834216-3	24	39.60	33.00



THIS DRAWING IS A CONTROLLED DOCUMENT. DWG: GEORGE FU 07Dec2016. SHI MING 07Dec2016. NAME: 3.0MM PITCH WAFER (VERTICAL) DIP TYPE.

INCHES: DIM	UNLESS OTHERWISE SPECIFIED	UNIT: MILLIMETER	PROJECT SPEC: 108-137257	SIZE: CAGE CODE	DRAWING NO: A200779	RESTRICTED TO: -
1/16" P L/C	0.0031	0.05	APPLICATION SPEC: 114-137257	DATE: 08DEC2016	DRAWING NO: C-2834216	REV: A
1/32" P L/C	0.0015	0.025	VECT: -	SCALE: 1:1	SHEET: 1 of 2	REV: A
1/64" P L/C	0.00075	0.0125	VECT: -	CUSTOMER DRAWING		



DETAIL D

THIS DRAWING IS A CONTROLLED DOCUMENT. DWG: GEORGE FU 07Dec2016. SHI MING 07Dec2016. NAME: 3.0MM PITCH WAFER (VERTICAL) DIP TYPE.

INCHES: DIM	UNLESS OTHERWISE SPECIFIED	UNIT: MILLIMETER	PROJECT SPEC: 108-137257	SIZE: CAGE CODE	DRAWING NO: A200779	RESTRICTED TO: -
1/16" P L/C	0.0031	0.05	APPLICATION SPEC: 114-137257	DATE: 08DEC2016	DRAWING NO: C-2834216	REV: A
1/32" P L/C	0.0015	0.025	VECT: -	SCALE: 1:1	SHEET: 2 of 2	REV: A
1/64" P L/C	0.00075	0.0125	VECT: -	CUSTOMER DRAWING		