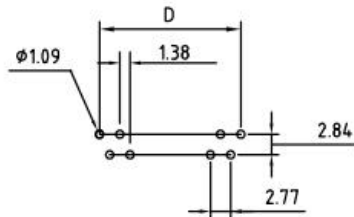
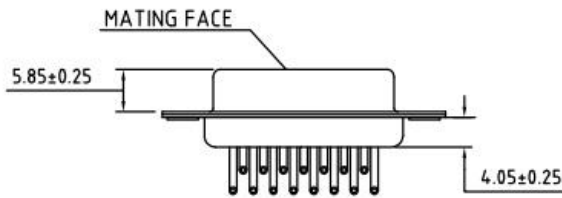
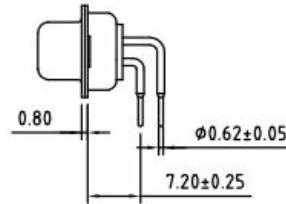
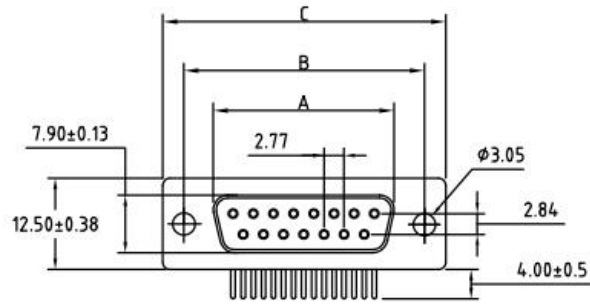


ROHS COMPLIANT

REV.	DESCRIPTION	DATE	ECN NO.
01	NEW DESIGN	2018/09/29	-



RECOMMENDED P.C.B LAYOUT

No. of Contact	A ±0.25 ±.010	B ±0.13 ±.005	C ±0.38 ±.015	D ±0.25 ±.010
09	16.30	25.00	30.80	11.08
15	24.80	33.30	39.20	19.39
25	38.30	47.04	53.04	33.24
37	54.80	63.50	69.40	49.86

REMARKS:

1. MATERIALS AND FINISH

SHELL : STEEL MATERIAL, FRONT SHELL NICKEL FINISHED
 BACK SHELL NICKEL FINISHED
 INSULATOR : PBT THERMOPLASTIC, 30% GLASS
 FILLED, UL 94V-0 RATED
 CONTACT MATERIAL : BRASS
 CONTACT FINISH : FULL GOLD FLASH

2. ELECTRICAL CHARACTERISTICS

CONTACT CURRENT RATING : 5.0 AMPS
 CONTACT RESISTANCE : 30 MILLIOHMS MAX.
 DIELECTRIC WITHSTANDING VOLTAGE : 1000 V AC MIN.
 INSULATION RESISTANCE : 5000 MEGAOHMS MIN.
 TEMPERATURE RATING : -55°C ~ +105°C

DRAWN:	JEFF.ZHOU	2018.09.29	东莞市赢海电子有限公司
CHECKED:	KEVIN.JIN	2018.09.29	
APPROVED:	JINGUO.YANG	2018.09.29	
	Sheet 1 of 1	Code 000	TITLE: D-SUB MOUNTING BOARD Type(FEMALE)_R/A
TOLERANCE UNLESS SPECIFIED: .XX ± 0.13		Angles: ±2°	REV. 01 Part No: GDM25F-7. 2mm90°