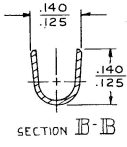
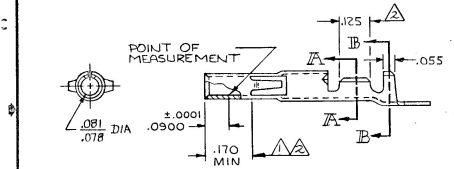
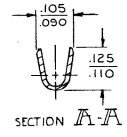
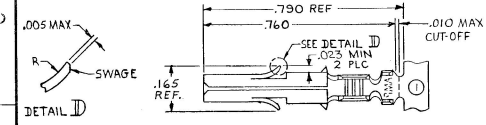


THIS DRAWING IS UNPUBLISHED. RELEASED FOR PUBLICATION
 © COPYRIGHT

REVISIONS				DATE	APPROVED
P	F	ZONE	LTR	DESCRIPTION	
✓	✓	Y		REVISED PER ECR-12-013523	10/6/012 TM



- △ .000030 THICK GOLD OVER NICKEL ON INSIDE OF RECEPTACLE; REMAINDER OF CONTACT IS NICKEL PLATED.
- △ .000030 THICK GOLD OVER NICKEL ON INSIDE OF RECEPTACLE AND WIRE BARREL; REMAINDER OF CONTACT IS NICKEL PLATED.
- △ INSULATION RANGE: .040-.100 DIA.

3506B9-1	GOLD	△ .010 BRASS	350570-1
		△ .010 PH. BRZ	350570-6
3506B9-3	PRE-TIN	△ .010 PH. BRZ	350570-3
3506B9-2	GOLD	△ .010 BRASS	350570-2
3506B9-1	PRE-TIN	△ .010 BRASS	350570-1
LOOSE PIECE (REF)	FINISH	MATERIAL	PART NO

UNLESS OTHERWISE SPECIFIED DIMENSIONS ARE IN INCHES. TOLERANCES UNLESS OTHERWISE SPECIFIED: DECIMALS ±.010 ANGLES ±.010	CONTRACT NO	DR MFEHER 5-26-81	
	CHK	J.S. Weeks 6/9/81	
	APPD	R.B.K. 6-10-81	
	DSGN APPD		
WIRE RANGE	24-18 AWG		
INSULATION RANGE	△		
OTHER APPD			
NAME		SOCKET, UNIVERSAL MATE-N-LOK	
SIZE	PSCM NO	DRAWING NO	
B	00779	350570	
SCALE	4-1	SHEET	#

STE TE Connectivity
 CUSTOMER DRAWING