

4

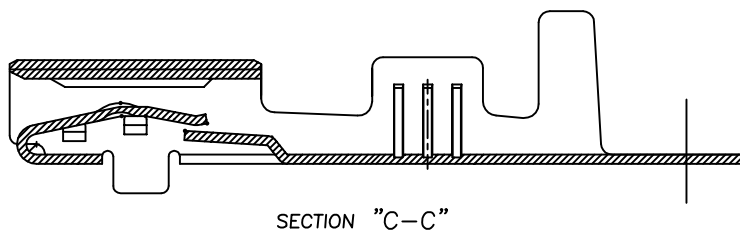
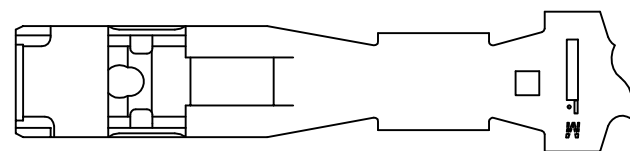
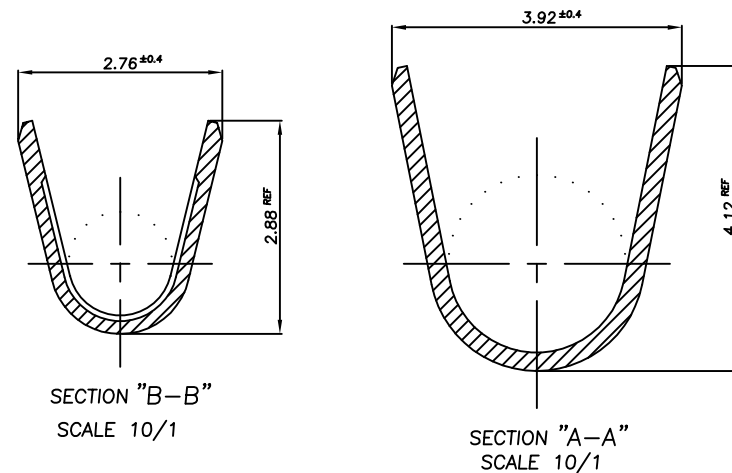
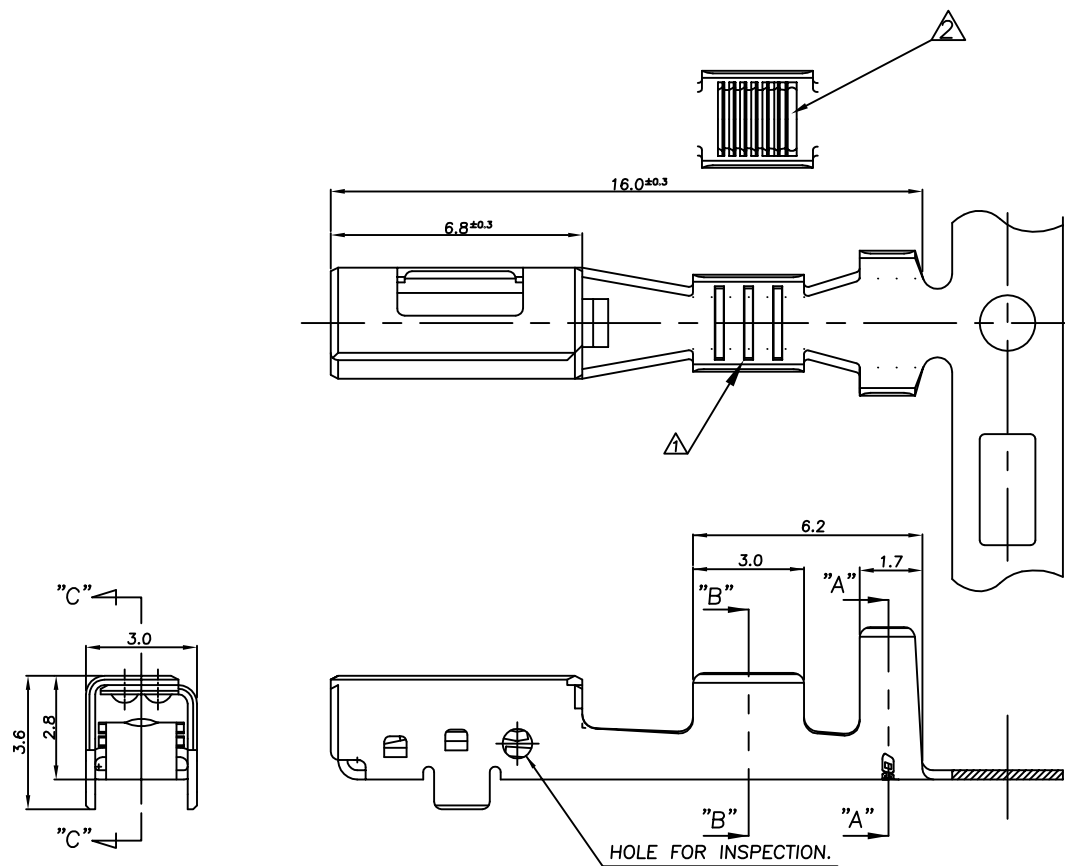
3

2

1

THIS DRAWING IS UNPUBLISHED. RELEASED FOR PUBLICATION  
© COPYRIGHT BY TYCO ELECTRONICS CORPORATION, ALL RIGHTS RESERVED.

LOC	DIST	REVISIONS					
		P	LTR	DESCRIPTION	DATE	DWN	APVD
DS	-		B1	REVISED (ECR-12-003220)	24.FEB.'12	KT	HG



- NOTES
- ▲ THREE SERRATION CENTERED IN WIRE BARREL
  - ▲ SEVEN SERRATION CENTERED IN WIRE BARREL

▲	ALUMINUM 0.75 SQ	PRE-TINNED	CuNiSi Alloy, 0.25THK	9-1743655-1
▲	0.75-1.25 SQ	PRE-TINNED	CuNiSi Alloy, 0.25THK	1743655-1
	WIRE RANGE	FINISH	MATERIAL	PART NUMBER

<small>THIS DRAWING IS A CONTROLLED DOCUMENT FOR TYCO ELECTRONICS CORPORATION IT IS SUBJECT TO CHANGE AND THE CONTROLLING ENGINEERING ORGANIZATION SHOULD BE CONTACTED FOR THE LATEST REVISION.</small>		DWN KT JUNG CHK KT LIM APVD HG CHD PRODUCT SPEC APPLICATION SPEC WEIGHT CUSTOMER DRAWING		TE Connectivity	
DIMENSIONS: MM	TOLERANCES UNLESS OTHERWISE SPECIFIED: 0 <XX<10 ± 0.2 10 ≤ XX <30 ± 0.25 ANGLES ± 3°	NAME		.090III MLC RECEP CONTACT (M)	
MATERIAL SEE TABLE	FINISH SEE TABLE	SIZE	CAGE CODE	DRAWING NO	RESTRICTED TO
		A3	00779	C-1743655	-
			SCALE 5/1	SHEET 1 OF 1	REV B1