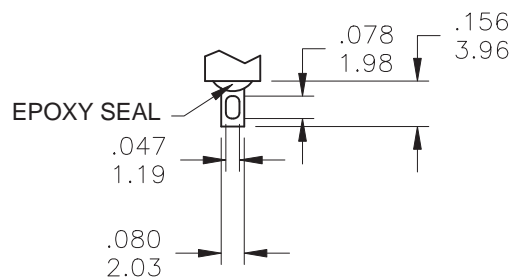
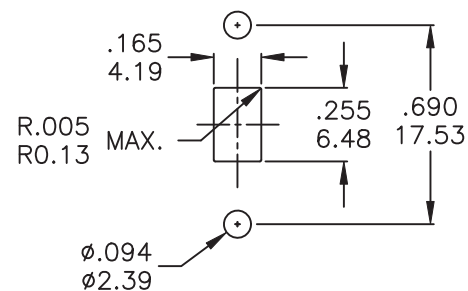
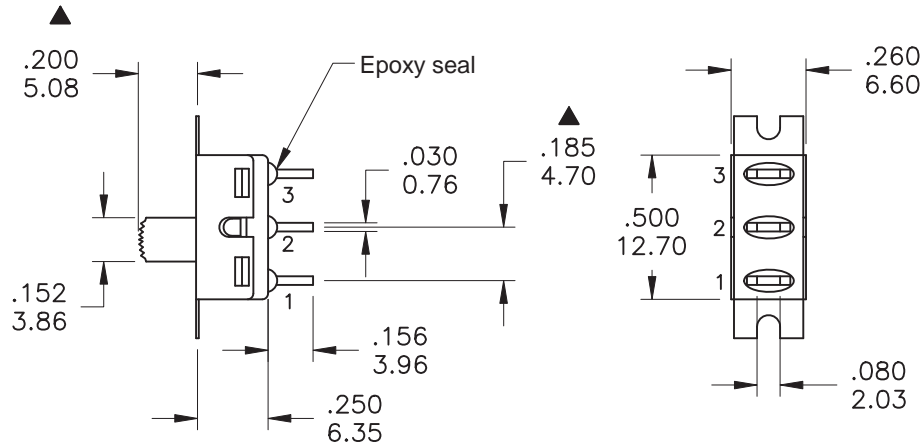
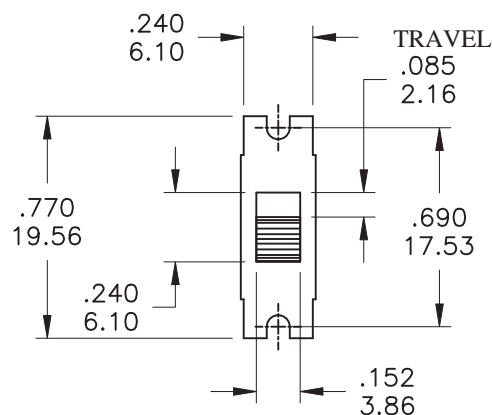


本公司智慧財產，未經同意不得複製
DAILYWELL copyright, may not be used
without permission from DAILYWELL



SOLDER LUG

Model No.	POS.1	POS.2	POS.3
5MS1	ON	NONE	ON
Term. Comm.	2-1	N/A	2-3
SCHEMATIC			

SWITCH FUNCTION

SPECIFICATIONS

MECHANICAL LIFE: 30,000 make-and-break cycles.
CONTACT RESISTANCE: 10 mΩ max. initial @ 2-4VDC
 100mA for both silver and gold plated contacts.
INSULATION RESISTANCE: 1,000 MΩ min.
DIELECTRIC STRENGTH: 1,000 Vrms min. @sea level.
OPERATING TEMPERATURE: -40°C to 85°C.

MATERIALS

CASE: Diallyl phthalate (DAP) (UL94v-0).
ACTUATOR: Nylon, black std.
HOUSING: Stainless Steel.
CONTACT&TERMINAL: Copper alloy.
TERMINAL SEAL: Epoxy.



	CONTACT PLATING	TERMINAL PLATING	RATINGS
Q	Silver	Silver	5 Amps @ 120 VAC or 28VDC
C	Gold over Silver	Gold over silver	2 Amps @250 VAC
R	Gold	Gold	0.4 Volt-Amps(VA) max. @20V max. (AC or DC)

德利威電子股份有限公司
DAILYWELL ELECTRONICS CO.,LTD.

符號	原尺寸	修改後尺寸	變更日期
1	Ⓐ	操作溫度-30°C 修訂為-40°C	JUL-30-2018
2	Ⓑ		
3	Ⓒ		
4	Ⓓ		
5	Ⓔ		

SCALE (比例) : 3 : 2
TOLERANCE (公差) :
 0.00 mm ± 0.25mm
 0.0 mm ± 0.40mm
ANGULAR : ± 5°
FILE NAME : 5MSP0138

TITLE 圖名	Slide Switches			SIZE 圖紙	A4
DWG NO. 圖號	5MS1S102BM1QES			UNIT 單位	inch mm
REV. 版本	B	DATE 日期	JUN - 22 - 2005	SHEET 張數	1 of 1
CHECKED BY 審核	陳燈財		DRAWN BY 製圖	BLUE	