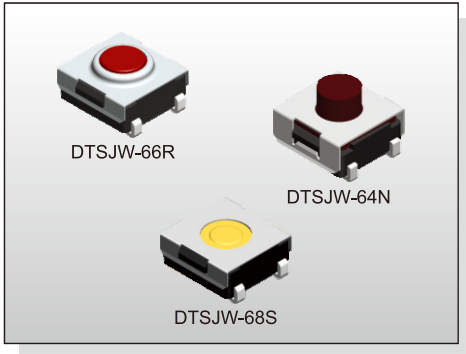


# TACT SWITCH DTSJW-6 SERIES

6x6 J SMT  
Washable Type



## FEATURES

- ※Sealed
- ※Reflow solderable
- ※Dust proof with high reliability

## APPLICATION

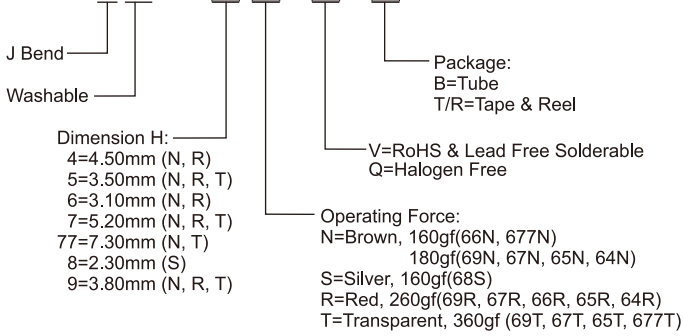
- ※Audio, OA equipment
- ※Instrumentation, Communication
- ※White goods

## SPECIFICATION

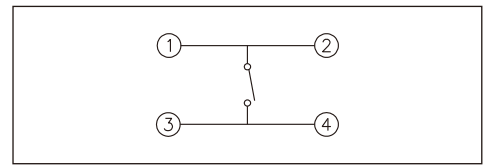
Contact Rating	50mA, 12V DC
Contact Resistance	100mΩ max.
Insulation Resistance	100MΩ min. 500V DC
Dielectric Strength	250V AC/1 minute
Operating Force	160±50gf, Brown(N) 66/677 160±50gf, Silver(S) 68 180±50gf, Brown(N) 69/67/65/64 260±70gf, Red(R) 69/67/66/65/64 360±90gf, Transparent(T) 69/67/65/677
Travel	0.25mm 68S/66N/66R/677 0.45mm (69/67N,R)/(65/64N,R,T) 0.6mm 69/67T
Operating Life	100,000 cycles min. for 68/66/677 500,000 cycles min. for 69/67/65/64
Operating Temp.	-25°C ~ +70°C
Storage Temp.	-30°C ~ +80°C

## HOW TO ORDER

D T S J W - 6



## CIRCUIT



## PACKAGE

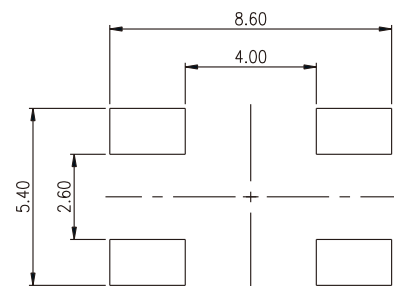
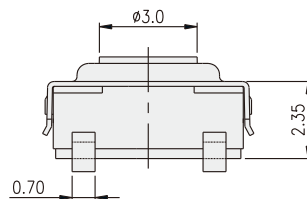
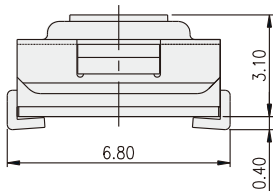
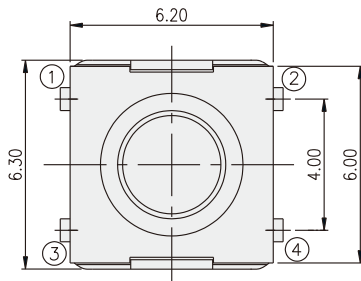
<Tube>

75 pcs

<Tape & Reel>

- DTSJW-64, 67: 900 pcs
- DTSJW-65, 69: 1800 pcs
- DTSJW-66: 1900 pcs
- DTSJW-68: 2000 pcs
- DTSJW-677: 650 pcs

## DTSJW-66



P.C.B. LAYOUT

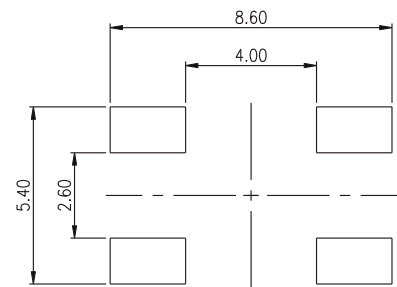
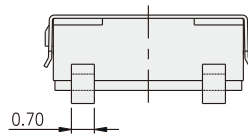
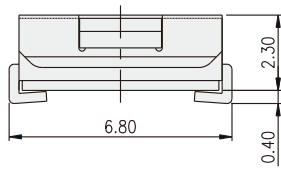
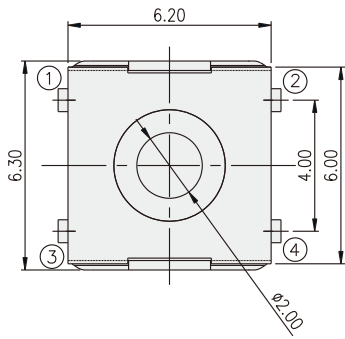
TACT SWITCH

TACT SWITCH  
**DTSJW-6** SERIES

6x6 J SMT  
 Washable Type



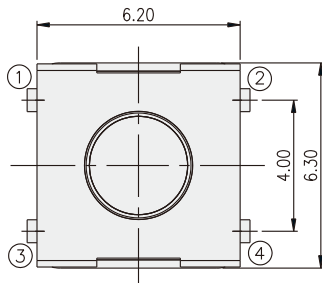
DTSJW-68



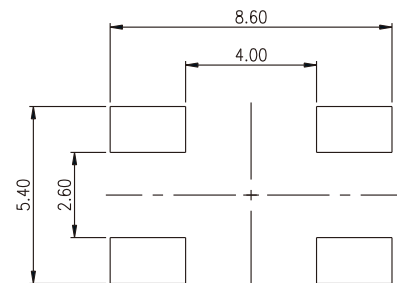
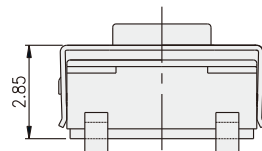
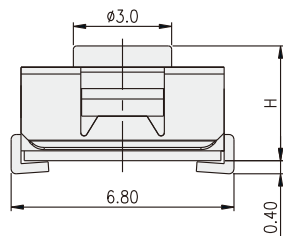
P.C.B. LAYOUT

TACT SWITCH

DTSJW-6□



PART NO.	H
DTSJW-64	4.50
DTSJW-65	3.50
DTSJW-67	5.20
DTSJW-69	3.80
DTSJW-677	7.30



P.C.B. LAYOUT