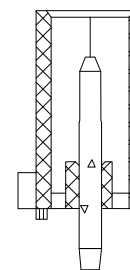
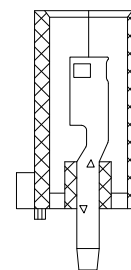
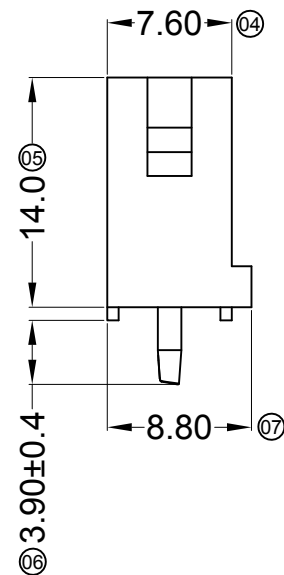
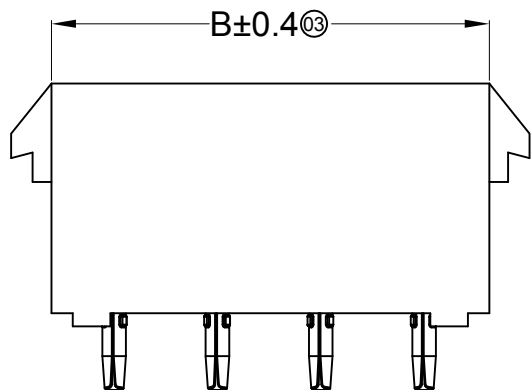


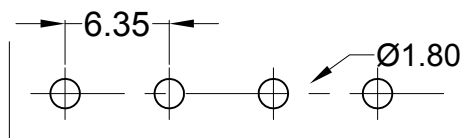
■ Specifications :

- Voltage rating: 600V AC / DC
- Current rating: 15A AC / DC
- Withstanding voltage: 5000V AC/minute
- Temperature range: -25°C~+85°C
- Insulation resistance: ≥1000MΩ
- Contact resistance: ≤3.5mΩ
- After environmental testing: ≤10mΩ



TYPE 1

TYPE 2



Recommended P.C.B Layout
General Tolerance±0.05

Poles	Dimensions(mm)	
	A	B
02	6.35	13.97
03	12.70	20.32
04	19.05	26.67
05	25.40	33.02
06	31.75	39.37
07	38.10	45.72
08	44.45	52.07
09	50.80	58.42
10	57.15	64.77

AO	VER	MODIFICATION	DRAW	DATE
----	-----	--------------	------	------

TOLERANCE UNLESS OTHERWISE				DRAWN	CK	tan
X.	±0.30	X°	±5°	CHKD		
.X	±0.20	.X°	±2°	APPD		
.XX	±0.08	.XX°	±1°	VIEW	⊕	≡
.XXX	±0.03	.XXX°	±0.5°			

XFCN 兴飞连接器有限公司 CONNECTORS XFCN CONNECTORS CO., LTD.		PRODUCT NAME	6.35mm Crimp Style Connectors
		PART. NO.	M9848-NP-X-2

SHEET	1/1
DATE	2010. 4. 12
UNITS	mm
SCALE	1:1
DWG. NO.	009