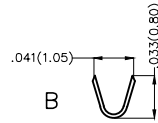
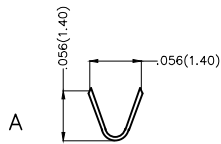
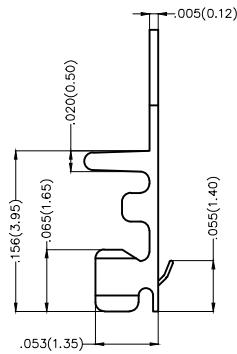
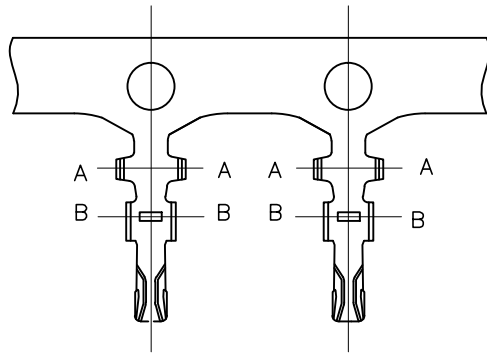


REV	LOCATIONS	DESCRIPTION	DATE	REVISER	APPD

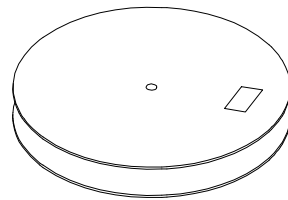
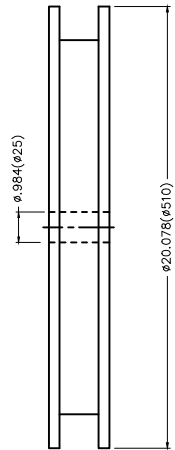
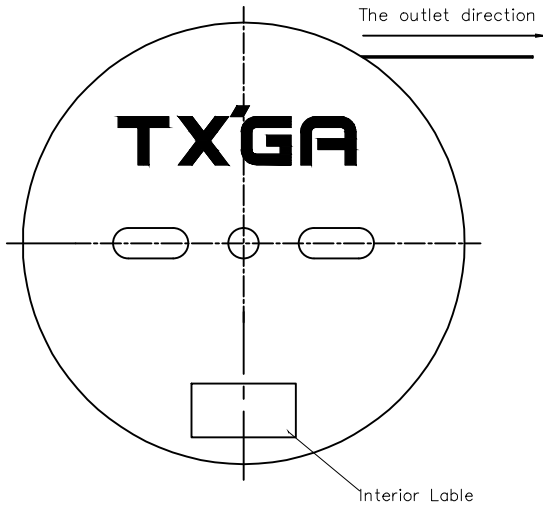
Electrical

Material: Phosphor Bronze C5191
 All Corners and Radll Have a Maximum
 Radius of 0.1mm unless Otherwise Specified
 Plating: Tin-Plated
 Wire Range: 32AWG~28AWG
 Applicable Housing: FHG10001 Series
 Minimum Order Quantity : 20,000 PCS

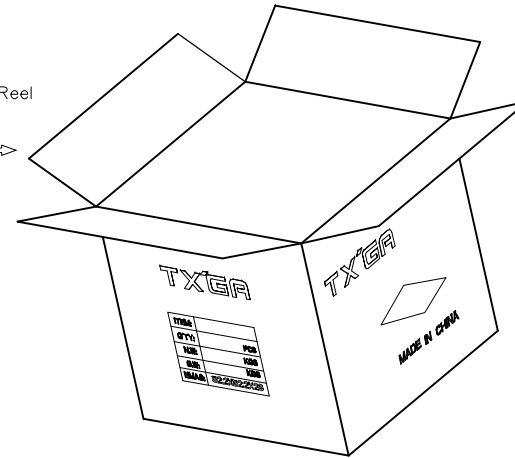


 THIRD ANGLE PROJECTION	GENERAL TOLERANCES (UNLESS SPECIFIED)		APPROVE BY FRANK	DATE 25/JUN/13	PART NO. FT10001-F2H	ITEM NO. FT10001	 Leader Of Industry	
	X.±.012(0.30)	X.±5°	CHECKED BY JACOB	DATE 25/JUN/13	TITLE Wire to Board Pitch 1.0mm(Terminal)			REV 0
	DESIGN UNITS Inch (metric)	X.X±.008(0.20)	.X°±2°	DRAWN BY CHERRY	DATE 25/JUN/13	THIS DRAWING CONTAINS INFORMATION THAT IS PROPRIETARY TO TXGA INDUSTRIAL ELECTRONICS(S.Z)CO.,LTD AND SHOULD NOT BE USED WITHOUT WRITTEN PERMISSION		
	SCALE 5:1	SIZE A4	X.XXX±.004(0.10)	.XXX°±0.5°				

REV	LOCATIONS	DESCRIPTION	DATE	REVISER	APPD



20,000Pcs/Reel



 THIRD ANGLE PROJECTION	GENERAL TOLERANCES (UNLESS SPECIFIED)		APPROVE BY FRANK	DATE 25/JUN/13	PART NO. FT10001-F2H	ITEM NO. FT10001	 Leader Of Industry
	DESIGN UNITS Inch (metric)	X. \pm 0.012(0.30)	X. \pm 5'	CHECKED BY JACOB	DATE 25/JUN/13	TITLE Wire to Board Pitch 1.0mm(Terminal)	
SCALE 5:1	SIZE A4	X.XX \pm .006(0.15)	.XX \pm 1'	DRAWN BY CHERRY	DATE 25/JUN/13	THIS DRAWING CONTAINS INFORMATION THAT IS PROPRIETARY TO TXGA INDUSTRIAL ELECTRONICS(S.Z)CO.,LTD AND SHOULD NOT BE USED WITHOUT WRITTEN PERMISSION	
		X.XXX \pm .004(0.10)	.XXX \pm 0.5'			REV 0	SHEET NO. 2/2