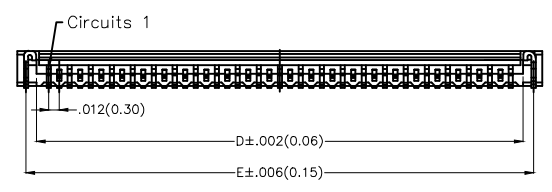
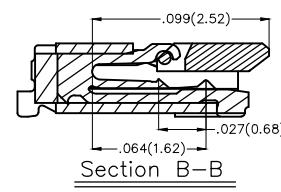
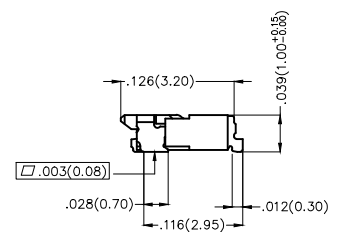
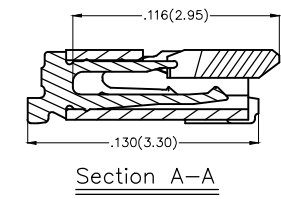
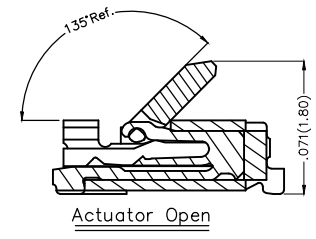
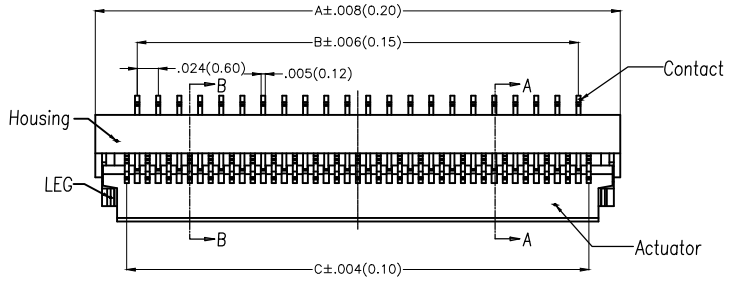


REV	LOCATIONS	DESCRIPTION	DATE	REVISER	APPD

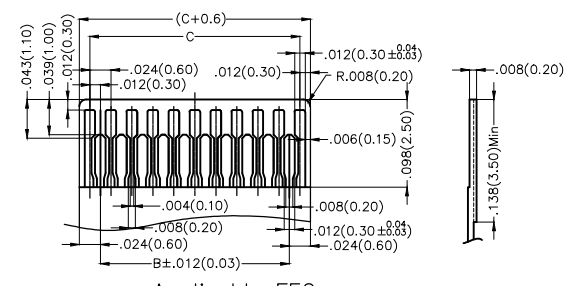
**SPECIFICATIONS**

**Electrical**  
 Current Rating: 0.2A AC(rms)/DC  
 Voltage Rating: 30V AC(rms)/DC  
 Contact Resistance: 20 mΩ Max  
 Insulation Resistance: 50 MΩ Min  
 Withstanding Voltage: 200V AC r.m.s  
 Temperature Range-Operating: -25°C~+85°C

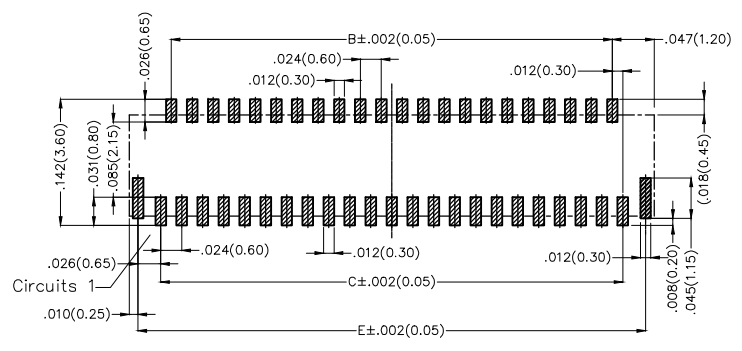
**Material and Plating**  
 Housing: LCP UL 94V-0  
 Actuator: LCP UL 94V-0  
 Terminal: Phosphor Bronze/ Gold Plated  
 Stopper: Phosphor Bronze/ Tin Plated



Circuits (n)	Part No.	Dimensions(In/mm)				
		A	B	C	D	E
13	FFC03001-13SBB114XXM	.213(5.40)	.118(3.00)	.142(3.60)	.169(4.30)	.193(4.90)
15	FFC03001-15SBB114XXM	.236(6.00)	.142(3.60)	.165(4.20)	.193(4.90)	.217(5.50)
21	FFC03001-21SBB114XXM	.307(7.80)	.213(5.40)	.236(6.00)	.264(6.70)	.287(7.30)
23	FFC03001-23SBB114XXM	.330(8.40)	.236(6.00)	.260(6.60)	.287(7.30)	.335(7.90)
25	FFC03001-25SBB114XXM	.354(9.00)	.260(6.60)	.283(7.20)	.311(7.90)	.335(8.50)
29	FFC03001-29SBB114XXM	.402(10.20)	.307(7.80)	.331(8.40)	.358(9.10)	.382(9.70)
31	FFC03001-31SBB114XXM	.425(10.80)	.331(8.40)	.354(9.00)	.382(9.70)	.406(10.30)
35	FFC03001-35SBB114XXM	.472(12.00)	.378(9.60)	.402(10.20)	.429(10.90)	.453(11.50)
39	FFC03001-39SBB114XXM	.520(13.20)	.425(10.80)	.449(11.40)	.476(12.10)	.500(12.70)
41	FFC03001-41SBB114XXM	.543(13.80)	.449(11.40)	.472(12.00)	.500(12.70)	.524(13.30)
45	FFC03001-45SBB114XXM	.590(15.00)	.496(12.60)	.520(13.20)	.547(13.90)	.571(14.50)
51	FFC03001-51SBB114XXM	.661(16.80)	.567(14.40)	.591(15.00)	.618(15.70)	.642(16.30)



**Applicable FFC Recommended Dimension**



**Recommended P.C.Board Layout**

**Ordering Information**

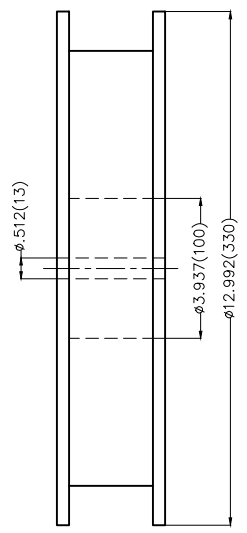
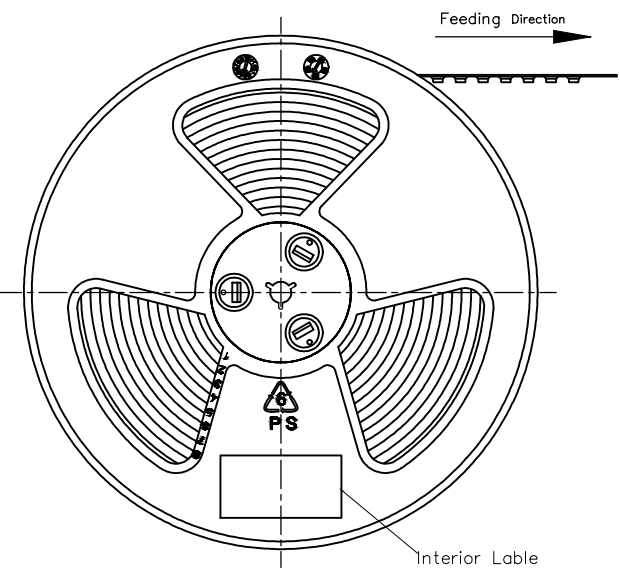
FFC 030 01 - XX S B B 1 1 4 XX M  
 1 2 3 4 5 6 7 8 9 10 11 12

1   Category FFC-FPC	2   Series Number 030-Pitch0.3mm	3   Distinction No. 01	4   Circuits XX	5   Assemble Layout S-SMT	6   Entry Angle B-90° Angle
7   Contact Position B-Bottom	8   ZIF 1-ZIF	9   Plating 1-Gold Plated	10   Material-Resin 4-LCP	11   Color-Resin W5-Housing: Natural, Actuator: Black K6-Black	12   Packaging M-Reel

 <b>THIRD ANGLE PROJECTION</b>  DESIGN UNITS Inch (metric)  SCALE 5:1  SIZE A4	<b>GENERAL TOLERANCES (UNLESS SPECIFIED)</b> X.±.012(0.30) X.'±5' X.X±.008(0.20) X.'±2' X.XX±.006(0.15) X.'X'±1" X.XXX±.004(0.10) X.'XX'±0.5'		<b>APPROVE BY</b> FRANK  <b>CHECKED BY</b> JACOB  <b>DRAWN BY</b> CHERRY	<b>DATE</b> 28/JUN/13  <b>DATE</b> 28/JUN/13  <b>DATE</b> 28/JUN/13	<b>PART NO.</b> FFC03001-XXSBB114XXM  <b>TITLE</b> FPC/FFC connector 0.3mm Bottom contact SMT	<b>ITEM NO.</b> FFC03001  THIS DRAWING CONTAINS INFORMATION THAT IS PROPRIETARY TO TXGA INDUSTRIAL ELECTRONICS(S.Z)CO.,LTD AND SHOULD NOT BE USED WITHOUT WRITTEN PERMISSION	 <b>TXGA</b> Leader Of Industry  REV 0   SHEET NO. 1/2
--	---	--	---	--	--	---	--

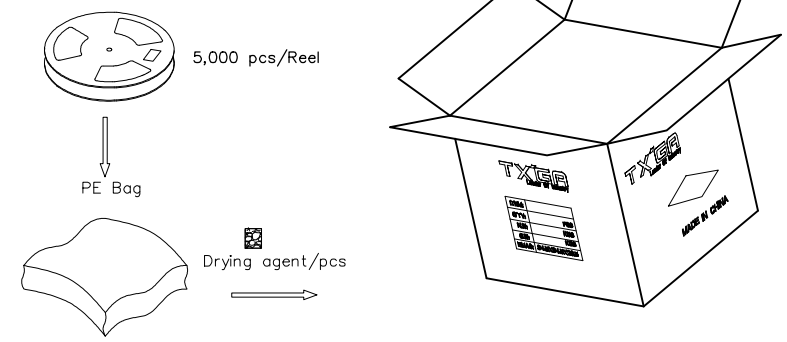
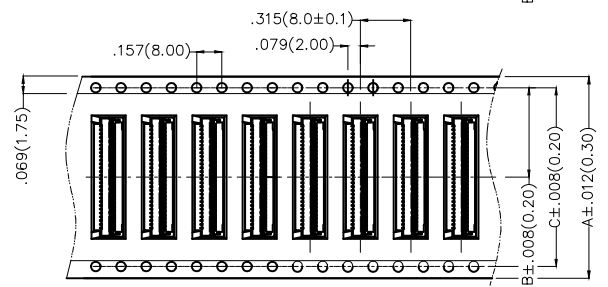
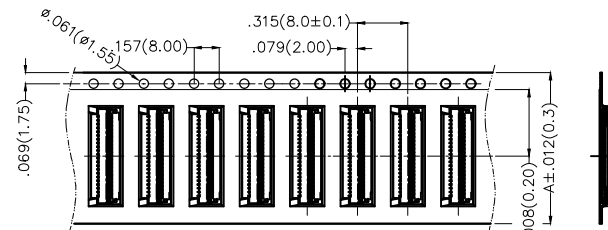
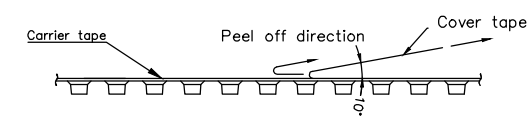
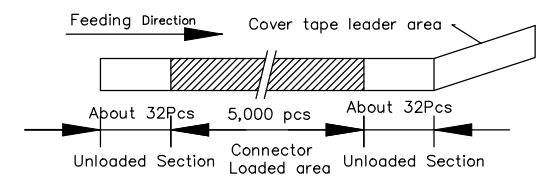
REV	LOCATIONS	DESCRIPTION	DATE	REVISER	APPD

A  
B  
C  
D  
E  
F



- Note:
- 10 sprocket hole cumulative tolerance  $\pm 0.2$
  - Carrier camber is within 1.0mm in 250mm
  - Material: White Conductive polystyrene Alloy 100% recyclable
  - All dimensions meet EIA-481-3 requirements
  - Peel off force of cover tape & carrier tape: 20g~130g(0.2N~1.3N)
  - Component load per 13" reel: 5,000 pcs

Circuits (n)	Dimensions(in./mm)		
	A	B	C
13-25	.630(16.0)	.295(7.5)	—
27-51	.945(24.0)	.453(11.5)	—



 THIRD ANGLE PROJECTION DESIGN UNITS Inch (metric) SCALE 5:1 SIZE A4	GENERAL TOLERANCES (UNLESS SPECIFIED)		APPROVE BY FRANK	DATE 28/JUN/13	PART NO. FFC03001-XXSBB114XXM	ITEM NO. FFC03001	 Leader Of Industry
	X.±.012(0.30)	X.'±5'	CHECKED BY JACOB	DATE 28/JUN/13	TITLE FPC/FFC connector 0.3mm Bottom contact SMT		
	X.XX±.008(0.20)	X.'±2'	DRAWN BY CHERRY	DATE 28/JUN/13	THIS DRAWING CONTAINS INFORMATION THAT IS PROPRIETARY TO TXGA INDUSTRIAL ELECTRONICS(S.Z)CO.,LTD AND SHOULD NOT BE USED WITHOUT WRITTEN PERMISSION		SHEET NO. 2/2
	X.XX±.006(0.15)	.XX'±1"					
	X.XXX±.004(0.10)	.XXX'±0.5'					

1 2 3 4 5 6 7 8