



3R Ceramic Surge Arresters

SPECIFICATION

Changzhou Wujin Jiangnan Discharge Tube Co.,Ltd

Add:Zouqu Town Industrial Zone,Wujin Changzhou City,Jiangsu,China

Tel: 0519-83631254

Fax: 0519-83631533

Email:jiangnan@jiangnan-cn.cn

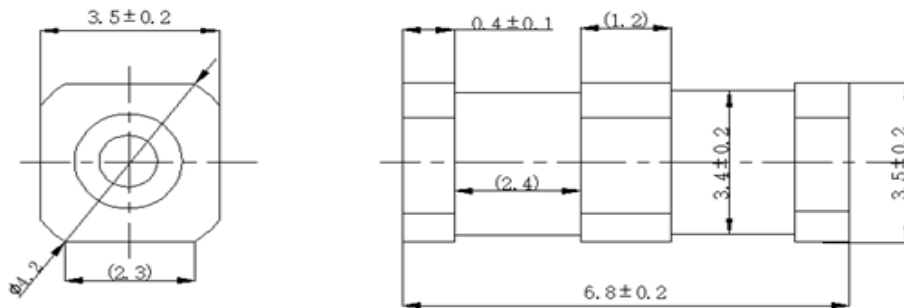


• **Electrical Characteristics**

Type: 3R470AL3-1

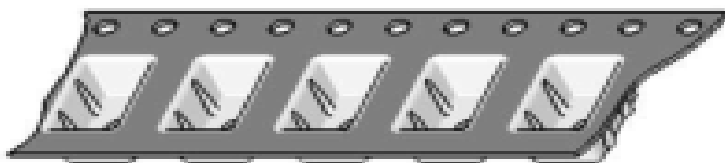
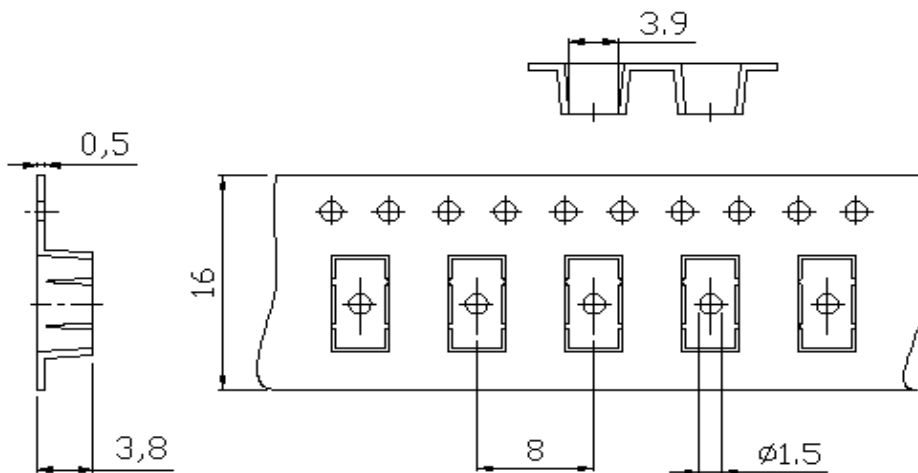
DC spark-over voltage	360~560	V
Impulse spark-over voltage		
at 100V/ μ s - for 99% of measured values	<850	V
-typical values of distribution	<750	V
at 1 kV/ μ s - for 99% of measured values	<1000	V
-typical values of distribution	<850	V
Service life		
10 operations[5×(+)&5×(-)] 5/320 μ s	150	A
10 operations[5×(+)&5×(-)] 8/20 μ s	2	kA
300 operations 8/20 μ s	100	A
Insulation resistance at 100 V _{DC}	>1	G Ω
Capacitance at 1 MHz	<1.0	pF
Arc voltage at 1 A	~12	V
Glow to arc transition current	~1	A
Glow voltage	~60	V
Weight	~0.4	g
Operation and storage temperature	-40...+90	°C
Marking	Without	

Dimensional drawing



The device is 0.05mm

Packing advice T470 = SMD-tape with 2000 pcs





Note:

- 1) Total current through center electrode, half value through tip respectively ring electrode.
- 2) Product coplanar degrees offset $< 0.15\text{mm}$.
- 3) The red mark opposite to meet coplanarity requirement (红色标记对面确保满足共面度要求)

