

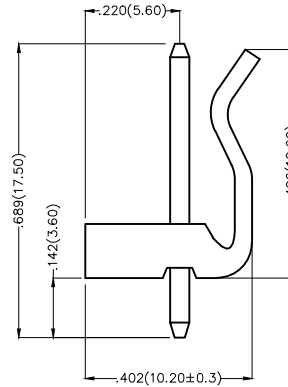
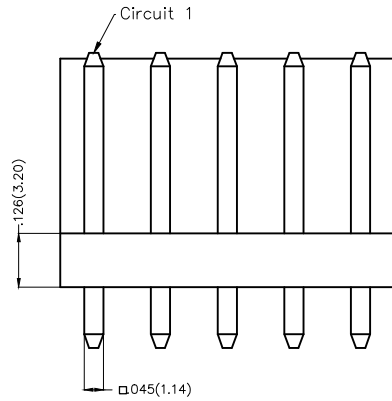
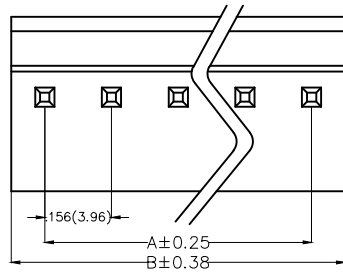
REV	LOCATIONS	DESCRIPTION	DATE	REVISER	APPD
1	△	Dimension $\phi.065(\phi 1.65)$ Change to $\phi.071(1.80)$	20150919	CHERRY	FAN

Electrical

Current Rating: 6A AC(rms)/DC
Voltage Rating: 250V AC(rms)/DC
Contact Resistance: 10 mΩ Max
Insulation Resistance: 1000 MΩ MIN
Withstanding Voltage: 1500V AC r.m.s
Temperature Range-Operating: -25°C ~ +85°C

Material and Plating

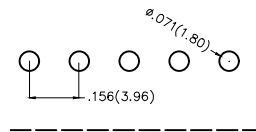
Housing: PA66(UL 94V-0)
Contact Pin: Brass
Plating: Tin Plated



Ordering Information

FWF 396 03 — S XX S 2 2 T B
1 2 3 4 5 6 7 8 9 10

1	Category FWF-Wafer	2	Series Number 396-Pitch 3.96mm	3	Distinction No. 03	4	Row Option Single Row	5	Circuits XX	6	Entry Angle S-180° Vertical
7	Plating 2-Tin Plated	8	Material-Resin 2-PA66	9	Color-Resin T-Transparent	10	Packaging B-PE Bag				

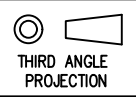



Recommended P.C.Board Layout

 THIRD ANGLE PROJECTION	GENERAL TOLERANCES (UNLESS SPECIFIED)		APPROVE BY FRANK	DATE 19/SEP/15	PART NO. FWF39603-SXXS22TB	ITEM NO. FWF39603	 Leader Of Industry	
	DESIGN UNITS Inch (metric)	X.±.012(0.30)	.X'±5'	CHECKED BY CHERRY	DATE 19/SEP/15	TITLE Wire to Board (Wafer) Pitch 3.96mm 180° Vertical (DIP)		REV 1
SCALE 5:1	SIZE A4	X.XX±.006(0.15)	.XX'±1'	DRAWN BY JACOB	DATE 19/SEP/15	THIS DRAWING CONTAINS INFORMATION THAT IS PROPRIETARY TO TXGA INDUSTRIAL ELECTRONICS(S.Z)CO.,LTD AND SHOULD NOT BE USED WITHOUT WRITTEN PERMISSION		

REV	LOCATIONS	DESCRIPTION	DATE	REVISER	APPD
1	△	Dimension $\phi.065(\phi1.65)$ Change to $\phi.071(1.80)$	20150919	CHERRY	FAN

Material and Plating : Housing PA66 UL94V-0 , Tin Plated.			
Circuits (n)	Part No.	Dimensions(in/mm)	
		A	B
2	FWF39603-S02S22TB	.156(3.96)	.311(7.92)
3	FWF39603-S03S22TB	.311(7.92)	.468(11.88)
4	FWF39603-S04S22TB	.468(11.88)	.624(15.84)
5	FWF39603-S05S22TB	.624(15.84)	.780(19.80)
6	FWF39603-S06S22TB	.780(19.80)	.935(23.76)
7	FWF39603-S07S22TB	.935(23.76)	1.091(27.72)
8	FWF39603-S08S22TB	1.091(27.72)	1.247(31.68)
9	FWF39603-S09S22TB	1.247(31.68)	1.403(35.64)
10	FWF39603-S10S22TB	1.403(35.64)	1.559(39.60)
11	FWF39603-S11S22TB	1.559(39.60)	1.715(43.56)
12	FWF39603-S12S22TB	1.715(43.56)	1.871(47.52)

 THIRD ANGLE PROJECTION	GENERAL TOLERANCES (UNLESS SPECIFIED)		APPROVE BY FRANK	DATE 19/SEP/15	PART NO. FWF39603-SXXS22TB	ITEM NO. FWF39603	 Leader Of Industry	
	DESIGN UNITS Inch (metric)	$X.\pm.012(0.30)$	$X.\pm5'$	CHECKED BY CHERRY	DATE 19/SEP/15	TITLE Wire to Board (Wafer) Pitch 3.96mm 180° Vertical (DIP)		REV 1
SCALE 5:1	SIZE A4	$X.XX\pm.008(0.20)$	$.X'\pm2'$	DRAWN BY JACOB	DATE 19/SEP/15	THIS DRAWING CONTAINS INFORMATION THAT IS PROPRIETARY TO TXGA INDUSTRIAL ELECTRONICS(S.Z)CO.,LTD AND SHOULD NOT BE USED WITHOUT WRITTEN PERMISSION		
		$X.XX\pm.006(0.15)$	$.XX'\pm1'$					
		$X.XXX\pm.004(0.10)$	$.XXX'\pm0.5'$					