

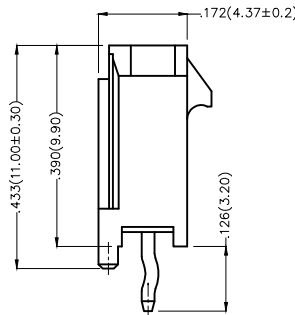
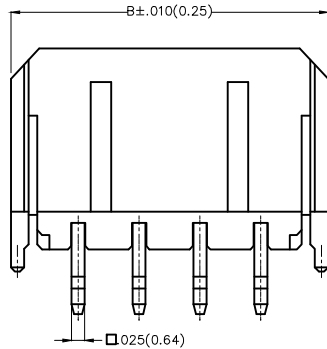
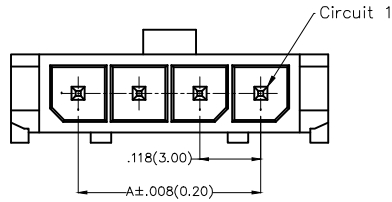
REV	LOCATIONS	DESCRIPTION	DATE	REVISER	APPD

Electrical

Current Rating: 5.0A AC(rms)/DC  
Voltage Rating: 250V AC(rms)/DC  
Contact Resistance: 10 mΩ Max  
Insulation Resistance: 1000 MΩ MIN  
Withstanding Voltage: 1500V AC r.m.s  
Temperature Range—Operating: -25°C~+85°C

Material and Plating

Housing: PA66( UL 94V-0)  
Contact Pin: Brass  
Plating: Tin Plated

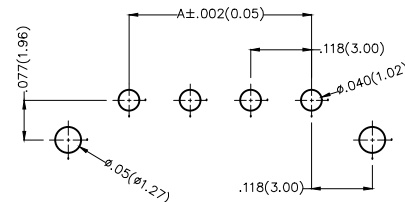


Material and Plating : Housing PA66 UL94V-0 , Tin Plated.			
Circuits (n)	Part No.	Dimensions(in/mm)	
		A	B
2	FWF30004-S02S22K6B	.118(3.00)	.380(9.65)
3	FWF30004-S03S22K6B	.236(6.00)	.498(12.65)
4	FWF30004-S04S22K6B	.354(9.00)	.616(15.65)
5	FWF30004-S05S22K6B	.472(12.00)	.734(18.65)
6	FWF30004-S06S22K6B	.591(15.00)	.852(21.65)
7	FWF30004-S07S22K6B	.709(18.00)	.967(24.65)
8	FWF30004-S08S22K6B	.827(21.00)	1.089(27.65)
9	FWF30004-S09S22K6B	.945(24.00)	1.207(30.65)
10	FWF30004-S10S22K6B	1.063(27.00)	1.325(33.65)
11	FWF30004-S11S22K6B	1.181(30.00)	1.443(36.65)
12	FWF30004-S12S22K6B	1.299(33.00)	1.561(39.65)

Ordering Information

FWF 300 04 - S XX S 2 2 K6 B  
1 2 3 4 5 6 7 8 9 10

1   Category FWF—Wafer	2   Series Number 300—Pitch 3.0mm	3   Distinction No. 04	4   Row Option Single Row	5   Circuits XX	6   Entry Angle S—180° Vertical
7   Plating 2—Tin Plated	8   Material—Resin 2—PA66	9   Color—Resin K6—Black	10   Packaging B—PE Bag		



Recommended P.C.Board Layout

THIRD ANGLE PROJECTION		GENERAL TOLERANCES (UNLESS SPECIFIED)		APPROVE BY	DATE	PART NO.	ITEM NO.	TXGA Leader Of Industry
DESIGN UNITS Inch (metric)	SCALE	SIZE	X.±.012(0.30)	FRANK	01/JUL/13	FWF30004-SXXS22K6B	FWF30004	
	5:1	A4	X.X±.008(0.20)	CHECKED BY	DATE	TITLE Wire to Board (Wafer) Pitch 3.0mm 180° Vertical (DIP)		
			X.XX±.006(0.15)	CHERRY	01/JUL/13	THIS DRAWING CONTAINS INFORMATION THAT IS PROPRIETARY TO TXGA INDUSTRIAL ELECTRONICS(S.Z)CO.,LTD AND SHOULD NOT BE USED WITHOUT WRITTEN PERMISSION		
		X.XXX±.004(0.10)	.XX±1'	DRAWN BY	DATE			
			.XXX±0.5'	JACOB	01/JUL/13			