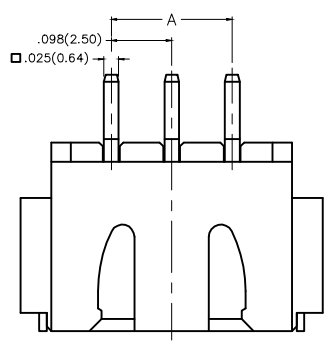
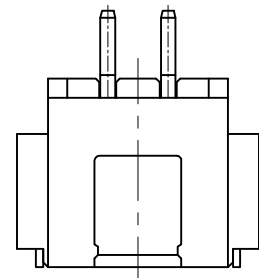
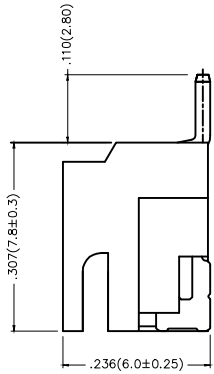


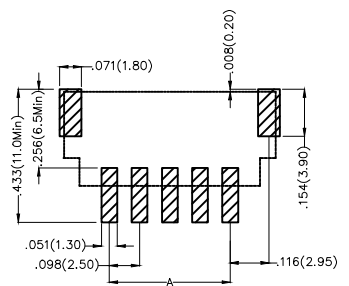
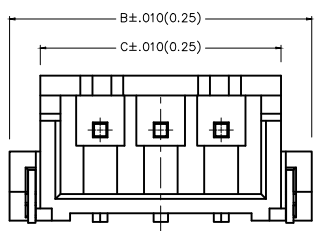
REV	LOCATIONS	DESCRIPTION	DATE	REVISER	APPD



3-12Circuits



2Circuits



Recommended P.C. Board Layout


Electrical  
 Current Rating: 3.0A AC(rms)/DC  
 Voltage Rating: 250V AC(rms)/DC  
 Contact Resistance: 20 mΩ Max  
 Insulation Resistance: 1000 MΩ MIN  
 Withstanding Voltage: 1000V AC r.m.s  
 Temperature Range—Operating: -25°C~+85°C

Material and Plating  
 Housing: PA9T( UL 94V-0)  
 Contact Pin: Brass  
 Plating: Tin Plated

Ordering Information

FWF 250 21 — S XX B 2 X W5 M  
 1 2 3 4 5 6 7 8 9 10



1 Category FWF—Wafer	2 Series Number 250—Pitch 2.5mm	3 Distinction No. 21	4 Row Option Single Row	5 Circuits XX	6 Entry Angle B—90° Angle
7 Plating 2—Tin Plated	8 Material—Resin 4—PA9T	9 Color—Resin W5—White	10 Packaging M—Reel		

THIRD ANGLE PROJECTION	GENERAL TOLERANCES (UNLESS SPECIFIED)		APPROVE BY FRANK	DATE 01/JUL/13	PART NO. FWF25021—SXXB24W5M	ITEM NO. FWF25021	 Leader Of Industry
	DESIGN UNITS Inch (metric)	X.±.012(0.30) X.±5°	CHECKED BY JACOB	DATE 01/JUL/13	TITLE Wire to Board (Wafer) Pitch 2.5mm 90° Angled (SMT)		
SCALE 5:1	SIZE A4	X.XX±.006(0.15) .XX±1°	DRAWN BY CHERRY	DATE 01/JUL/13	THIS DRAWING CONTAINS INFORMATION THAT IS PROPRIETARY TO TXGA INDUSTRIAL ELECTRONICS(S.Z.)CO.,LTD AND SHOULD NOT BE USED WITHOUT WRITTEN PERMISSION		
		X.XXX±.004(0.10) .XXX±0.5°					

REV	LOCATIONS	DESCRIPTION	DATE	REVISER	APPD

Material and Plating : Housing PA9T UL94V-0 , Tin Plated.

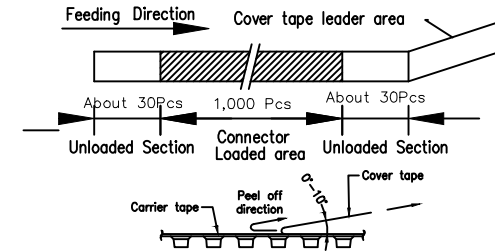
Circuits (n)	Part No.	Dimensions(in/mm)		
		A	B	C
2	FWF25021-S02B24W5M	.098(2.50)	.394(10.00)	.293(7.45)
3	FWF25021-S03B24W5M	.197(5.00)	.492(12.50)	.392(9.95)
4	FWF25021-S04B24W5M	.295(7.50)	.591(15.00)	.490(12.45)
5	FWF25021-S05B24W5M	.394(10.00)	.689(17.50)	.589(14.95)
6	FWF25021-S06B24W5M	.492(12.50)	.787(20.00)	.687(17.45)
7	FWF25021-S07B24W5M	.591(15.00)	.886(22.50)	.785(19.95)
8	FWF25021-S08B24W5M	.689(17.50)	.984(25.00)	.884(22.45)
9	FWF25021-S09B24W5M	.787(20.00)	1.083(27.50)	.982(24.95)
10	FWF25021-S10B24W5M	.886(22.50)	1.181(30.00)	1.081(27.45)
11	FWF25021-S11B24W5M	.984(25.00)	1.024(32.50)	1.179(29.95)
12	FWF25021-S12B24W5M	1.083(27.50)	1.378(35.00)	1.278(32.45)

 THIRD ANGLE PROJECTION	GENERAL TOLERANCES (UNLESS SPECIFIED)		APPROVE BY	DATE	PART NO.	ITEM NO.	 Leader Of Industry
	X.±.012(0.30)	X.±5'	FRANK	01/JUL/13	FWF25021-SXXB24W5M	FWF25021	
DESIGN UNITS Inch (metric)	X.X±.008(0.20)	.X'±2'	CHECKED BY	DATE	TITLE		REV 0    SHEET NO. 1/2
	X.XX±.006(0.15)	.XX'±1'	JACOB	01/JUL/13	Wire to Board (Wafer) Pitch 2.5mm 90° Angl (SMT)		
SCALE	SIZE	X.XXX±.004(0.10)	DRAWN BY	DATE	THIS DRAWING CONTAINS INFORMATION THAT IS PROPRIETARY TO TXGA INDUSTRIAL ELECTRONICS(S.Z)CO.,LTD AND SHOULD NOT BE USED WITHOUT WRITTEN PERMISSION		
5:1	A4	.XXX'±0.5'	CHERRY	01/JUL/13			

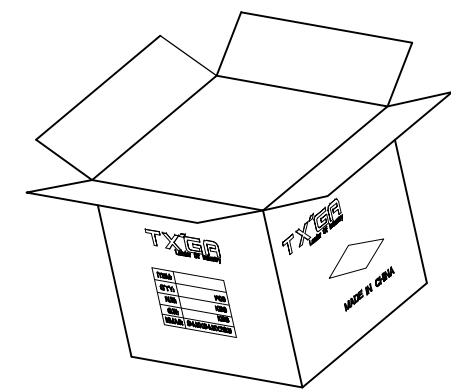
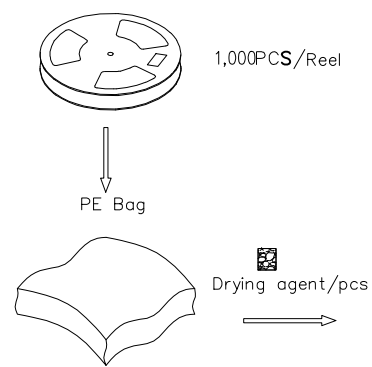
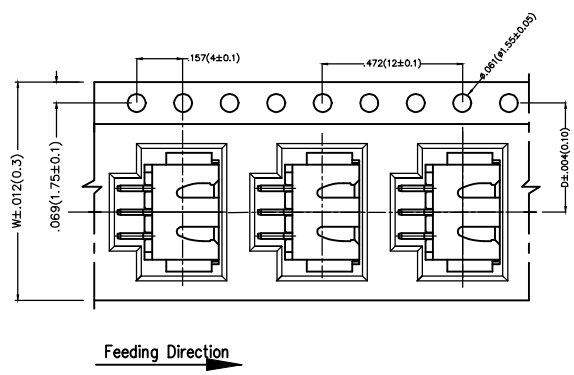
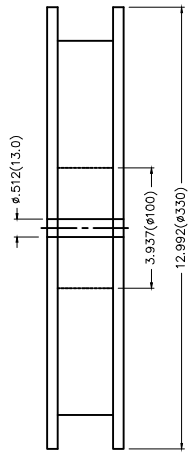
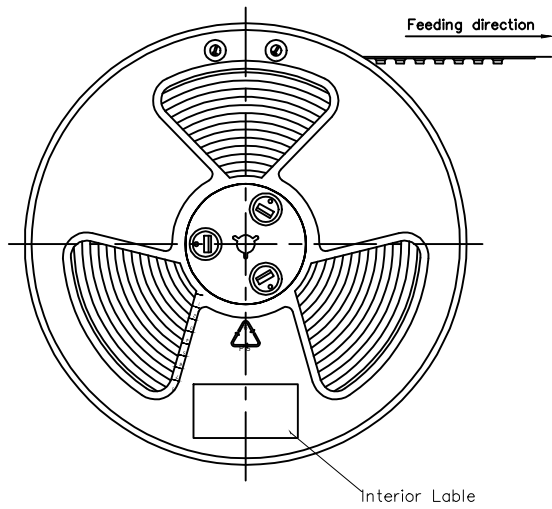
REV	LOCATIONS	DESCRIPTION	DATE	REVISER	APPD

Note:

1. 10 sprocket hole cumulative tolerance  $\pm 0.2$
2. Carrier camber is within 1.0mm in 100mm
3. Material: White Conductive polystyrene Alloy 100% recyclable
4. All dimensions meet EIA-481-3 requirements
5. Component load per 13" reel: 1,000pcs



Circuits (n)	Dimensions(in./mm)		Circuits (n)	Dimensions(in./mm)	
	D	W		D	W
2	.295(7.50)	.630(16.00)	8	.559(14.20)	1.260(32.00)
3	.295(7.50)	.630(16.00)	9	.559(14.20)	1.260(32.00)
4	.453(11.50)	.945(24.00)	10	.559(14.20)	1.260(32.00)
5	.453(11.50)	.945(24.00)	11	.795(20.20)	1.732(44.00)
6	.453(11.50)	.945(24.00)	12	.795(20.20)	1.732(44.00)
7	.559(14.20)	1.260(32.00)			



 THIRD ANGLE PROJECTION	GENERAL TOLERANCES (UNLESS SPECIFIED)		APPROVE BY	DATE	PART NO.	ITEM NO.	 Leader Of Industry
	X. $\pm 0.12(0.30)$	X. $\pm 5^{\circ}$	FRANK	01/JUL/13	FWF25021-SXXB24W5M	FWF25021	
DESIGN UNITS Inch (metric)	X.XX $\pm 0.008(0.20)$	X. $\pm 2^{\circ}$	CHECKED BY	DATE	TITLE		REV 0 SHEET NO. 2/2
SCALE	X.XX $\pm 0.006(0.15)$	.XX $\pm 1^{\circ}$	JACOB	01/JUL/13	Wire to Board (Wafer) Pitch 2.5mm 90° Angled (SMT)		
SIZE	X.XXX $\pm 0.004(0.10)$	.XXX $\pm 0.5^{\circ}$	DRAWN BY	DATE	THIS DRAWING CONTAINS INFORMATION THAT IS PROPRIETARY TO TXGA INDUSTRIAL ELECTRONICS(S.Z)CO.,LTD AND SHOULD NOT BE USED WITHOUT WRITTEN PERMISSION		
5:1	A4		CHERRY	01/JUL/13			