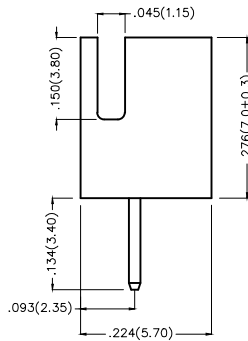
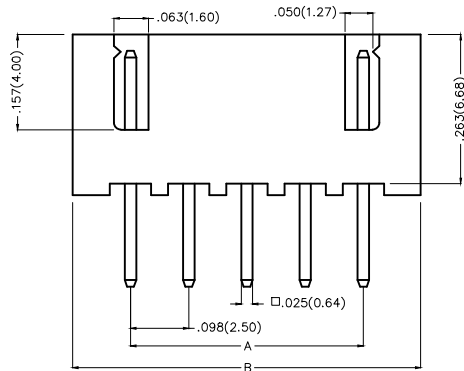


REV	LOCATIONS	DESCRIPTION	DATE	REVISOR	APPD

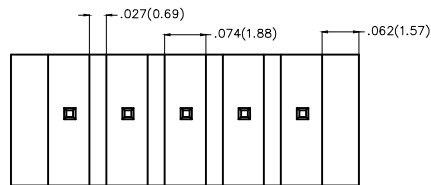


Electrical

Current Rating: 3.0A AC(rms)/DC
Voltage Rating: 250V AC(rms)/DC
Contact Resistance: 20 mΩ Max
Insulation Resistance: 1000 MΩ MIN
Withstanding Voltage: 1000V AC r.m.s
Temperature Range—Operating: -25°C~+85°C

Material and Plating

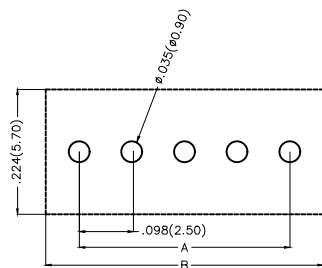
Housing: Glass Filled Polyester(UL 94V-2)
Contact Pin: Brass
Plating: Full gold/ Full tin




Ordering Information

FWF 250 18 — S XX S X X XX B
1 2 3 4 5 6 7 8 9 10

1 Category FWF—Wafer	2 Series Number 250—Pitch 2.50mm	3 Distinction No. 18	4 Row Option Single Row	5 Circuits XX	6 Entry Angle S—180° Vertical	
7 Plating 1—Gold Plated 2—Tin Plated	8 Material—Resin 2—PA66 4—PA6T	9 Color—Resin W1—White W5—White	10 Packaging B—PE Bag			





Recommended P.C.Board Layout

THIRD ANGLE PROJECTION	GENERAL TOLERANCES (UNLESS SPECIFIED)		APPROVE BY FRANK	DATE 01/JUL/13	PART NO. FWF25018—SXXSXXXXB	ITEM NO. FWF25018	 Leader Of Industry
	DESIGN UNITS Inch (metric)	X.±.012(0.30) X.±5° X.X±.008(0.20) .X'±2°	CHECKED BY JACOB	DATE 01/JUL/13	TITLE Wire to Board (Wafer) Pitch 2.50mm 180° Vertical (DIP)		
SCALE 5:1	SIZE A4	X.XX±.006(0.15) .XX'±1° X.XXX±.004(0.10) .XXX'±0.5°	DRAWN BY CHERRY	DATE 01/JUL/13	THIS DRAWING CONTAINS INFORMATION THAT IS PROPRIETARY TO TXGA INDUSTRIAL ELECTRONICS(S.Z)CO.,LTD AND SHOULD NOT BE USED WITHOUT WRITTEN PERMISSION		

REV	LOCATIONS	DESCRIPTION	DATE	REVISER	APPD

Material and Plating : Housing PA66 UL94V-2 , Tin-Plated.				Material and Plating : Housing PA66 UL94V-2 ,Gold-Plated.			
Circuits (n)	Part No.	Dimensions(in/mm)		Circuits (n)	Part No.	Dimensions(in/mm)	
		A	B			A	B
2	FWF25018-S02S22W1B	.098(2.50)	.295(7.50)	2	FWF25018-S02S12W1B	.098(2.50)	.295(7.50)
3	FWF25018-S03S22W1B	.197(5.00)	.394(10.00)	3	FWF25018-S03S12W1B	.197(5.00)	.394(10.00)
4	FWF25018-S04S22W1B	.295(7.50)	.492(12.50)	4	FWF25018-S04S12W1B	.295(7.50)	.492(12.50)
5	FWF25018-S05S22W1B	.394(10.00)	.591(15.00)	5	FWF25018-S05S12W1B	.394(10.00)	.591(15.00)
6	FWF25018-S06S22W1B	.492(12.50)	.689(17.50)	6	FWF25018-S06S12W1B	.492(12.50)	.689(17.50)
7	FWF25018-S07S22W1B	.591(15.00)	.787(20.00)	7	FWF25018-S07S12W1B	.591(15.00)	.787(20.00)
8	FWF25018-S08S22W1B	.689(17.50)	.886(22.50)	8	FWF25018-S08S12W1B	.689(17.50)	.886(22.50)
9	FWF25018-S09S22W1B	.787(20.00)	.984(25.00)	9	FWF25018-S09S12W1B	.787(20.00)	.984(25.00)
10	FWF25018-S10S22W1B	.886(22.50)	1.083(27.50)	10	FWF25018-S10S12W1B	.886(22.50)	1.083(27.50)
11	FWF25018-S11S22W1B	.984(25.00)	1.181(30.00)	11	FWF25018-S11S12W1B	.984(25.00)	1.181(30.00)
12	FWF25018-S12S22W1B	1.083(27.50)	1.024(32.50)	12	FWF25018-S12S12W1B	1.083(27.50)	1.024(32.50)
13	FWF25018-S13S22W1B	1.181(30.00)	1.378(35.00)	13	FWF25018-S13S12W1B	1.181(30.00)	1.378(35.00)
14	FWF25018-S14S22W1B	1.024(32.50)	1.476(37.50)	14	FWF25018-S14S12W1B	1.024(32.50)	1.476(37.50)
15	FWF25018-S15S22W1B	1.378(35.00)	1.575(40.00)	15	FWF25018-S15S12W1B	1.378(35.00)	1.575(40.00)
16	FWF25018-S16S22W1B	1.476(37.50)	1.673(42.50)	16	FWF25018-S16S12W1B	1.476(37.50)	1.673(42.50)

Material and Plating : Housing PA6T UL94V-0 , Tin-Plated.				Material and Plating : Housing PA6T UL94V-0 ,Gold-Plated.			
Circuits (n)	Part No.	Dimensions(in/mm)		Circuits (n)	Part No.	Dimensions(in/mm)	
		A	B			A	B
2	FWF25018-S02S24W5B	.098(2.50)	.295(7.50)	2	FWF25018-S02S14W5B	.098(2.50)	.295(7.50)
3	FWF25018-S03S24W5B	.197(5.00)	.394(10.00)	3	FWF25018-S03S14W5B	.197(5.00)	.394(10.00)
4	FWF25018-S04S24W5B	.295(7.50)	.492(12.50)	4	FWF25018-S04S14W5B	.295(7.50)	.492(12.50)
5	FWF25018-S05S24W5B	.394(10.00)	.591(15.00)	5	FWF25018-S05S14W5B	.394(10.00)	.591(15.00)
6	FWF25018-S06S24W5B	.492(12.50)	.689(17.50)	6	FWF25018-S06S14W5B	.492(12.50)	.689(17.50)
7	FWF25018-S07S24W5B	.591(15.00)	.787(20.00)	7	FWF25018-S07S14W5B	.591(15.00)	.787(20.00)
8	FWF25018-S08S24W5B	.689(17.50)	.886(22.50)	8	FWF25018-S08S14W5B	.689(17.50)	.886(22.50)
9	FWF25018-S09S24W5B	.787(20.00)	.984(25.00)	9	FWF25018-S09S14W5B	.787(20.00)	.984(25.00)
10	FWF25018-S10S24W5B	.886(22.50)	1.083(27.50)	10	FWF25018-S10S14W5B	.886(22.50)	1.083(27.50)
11	FWF25018-S11S24W5B	.984(25.00)	1.181(30.00)	11	FWF25018-S11S14W5B	.984(25.00)	1.181(30.00)
12	FWF25018-S12S24W5B	1.083(27.50)	1.024(32.50)	12	FWF25018-S12S14W5B	1.083(27.50)	1.024(32.50)
13	FWF25018-S13S24W5B	1.181(30.00)	1.378(35.00)	13	FWF25018-S13S14W5B	1.181(30.00)	1.378(35.00)
14	FWF25018-S14S24W5B	1.024(32.50)	1.476(37.50)	14	FWF25018-S14S14W5B	1.024(32.50)	1.476(37.50)
15	FWF25018-S15S24W5B	1.378(35.00)	1.575(40.00)	15	FWF25018-S15S14W5B	1.378(35.00)	1.575(40.00)
16	FWF25018-S16S24W5B	1.476(37.50)	1.673(42.50)	16	FWF25018-S16S14W5B	1.476(37.50)	1.673(42.50)

 THIRD ANGLE PROJECTION	GENERAL TOLERANCES (UNLESS SPECIFIED)		APPROVE BY	DATE	PART NO.	ITEM NO.	 Leader Of Industry	
	X.±.012(0.30)	X.±5'	FRANK	01/JUL/13				FWF25018-SXXSXXXXB
	DESIGN UNITS Inch (metric)	X.X±.008(0.20)	X.±2'	CHECKED BY	DATE	TITLE		
	SCALE 5:1	X.XX±.006(0.15)	.XX±1'	JACOB	01/JUL/13	Wire to Board (Wafer) Pitch 2.50mm 180° Vertical (DIP)		
	X.XXX±.004(0.10)	.XXX±0.5'	DRAWN BY	DATE	THIS DRAWING CONTAINS INFORMATION THAT IS PROPRIETARY TO TXGA INDUSTRIAL ELECTRONICS(S.Z)CO.,LTD AND SHOULD NOT BE USED WITHOUT WRITTEN PERMISSION		REV 0	SHEET NO. 2/2
			CHERRY	01/JUL/13				