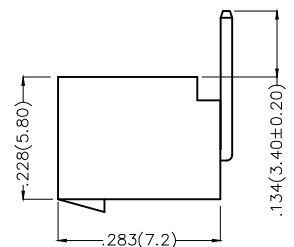
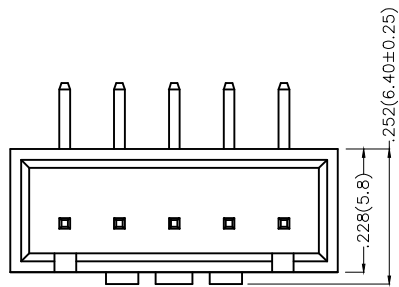
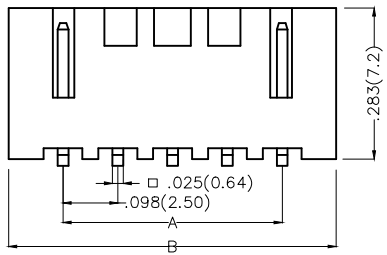


REV	LOCATIONS	DESCRIPTION	DATE	REVISER	APPD

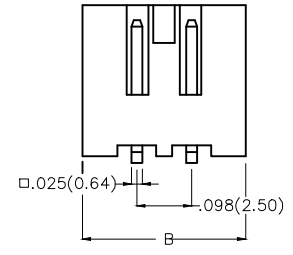


Electrical
 Current Rating: 3.0A AC(rms)/DC
 Voltage Rating: 250V AC(rms)/DC
 Contact Resistance: 20 mΩ Max
 Insulation Resistance: 1000 MΩ MIN
 Withstanding Voltage: 1000V AC r.m.s
 Temperature Range—Operating: -25°C~+85°C

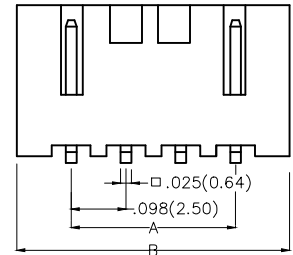
Material and Plating
 Housing: PA66(UL 94V-2)
 Contact Pin: Brass
 Plating: Tin Plated



5-13Circuits



2-3Circuits

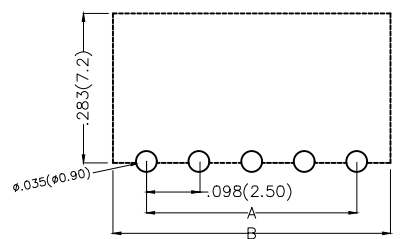


4Circuits


Ordering Information

FWF 250 13 — S XX B 2 2 W1 B
 1 2 3 4 5 6 7 8 9 10

1 Category FWF—Wafer	2 Series Number 250—Pitch 2.5mm	3 Distinction No. 13	4 Row Option S—Single Row	5 Circuits XX	6 Entry Angle B—90° Angle
7 Plating 2—Tin Plated	8 Material—Resin 2—PA66	9 Color—Resin W1—White	10 Packaging B—PE Bag		





Recommended P.C.Board Layout

THIRD ANGLE PROJECTION	GENERAL TOLERANCES (UNLESS SPECIFIED)		APPROVE BY FRANK	DATE 01/JUL/13	PART NO. FWF25013—SXXB22W1B	ITEM NO. FWF25013	 Leader Of Industry
	DESIGN UNITS Inch (metric)	X.X±.012(0.30) X'±5"	CHECKED BY JACOB	DATE 01/JUL/13	TITLE Wire to Board (Wafer) Pitch 2.5mm 90° Angl (DIP)		
SCALE 5:1	SIZE A4	X.XX±.006(0.15) .XX'±1"	DRAWN BY CHERRY	DATE 01/JUL/13	THIS DRAWING CONTAINS INFORMATION THAT IS PROPRIETARY TO TXGA INDUSTRIAL ELECTRONICS(S.Z)CO.,LTD AND SHOULD NOT BE USED WITHOUT WRITTEN PERMISSION		

REV	LOCATIONS	DESCRIPTION	DATE	REVISER	APPD

Circuits (n)	Part No.	Dimensions(in/mm)	
		A	B
2	FWF25013-S02B22W1B	.098(2.50)	.295(7.50)
3	FWF25013-S03B22W1B	.197(5.00)	.394(10.00)
4	FWF25013-S04B22W1B	.295(7.50)	.492(12.50)
5	FWF25013-S05B22W1B	.394(10.00)	.591(15.00)
6	FWF25013-S06B22W1B	.492(12.50)	.689(17.50)
7	FWF25013-S07B22W1B	.591(15.00)	.787(20.00)
8	FWF25013-S08B22W1B	.689(17.50)	.886(22.50)
9	FWF25013-S09B22W1B	.787(20.00)	.984(25.00)
10	FWF25013-S10B22W1B	.886(22.50)	1.083(27.50)
11	FWF25013-S11B22W1B	.984(25.00)	1.181(30.00)
12	FWF25013-S12B22W1B	1.083(27.50)	1.024(32.50)

 THIRD ANGLE PROJECTION	GENERAL TOLERANCES (UNLESS SPECIFIED)		APPROVE BY FRANK	DATE 01/JUL/13	PART NO. FWF25013-SXXB22W1B	ITEM NO. FWF25013	 Leader Of Industry	
	DESIGN UNITS Inch (metric)	X.±.012(0.30)	X.±5'	CHECKED BY JACOB	DATE 01/JUL/13	TITLE Wire to Board (Wafer) Pitch 2.5mm 90° Angiel (DIP)		REV 0
SCALE 5:1	SIZE A4	X.XX±.006(0.15)	.XX±1'	DRAWN BY CHERRY	DATE 01/JUL/13	THIS DRAWING CONTAINS INFORMATION THAT IS PROPRIETARY TO TXGA INDUSTRIAL ELECTRONICS(S.Z)CO.,LTD AND SHOULD NOT BE USED WITHOUT WRITTEN PERMISSION		