

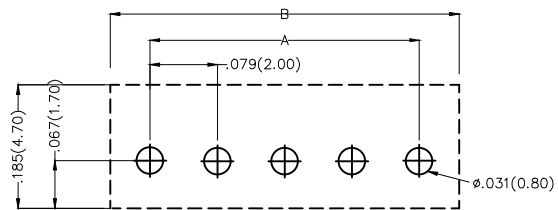
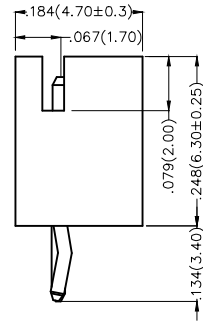
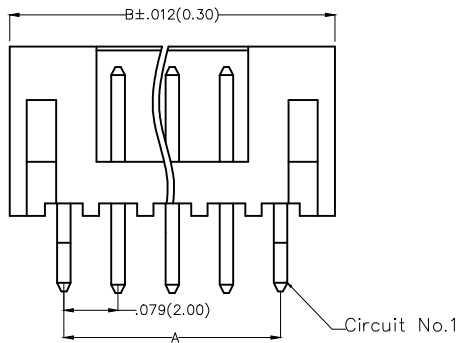
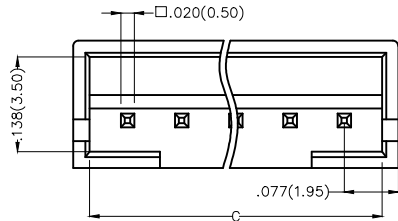
REV	LOCATIONS	DESCRIPTION	DATE	REVISER	APPD

Electrical

Current Rating: 2.0A AC(rms)/DC
Voltage Rating: 100V AC(rms)/DC
Contact Resistance: 10 mΩ Max
Insulation Resistance: 1000 MΩ MIN
Withstanding Voltage: 800V AC r.m.s
Temperature Range—Operating: -25°C ~ +85°C

Material and Plating

Housing: PA66(UL 94V-2)
Contact Pin: Brass
Plating: Tin Plated



Recommended P.C.Board Layout

Ordering Information



FWF 200 01 — S XX S 2 2 W1 B
1 2 3 4 5 6 7 8 9 10

1 Category FWF—Wafer	2 Series Number 200—Pitch 2.0mm	3 Distinction No. 01	4 Row Option S—Single Row	5 Circuits XX	6 Entry Angle S—180° Vertical
7 Plating 2—Tin Plated	8 Material—Resin 2—PA66	9 Color—Resin W1—White	10 Packaging B—PE Bag		

 THIRD ANGLE PROJECTION	GENERAL TOLERANCES (UNLESS SPECIFIED)		APPROVE BY FRANK	DATE 18/JUN/13	PART NO. FWF20001—SXXS22W1B	ITEM NO. FWF20001	 Leader Of Industry
	DESIGN UNITS Inch (metric)	X.±.012(0.30) X.±5°	CHECKED BY JACOB	DATE 18/JUN/13	TITLE Wire to Board (Wafer) Pitch 2.0mm 180° Vertical (DIP)		
SCALE 5:1	SIZE A4	X.XX±.006(0.15) .XX±1°	DRAWN BY CHERRY	DATE 18/JUN/13	THIS DRAWING CONTAINS INFORMATION THAT IS PROPRIETARY TO TXGA INDUSTRIAL ELECTRONICS(S.Z)CO.,LTD AND SHOULD NOT BE USED WITHOUT WRITTEN PERMISSION		
		X.XXX±.004(0.10) .XXX±0.5°					

REV	LOCATIONS	DESCRIPTION	DATE	REVISER	APPD

Circuits (n)	Part No.	Dimensions(in/mm)		
		A	B	C
2	FWF20001-S02S22W1B	.079(2.00)	.232(5.90)	.197(5.00)
3	FWF20001-S03S22W1B	.157(4.00)	.311(7.90)	.157(7.00)
4	FWF20001-S04S22W1B	.236(6.00)	.390(9.90)	.354(9.00)
5	FWF20001-S05S22W1B	.315(8.00)	.469(11.90)	.433(11.00)
6	FWF20001-S06S22W1B	.394(10.00)	.547(13.90)	.512(13.00)
7	FWF20001-S07S22W1B	.472(12.00)	.626(15.90)	.591(15.00)
8	FWF20001-S08S22W1B	.551(14.00)	.705(17.90)	.670(17.00)
9	FWF20001-S09S22W1B	.630(16.00)	.783(19.90)	.748(19.00)
10	FWF20001-S10S22W1B	.709(18.00)	.862(21.90)	.827(21.00)
11	FWF20001-S11S22W1B	.787(20.00)	.941(23.90)	.906(23.00)
12	FWF20001-S12S22W1B	.866(22.00)	1.020(25.90)	.984(25.00)
13	FWF20001-S13S22W1B	.945(24.00)	1.098(27.90)	1.063(27.00)
14	FWF20001-S14S22W1B	1.024(26.00)	1.177(29.90)	1.142(29.00)
15	FWF20001-S15S22W1B	1.102(28.00)	1.256(31.90)	1.220(31.00)
16	FWF20001-S16S22W1B	1.181(30.00)	1.335(33.90)	1.299(33.00)

 THIRD ANGLE PROJECTION	GENERAL TOLERANCES (UNLESS SPECIFIED)		APPROVE BY FRANK	DATE 18/JUN/13	PART NO. FWF20001-SXXS22W1B	ITEM NO. FWF20001	 Leader Of Industry
	X.±.012(0.30)	X.±5'	CHECKED BY JACOB	DATE 18/JUN/13	TITLE Wire to Board (Wafer) Pitch 2.0mm 180° Vertical (DIP)		
DESIGN UNITS Inch (metric)	X.XX±.008(0.20)	.X±2'	DRAWN BY CHERRY	DATE 18/JUN/13	THIS DRAWING CONTAINS INFORMATION THAT IS PROPRIETARY TO TXGA INDUSTRIAL ELECTRONICS(S.Z)CO.,LTD AND SHOULD NOT BE USED WITHOUT WRITTEN PERMISSION		
SCALE 5:1	SIZE A4	X.XX±.006(0.15)					
		X.XXX±.004(0.10)					