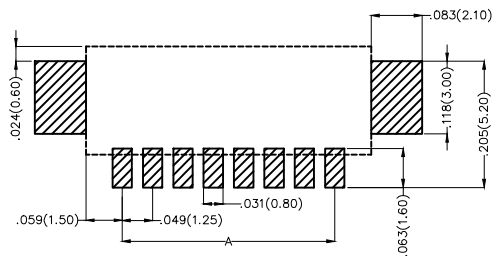
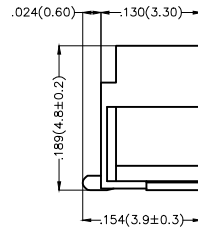
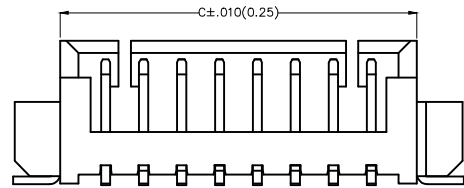
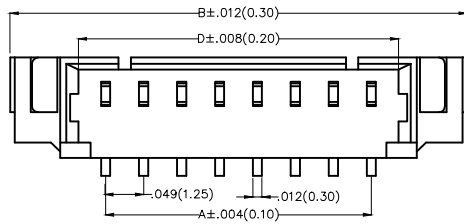


REV	LOCATIONS	DESCRIPTION	DATE	REVISER	APPD

Electrical

Current Rating: 1.0A AC(rms)/DC
Voltage Rating: 125V AC(rms)/DC
Contact Resistance: 20 mΩ Max
Insulation Resistance: 100 MΩ MIN
Withstanding Voltage: 250V AC r.m.s
Temperature Range—Operating: -25°C~+85°C
Material and Plating
Housing: PA9T(UL 94V-0)
Contact Pin: Brass
Plating: Full tin



Recommended P.C.Board Layout

Ordering Information



FWF 125 05 — S XX S X 4 W5 M
1 2 3 4 5 6 7 8 9 10

1	Category FWF—Wafer	2	Series Number 125—Pitch 1.25mm	3	Distinction No. 05	4	Row Option S—Single Row	5	Circuits XX	6	Entry Angle S—180° Vertical
7	Plating 2—Tin Plated	8	Material—Resin 4—PA9T	9	Color—Resin W5—Natural	10	Packaging M—Reel				

 THIRD ANGLE PROJECTION	GENERAL TOLERANCES (UNLESS SPECIFIED)		APPROVE BY FRANK	DATE 8/JUL/13	PART NO. FWF12505-SXXSX4W5M	ITEM NO. FWF12505	 Leader Of Industry	
	DESIGN UNITS Inch (metric)	X.X±.012(0.30) X.X±.008(0.20)	X.±5° .X±2°	CHECKED BY JACOB	DATE 8/JUL/13	TITLE Wire to Board (Wafer) Pitch 1.25mm 180° Vertical (SMT)		REV 1
SCALE 5:1	SIZE A4	X.XX±.006(0.15) X.XXX±.004(0.10)	.XX±1° .XXX±0.5°	DRAWN BY CHERRY	DATE 8/JUL/13	THIS DRAWING CONTAINS INFORMATION THAT IS PROPRIETARY TO TXGA INDUSTRIAL ELECTRONICS(S.Z.)CO.,LTD AND SHOULD NOT BE USED WITHOUT WRITTEN PERMISSION		

REV	LOCATIONS	DESCRIPTION	DATE	REVISER	APPD

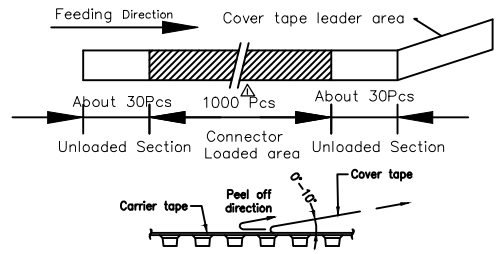
Circuits (n)	Part No.	Dimensions(in/mm)			
		A	B	C	D
2	FWF12505-S02S24W5M	.049(1.25)	.297(7.55)	.167(4.25)	.120(3.05)
3	FWF12505-S03S24W5M	.098(2.50)	.346(8.80)	.217(5.50)	.169(4.30)
4	FWF12505-S04S24W5M	.147(3.75)	.396(10.05)	.266(6.75)	.218(5.55)
5	FWF12505-S05S24W5M	.197(5.00)	.445(11.30)	.315(8.00)	.268(6.80)
6	FWF12505-S06S24W5M	.246(6.25)	.494(12.55)	.364(9.25)	.317(8.05)
7	FWF12505-S07S24W5M	.295(7.50)	.543(13.80)	.413(10.50)	.366(9.30)
8	FWF12505-S08S24W5M	.344(8.75)	.593(15.05)	.463(11.75)	.415(10.55)
9	FWF12505-S09S24W5M	.394(10.00)	.642(16.30)	.512(13.00)	.465(11.80)
10	FWF12505-S10S24W5M	.443(11.25)	.691(17.55)	.561(14.25)	.514(13.05)
11	FWF12505-S11S24W5M	.492(12.50)	.740(18.80)	.610(15.50)	.563(14.30)
12	FWF12505-S12S24W5M	.541(13.75)	.789(20.05)	.659(16.75)	.612(15.55)
13	FWF12505-S13S24W5M	.591(15.00)	.839(21.30)	.709(18.00)	.661(16.80)
14	FWF12505-S14S24W5M	.640(16.25)	.888(22.55)	.758(19.25)	.711(18.05)
15	FWF12505-S15S24W5M	.689(17.50)	.937(23.80)	.807(20.50)	.760(19.30)

 THIRD ANGLE PROJECTION	GENERAL TOLERANCES (UNLESS SPECIFIED)		APPROVE BY	DATE	PART NO.	ITEM NO.	 Leader Of Industry
	X.±.012(0.30)	X.±5'	FRANK	8/JUL/13	FWF12505-SXXSX4W5M	FWF12505	
DESIGN UNITS Inch (metric)	X.X±.008(0.20)	.X'±2'	CHECKED BY	DATE	TITLE		REV 1 SHEET NO. 2/3
SCALE	X.XX±.006(0.15)	.XX'±1'	JACOB	8/JUL/13	Wire to Board (Wafer) Pitch 1.25mm 180° Vertical (SMT)		
5:1	X.XXX±.004(0.10)	.XXX'±0.5'	DRAWN BY	DATE	THIS DRAWING CONTAINS INFORMATION THAT IS PROPRIETARY TO TXGA INDUSTRIAL ELECTRONICS(S.Z)CO.,LTD AND SHOULD NOT BE USED WITHOUT WRITTEN PERMISSION		
A4			CHERRY	8/JUL/13			

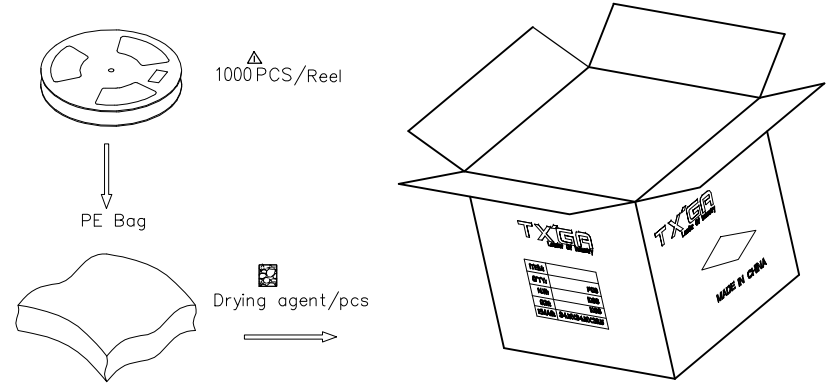
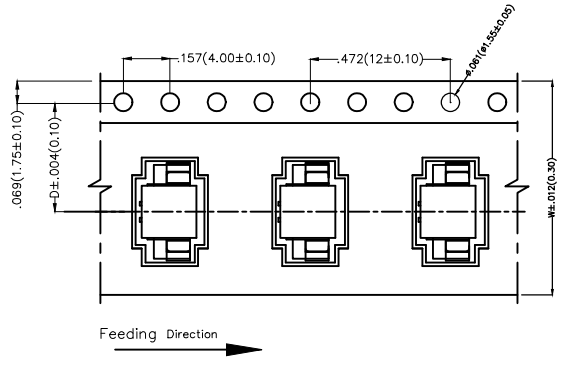
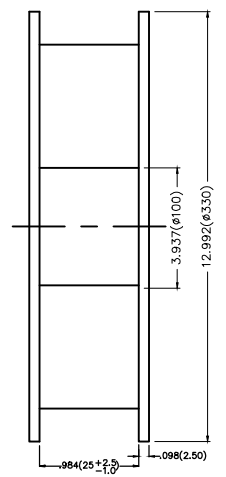
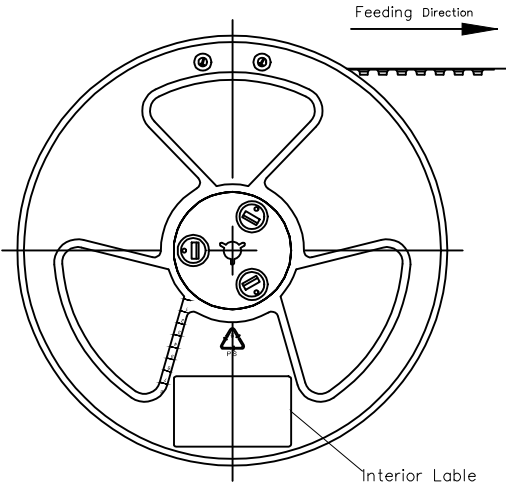
REV	LOCATIONS	DESCRIPTION	DATE	REVISER	APPD
1	△	MPQ 1500PCS/Reel Change to 1000PCS/Reel	20150811	CHERRY	JACOB

Note:

- 10 sprocket hole cumulative tolerance±0.2
- Carrier camber is within 1.0mm in 100mm
- Material: White Conductive polystyrene Alloy 100% recyclable
- All dimensions meet EIA-481-3 requirements
- Component load per 13" reel: 1000 pcs



Circuits (n)	Dimensions(in/mm)		Circuits (n)	Dimensions(in/mm)	
	D	W		D	W
2	.295(7.50)	.630(16.00)	10	.559(14.20)	1.260(32.00)
3	.295(7.50)	.630(16.00)	11	.559(14.20)	1.260(32.00)
4	.453(11.50)	.945(24.00)	12	.559(14.20)	1.260(32.00)
5	.453(11.50)	.945(24.00)	13	.795(20.20)	1.732(44.00)
6	.453(11.50)	.945(24.00)	14	.795(20.20)	1.732(44.00)
7	.559(14.20)	1.260(32.00)	15	.795(20.20)	1.732(44.00)
8	.559(14.20)	1.260(32.00)			
9	.559(14.20)	1.260(32.00)			



 THIRD ANGLE PROJECTION	GENERAL TOLERANCES (UNLESS SPECIFIED)		APPROVE BY	DATE	PART NO.	ITEM NO.	 Leader Of Industry
	X.±.012(0.30)	X.±5'	FRANK	8/JUL/13	FWF12505-SXXSX4W5M	FWF12505	
DESIGN UNITS Inch (metric)	X.XX±.008(0.20)	.X'±2'	CHECKED BY	DATE	TITLE		REV 1 SHEET NO. 3/3
SCALE	X.XX±.006(0.15)	.XX'±1'	JACOB	8/JUL/13	Wire to Board (Wafer) Pitch 1.25mm 180° Vertical (SMT)		
SIZE	X.XXX±.004(0.10)	.XXX'±0.5'	DRAWN BY	DATE	THIS DRAWING CONTAINS INFORMATION THAT IS PROPRIETARY TO TXGA INDUSTRIAL ELECTRONICS(S.Z)CO.,LTD AND SHOULD NOT BE USED WITHOUT WRITTEN PERMISSION		
5:1			CHERRY	8/JUL/13			