

REV	LOCATIONS	DESCRIPTION	DATE	REVISER	APPD

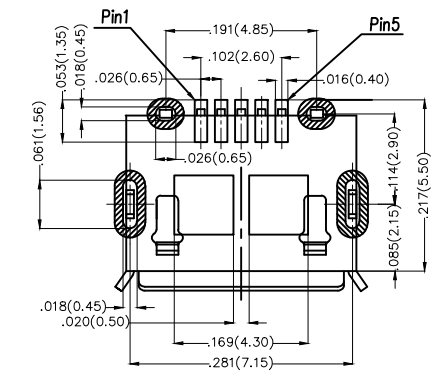
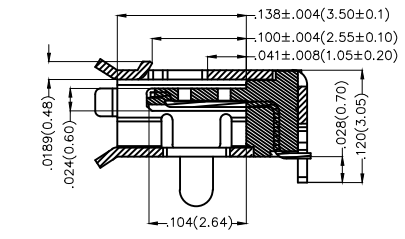
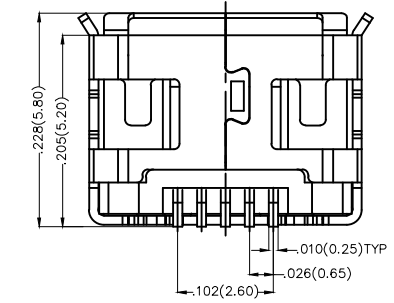
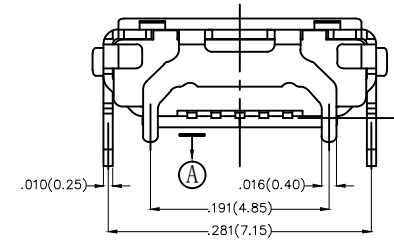
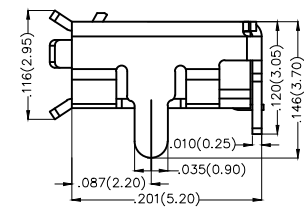
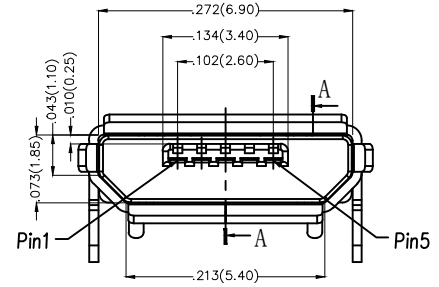
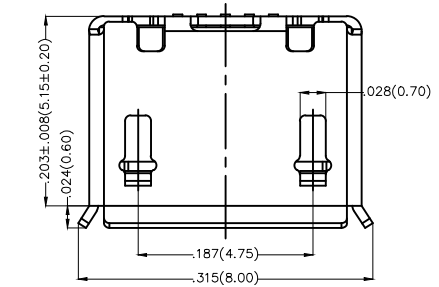
SPECIFICATIONS

Electrical

Current Rating: 1A AC(rms)/DC
 Contact Resistance: 50 mΩ Max
 Insulation Resistance: 100 MΩ MIN
 Withstanding Voltage: 100V AC r.m.s
 Temperature Range-Operating: -30°C ~ +80°C

Material and Plating

Housing: Glass Filled Polyester(UL 94V-0)
 Contact: Phosphor Bronze/ Gold plated
 Shell: Copper Alloy /Tin Plated



Recommended P.C.Board Layout

Pinassignment:

Pins	1	2	3	4	5
Signal name	VBUS	D-	D+	ID	GND

 THIRD ANGLE PROJECTION	GENERAL TOLERANCES (UNLESS SPECIFIED)		APPROVE BY	DATE	PART NO.	ITEM NO.	 Leader Of Industry	
	X.±.012(0.30)	X.'±5'	FRANK	15/JUL/13	FUS417-FSBK6M	FUS417		
	DESIGN UNITS Inch (metric)	X.X±.008(0.20)	X.'±2'	CHECKED BY	DATE	TITLE		REV 0 SHEET NO. 1/1
	SCALE	X.XX±.006(0.15)	.XX±1'	CHERRY	15/JUL/13	Micro USB 5Circuits 90°Angle Female(SMT)		
SIZE	X.XXX±.004(0.10)	.XXX±0.5'	DRAWN BY	DATE	THIS DRAWING CONTAINS INFORMATION THAT IS PROPRIETARY TO TXGA INDUSTRIAL ELECTRONICS(S.Z)CO.,LTD AND SHOULD NOT BE USED WITHOUT WRITTEN PERMISSION			
5:1	A4		JACOB	15/JUL/13				