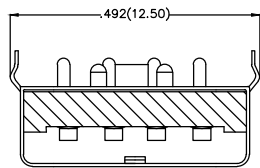
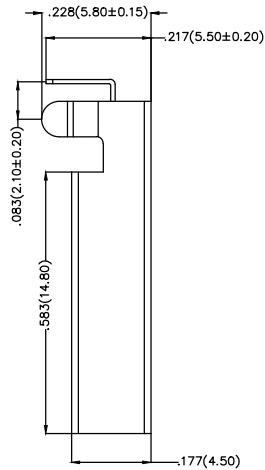
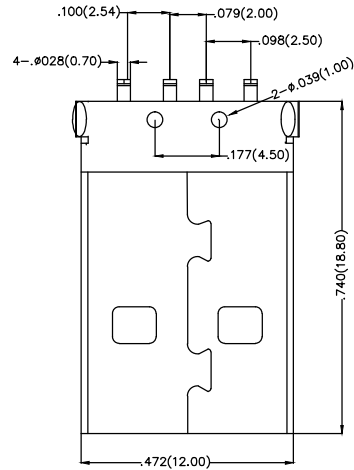


REV	LOCATIONS	DESCRIPTION	DATE	REVISER	APPD

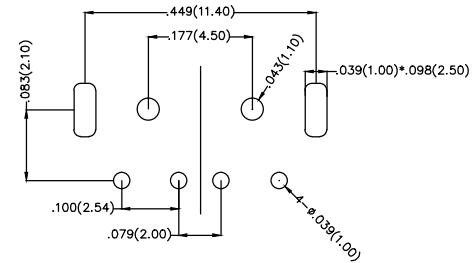


Electrical

Current Rating: 1A AC(rms)/DC
Voltage Rating: 30V AC(rms)/DC
Contact Resistance: 30 m Ω Max
Insulation Resistance: 500 M Ω MIN
Withstanding Voltage: 500V AC r.m.s
Temperature Range—Operating: -40°C ~ +85°C

Material and Plating

Housing: PA66(UL 94V-0)
Contact Pin: Phosphor Bronze
Plating: Selective gold in contact area, Tin on tail.



Recommended P.C.Board Layout

 THIRD ANGLE PROJECTION	GENERAL TOLERANCES (UNLESS SPECIFIED)		APPROVE BY FRANK	DATE 17JUL/13	PART NO. FUS215-MDBK6K	ITEM NO. FUS215	 Leader Of Industry	
	DESIGN UNITS Inch (metric)	X.±.012(0.30) X.X±.008(0.20) X.XX±.006(0.15) X.XXX±.004(0.10)	X.±5' .X'±2' .XX'±1' .XXX'±0.5'	CHECKED BY CHERRY	DATE 17/JUL/13	TITLE USB A-type 4Circuits 90°Angle Male(DIP)		REV 0
SCALE 5:1	SIZE A4		DRAWN BY JACOB	DATE 17/JUL/13	THIS DRAWING CONTAINS INFORMATION THAT IS PROPRIETARY TO TXGA INDUSTRIAL ELECTRONICS(S.Z)CO.,LTD AND SHOULD NOT BE USED WITHOUT WRITTEN PERMISSION			