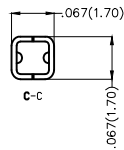
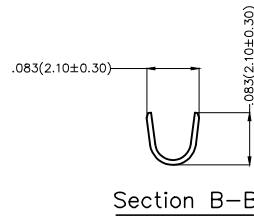
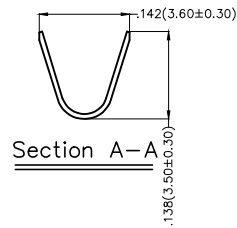
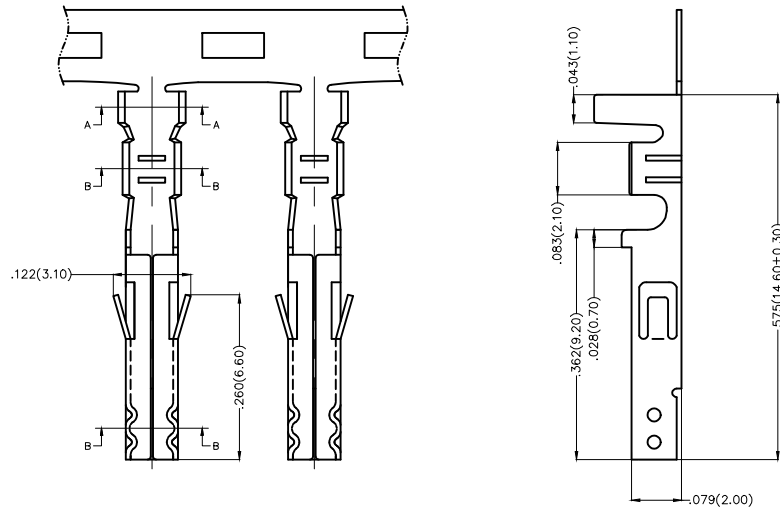


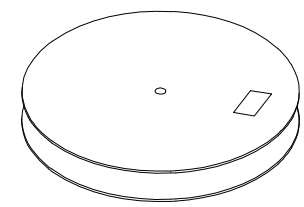
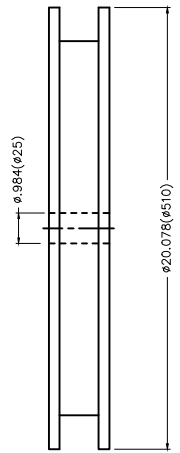
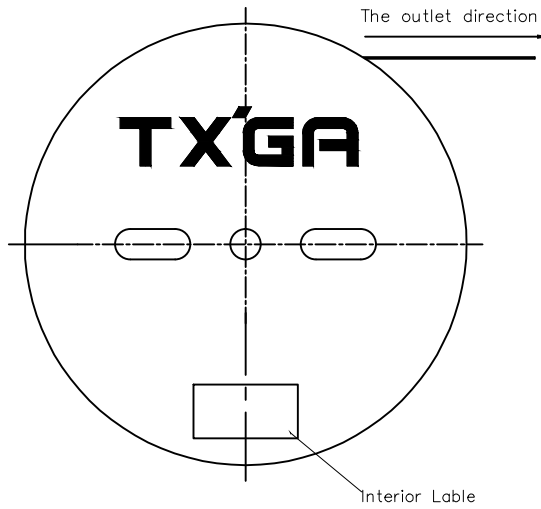
| REV | LOCATIONS | DESCRIPTION | DATE | REVISER | APPD |
|-----|-----------|-------------|------|---------|------|
| | | | | | |

Electrical
Material: Phosphor Bronze
Plating: Tin-Plated
Wire Range: 28AWG~16AWG
Applicable Housing: FHG42001Series
Minimum Order Quantity : 6,500 PCS

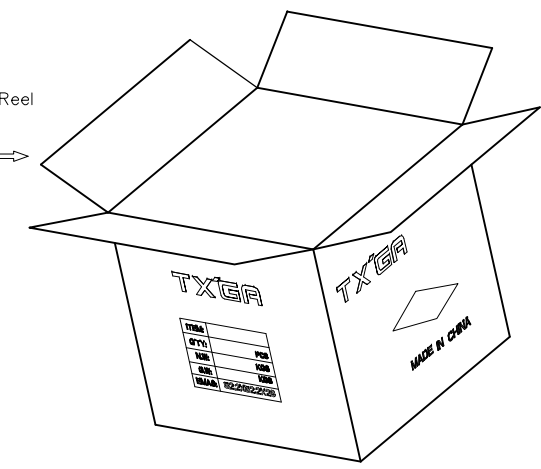


| | | | | | | | | |
|-------------------------------|--|--|---------------------------------------|---------------------|--|---|------------------------|-------|
| THIRD ANGLE PROJECTION | GENERAL TOLERANCES (UNLESS SPECIFIED) | | APPROVE BY FRANK | DATE 25/JUN/13 | PART NO. FT42001-F2H | ITEM NO. FT42001 | Leader Of Industry | |
| | DESIGN UNITS Inch (metric) | X.±.012(0.30) X.X±.008(0.20) X.XX±.006(0.15) X.XXX±.004(0.10) | X.±5' .X±2' .XX±1' .XXX±0.5' | CHECKED BY JACOB | DATE 25/JUN/13 | TITLE Wire to Board Pitch 4.2mm(Terminal) | | REV 0 |
| SCALE 5:1 | SIZE A4 | | DRAWN BY CHERRY | DATE 25/JUN/13 | THIS DRAWING CONTAINS INFORMATION THAT IS PROPRIETARY TO TXGA INDUSTRIAL ELECTRONICS(S.Z)CO.,LTD AND SHOULD NOT BE USED WITHOUT WRITTEN PERMISSION | | | |

| REV | LOCATIONS | DESCRIPTION | DATE | REVISER | APPD |
|-----|-----------|-------------|------|---------|------|
| | | | | | |



6,500Pcs/Reel



| | | | | | | | |
|----------------------------|---------------------------------------|------------------------|-----------------|-----------|--|--|------------------------|
| THIRD ANGLE PROJECTION | GENERAL TOLERANCES (UNLESS SPECIFIED) | | APPROVE BY | DATE | PART NO. | ITEM NO. | Leader Of Industry |
| | X. \pm .012(0.30) | X. \pm 5' | FRANK | 25/JUN/13 | FT42001-F2H | FT42001 | |
| | X.X \pm .008(0.20) | .X \pm 2' | CHECKED BY | DATE | TITLE | | REV 0 |
| | X.XX \pm .006(0.15) | .XX \pm 1' | JACOB | 25/JUN/13 | Wire to Board Pitch 4.2mm(Terminal) | | SHEET NO. 2/2 |
| SCALE | SIZE | X.XXX \pm .004(0.10) | .XXX \pm 0.5' | DRAWN BY | DATE | THIS DRAWING CONTAINS INFORMATION THAT IS PROPRIETARY TO TXGA INDUSTRIAL ELECTRONICS(S.Z)CO.,LTD AND SHOULD NOT BE USED WITHOUT WRITTEN PERMISSION | |
| 5:1 | A4 | | | CHERRY | 25/JUN/13 | | |