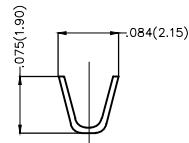
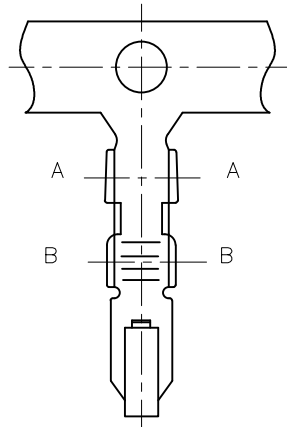


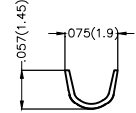
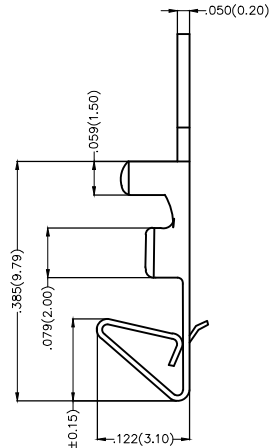
REV	LOCATIONS	DESCRIPTION	DATE	REVISER	APPD
1	△	SIZE CHANGE	20160606	CHERRY	JACK

Notes:

- 1.Material: Phosphor Bronze C5191
- 2.Plating: Tin-Plated
- 3.Wire Range: 28AWG~22AWG
- 4.Insulation Nom.Dia:  $\phi 0.059'$  ( $\phi 1.5\text{mm Max}$ )
- 5.Applicable Housing: FHG25401Series
- 6.Minimum Order Quantity : 12,000 PCS



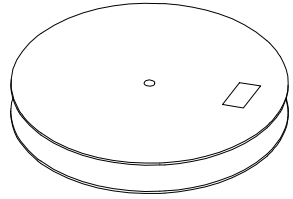
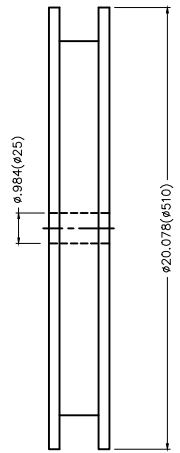
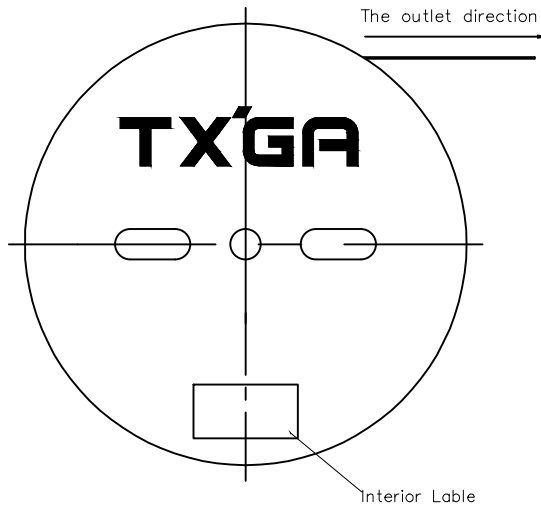
Section A-A



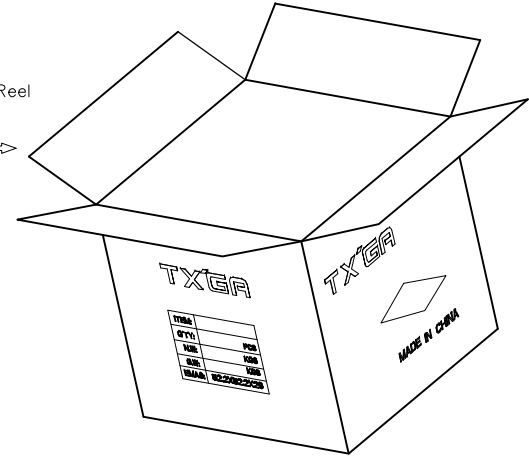
Section B-B

 THIRD ANGLE PROJECTION	GENERAL TOLERANCES (UNLESS SPECIFIED)		APPROVE BY FRANK	DATE 5/JUN/16	PART NO. FT25401-F2H	ITEM NO. FT25401	 Leader Of Industry	
	DESIGN UNITS Inch (metric)	X.±.012(0.30)	X.±5'	CHECKED BY JACOB	DATE 5/JUN/16	TITLE Wire to Board Pitch 2.54mm(Terminal)		REV 1
SCALE 5:1	SIZE A4	X.XX±.006(0.15)	.XX±1'	DRAWN BY CHERRY	DATE 5/JUN/16	THIS DRAWING CONTAINS INFORMATION THAT IS PROPRIETARY TO TXGA INDUSTRIAL ELECTRONICS(S.Z)CO.,LTD AND SHOULD NOT BE USED WITHOUT WRITTEN PERMISSION		
		X.XXX±.004(0.10)	.XXX±0.5'					

REV	LOCATIONS	DESCRIPTION	DATE	REVISER	APPD



12,000Pcs/Reel



 THIRD ANGLE PROJECTION	GENERAL TOLERANCES (UNLESS SPECIFIED)		APPROVE BY FRANK	DATE 5/JUN/16	PART NO. FT25401-F2H	ITEM NO. FT25401	 Leader Of Industry	
	DESIGN UNITS Inch (metric)	X. $\pm$ .012(0.30)	X. $\pm$ 5'	CHECKED BY JACOB	DATE 5/JUN/16	TITLE Wire to Board Pitch 2.54mm(Terminal)		REV 1
SCALE 5:1	SIZE A4	X.XX $\pm$ .006(0.15)	.XX $\pm$ 1'	DRAWN BY CHERRY	DATE 5/JUN/16	THIS DRAWING CONTAINS INFORMATION THAT IS PROPRIETARY TO TXGA INDUSTRIAL ELECTRONICS(S.Z)CO.,LTD AND SHOULD NOT BE USED WITHOUT WRITTEN PERMISSION		
		X.XXX $\pm$ .004(0.10)	.XXX $\pm$ 0.5'					