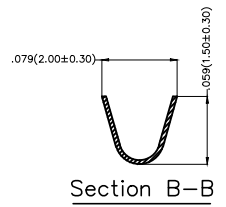
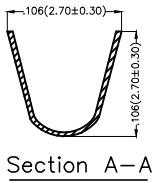
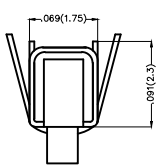
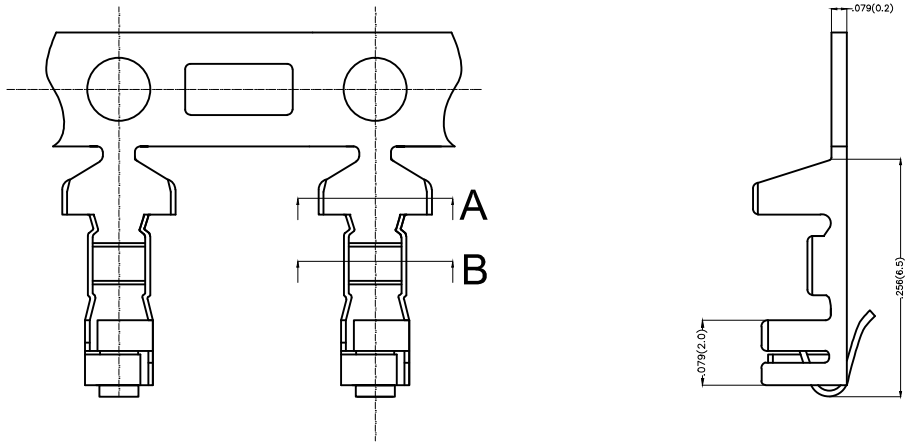


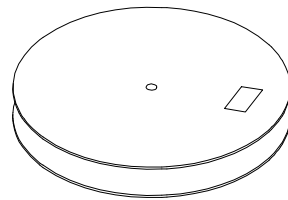
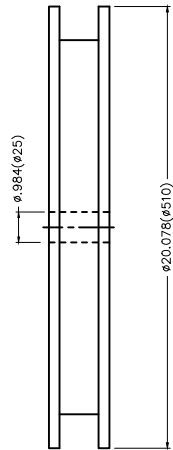
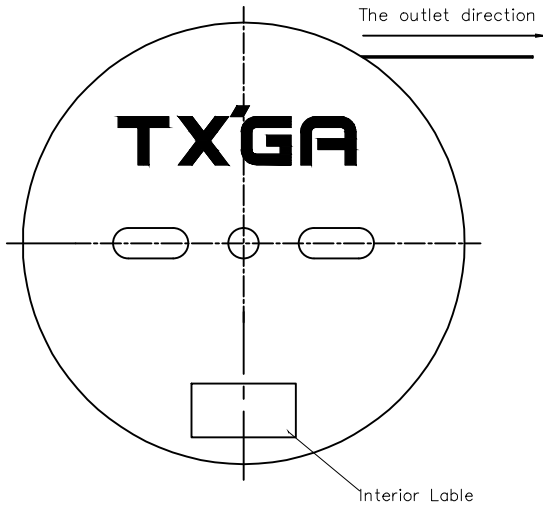
REV	LOCATIONS	DESCRIPTION	DATE	REVISER	APPD

Electrical
 Material: Phosphor Bronze
 Plating: Tin-Plated
 Wire Range: 30AWG~22AWG
 Applicable Housing: FHG25001Series

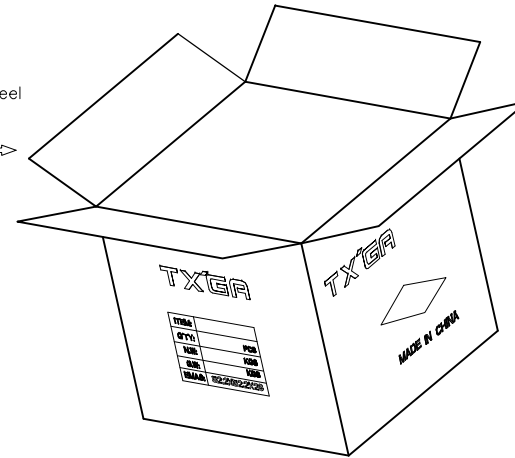


 THIRD ANGLE PROJECTION	GENERAL TOLERANCES (UNLESS SPECIFIED)		APPROVE BY FRANK	DATE 25/JUN/13	PART NO. FT25001-F2H	ITEM NO. FT25001	 Leader Of Industry
	DESIGN UNITS Inch (metric)	X.X±.012(0.30) X.±5'	X.X±.008(0.20) .X'±2'	CHECKED BY JACOB	DATE 25/JUN/13	TITLE Wire to Board Pitch 2.5 mm(Terminal)	
SCALE 5:1	SIZE A4	X.XX±.006(0.15) .XX'±1'	DRAWN BY CHERRY	DATE 25/JUN/13	THIS DRAWING CONTAINS INFORMATION THAT IS PROPRIETARY TO TXGA INDUSTRIAL ELECTRONICS(S.Z)CO.,LTD AND SHOULD NOT BE USED WITHOUT WRITTEN PERMISSION		

REV	LOCATIONS	DESCRIPTION	DATE	REVISER	APPD



8,500Pcs/Reel



 THIRD ANGLE PROJECTION	GENERAL TOLERANCES (UNLESS SPECIFIED)		APPROVE BY FRANK	DATE 25/JUN/13	PART NO. FT25001-F2H	ITEM NO. FT25001	 Leader Of Industry	
	DESIGN UNITS Inch (metric)	X. \pm .012(0.30)	X. \pm 5'	CHECKED BY JACOB	DATE 25/JUN/13	TITLE Wire to Board Pitch 2.50mm(Terminal)		REV 0
SCALE 5:1	SIZE A4	X.XX \pm .006(0.15)	.XX \pm 1'	DRAWN BY CHERRY	DATE 25/JUN/13	THIS DRAWING CONTAINS INFORMATION THAT IS PROPRIETARY TO TXGA INDUSTRIAL ELECTRONICS(S.Z)CO.,LTD AND SHOULD NOT BE USED WITHOUT WRITTEN PERMISSION		
		X.XXX \pm .004(0.10)	.XXX \pm 0.5'					