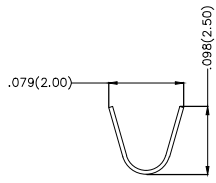
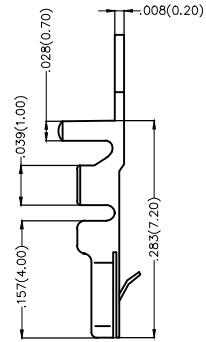
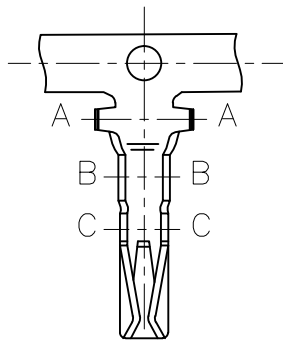


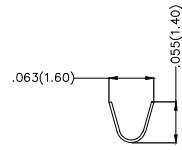
REV	LOCATIONS	DESCRIPTION	DATE	REVISER	APPD
1	△	MPQ Change from 10000 to 13000Pcs/Reel	20160506	Cherry	Jone

Notes:

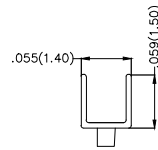
1. Material: Phosphor Bronze C5191
2. Plating: Tin-Plated
3. Wire Range: 28AWG~22AWG
4. Insulation Nom. Dia: $\phi 0.35'' (\phi 0.9mm) \sim \phi 0.059'' (\phi 1.5mm)$
5. Applicable Housing: FHG20007Series
6. Minimum Order Quantity : 13,000 PCS



Section A-A



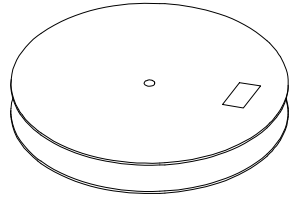
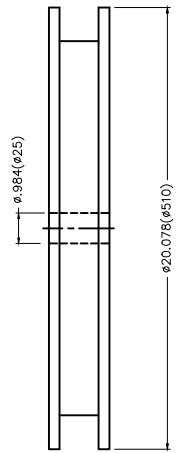
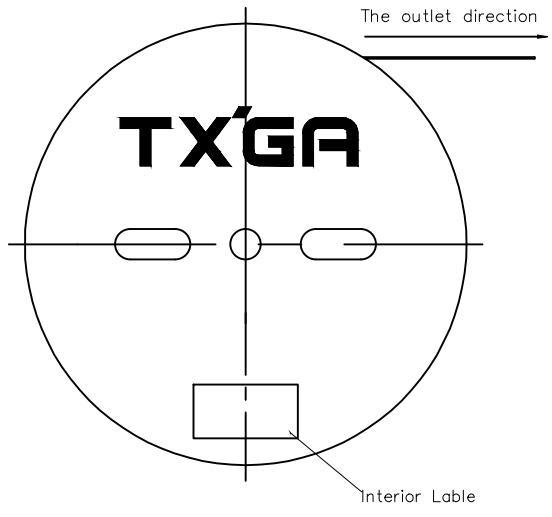
Section B-B



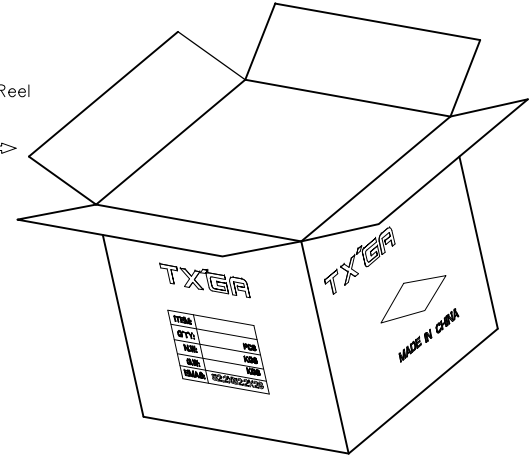
Section C-C

 THIRD ANGLE PROJECTION	GENERAL TOLERANCES (UNLESS SPECIFIED)		APPROVE BY FRANK	DATE 25/JUN/13	PART NO. FT20006-F2H	ITEM NO. FT20006	 Leader Of Industry	
	DESIGN UNITS Inch (metric)	X.±.012(0.30)	X.±5'	CHECKED BY JACOB	DATE 25/JUN/13	TITLE Wire to Board Pitch 2.0mm(Terminal)		REV 1
SCALE 5:1	SIZE A4	X.XX±.006(0.15)	.XX±1'	DRAWN BY CHERRY	DATE 25/JUN/13	THIS DRAWING CONTAINS INFORMATION THAT IS PROPRIETARY TO TXGA INDUSTRIAL ELECTRONICS(S.Z)CO.,LTD AND SHOULD NOT BE USED WITHOUT WRITTEN PERMISSION		

REV	LOCATIONS	DESCRIPTION	DATE	REVISER	APPD
1	△	MPQ Change from 10000 to 13000Pcs/Reel	20160506	Cherry	Jone



13,000Pcs/Reel
△



 THIRD ANGLE PROJECTION	GENERAL TOLERANCES (UNLESS SPECIFIED)		APPROVE BY	DATE	PART NO.	ITEM NO.	 Leader Of Industry
	X.±.012(0.30)	X.±5'	FRANK	25/JUN/13	FT20006-F2H	FT20006	
DESIGN UNITS Inch (metric)	X.X±.008(0.20)	.X'±2'	CHECKED BY	DATE	TITLE		REV 1 SHEET NO. 2/2
SCALE	X.XX±.006(0.15)	.XX'±1'	JACOB	25/JUN/13	Wire to Board Pitch 2.0mm(Terminal)		
SIZE	X.XXX±.004(0.10)	.XXX'±0.5'	DRAWN BY	DATE	THIS DRAWING CONTAINS INFORMATION THAT IS PROPRIETARY TO TXGA INDUSTRIAL ELECTRONICS(S.Z)CO.,LTD AND SHOULD NOT BE USED WITHOUT WRITTEN PERMISSION		
5:1	A4		CHERRY	25/JUN/13			