

REV	LOCATIONS	DESCRIPTION	DATE	REVISER	APPD
1	△	Tolerances changes	22/AUG/17	KATE	FRANK

Electrical

Material: Phosphor Bronze C5191

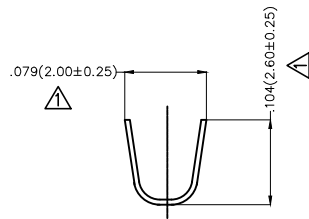
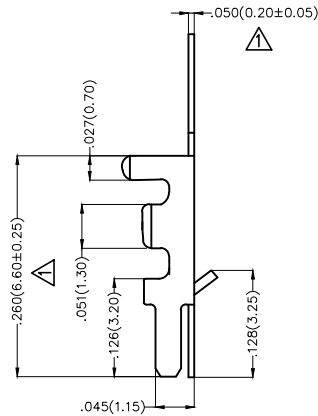
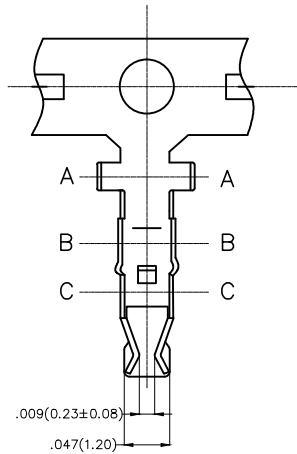
Plating: Tin-Plated

Wire Range: 28AWG~22AWG

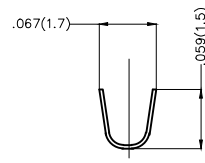
Insulation Nom. Dia: ϕ .035"(ϕ 0.9mm)~ ϕ .059"(ϕ 1.5mm)

Applicable Housing: FHG20003Series

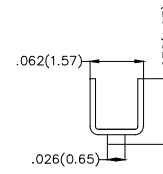
Minimum Order Quantity : 13,000 PCS



Section A-A



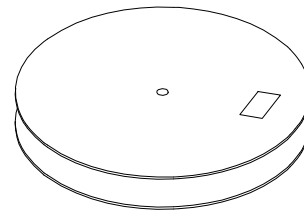
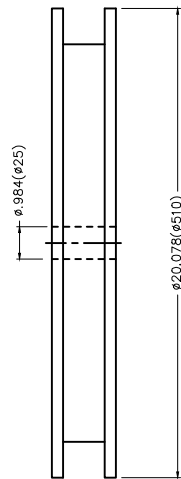
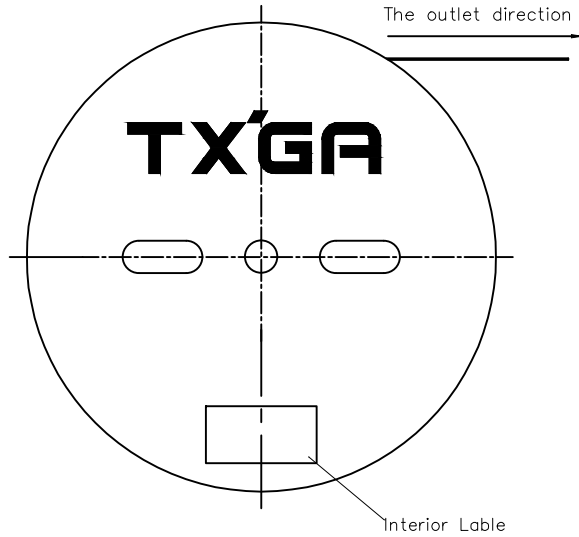
Section B-B



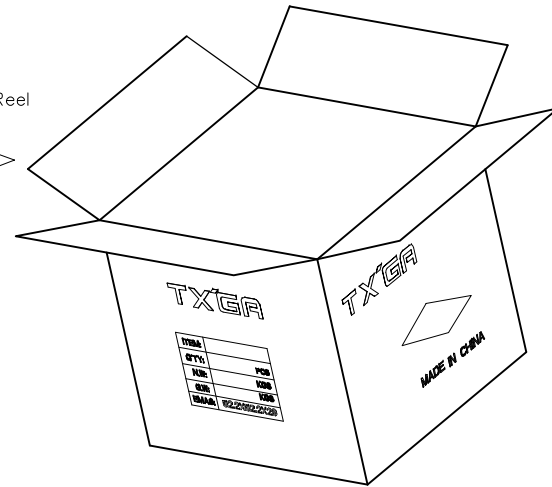
Section C-C

<p>THIRD ANGLE PROJECTION</p>	GENERAL TOLERANCES (UNLESS SPECIFIED)		APPROVE BY	DATE	PART NO.	ITEM NO.	<p>Leader Of Industry</p>	
	X.±.012(0.30)	X.'±5'	FRANK	25/JUN/13	FT20002-F2H	FT20002		
	DESIGN UNITS Inch (metric)	X.X±.008(0.20)	.X'±2'	CHECKED BY	DATE	TITLE		THIS DRAWING CONTAINS INFORMATION THAT IS PROPRIETARY TO TXGA INDUSTRIAL ELECTRONICS(S.Z)CO.,LTD AND SHOULD NOT BE USED WITHOUT WRITTEN PERMISSION
	SCALE	X.XX±.006(0.15)	.XX'±1'	JACOB	25/JUN/13	Wire to Board Pitch 2.0mm(Terminal)		
SIZE	X.XXX±.004(0.10)	.XXX'±0.5'	DRAWN BY	DATE			REV 1	
5:1	A4		CHERRY	25/JUN/13			SHEET NO. 1/2	

REV	LOCATIONS	DESCRIPTION	DATE	REVISER	APPD



13,000Pcs/Reel



 THIRD ANGLE PROJECTION	GENERAL TOLERANCES (UNLESS SPECIFIED)		APPROVE BY FRANK	DATE 25/JUN/13	PART NO. FT20002-F2H	ITEM NO. FT20002	 Leader Of Industry		
	DESIGN UNITS Inch (metric)	X.±.012(0.30)	X.'±5'	CHECKED BY JACOB	DATE 25/JUN/13	TITLE Wire to Board Pitch 2.0mm(Terminal)		REV 1	SHEET NO. 2/2
	SCALE 5:1	X.XX±.008(0.20)	.X'±2'	DRAWN BY CHERRY	DATE 25/JUN/13	THIS DRAWING CONTAINS INFORMATION THAT IS PROPRIETARY TO TXGA INDUSTRIAL ELECTRONICS(S.Z)CO.,LTD AND SHOULD NOT BE USED WITHOUT WRITTEN PERMISSION			
	SIZE A4	X.XX±.006(0.15)	.XX'±1'						
	X.XXX±.004(0.10)	.XXX'±0.5'							