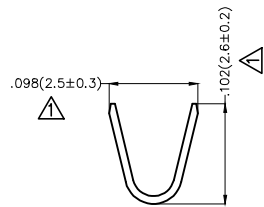
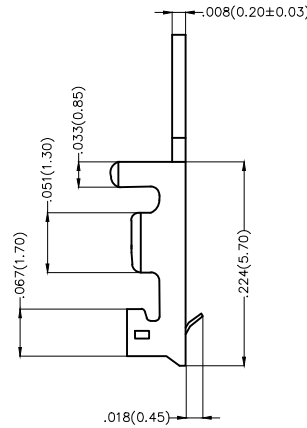
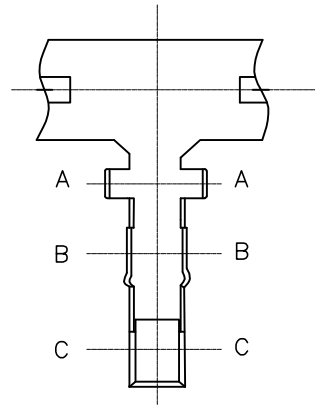


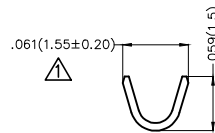
REV	LOCATIONS	DESCRIPTION	DATE	REVISER	APPD
1	△	Dimensions change	25/DEC/18	KATE	FRANK

Electrical

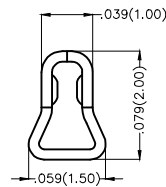
Current Rating: 2.0A AC/DC  
Voltage Rating: 100V AC/DC  
Contact Resistance: 10mΩ Max  
Withstanding Voltage: 800V AC/minute  
Material: Phosphor Bronze C5191  
Plating: Tin-Plated  
Wire Range: 30AWG~24AWG  
Insulation Nom.Dia:  $\phi 0.035''$  ( $\phi 0.9\text{mm}$ )~ $\phi 0.055''$  ( $\phi 1.4\text{mm}$ )  
Applicable Housing: FHG20001Series  
Minimum Order Quantity : 11,000 PCS



Section A-A



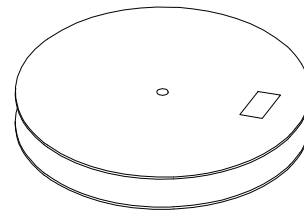
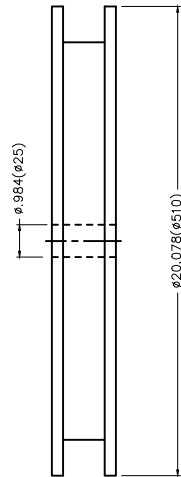
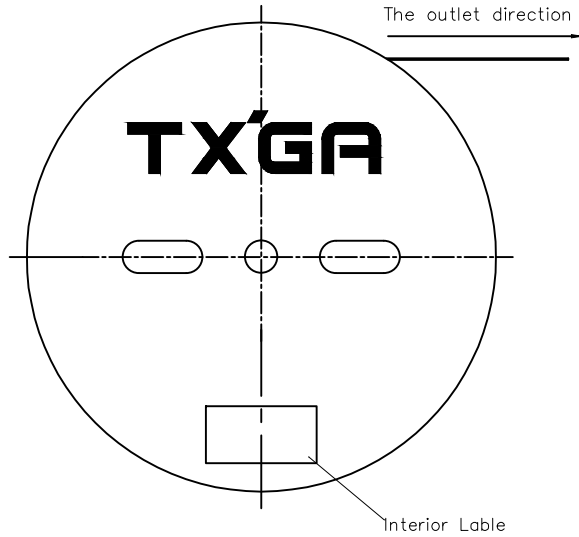
Section B-B



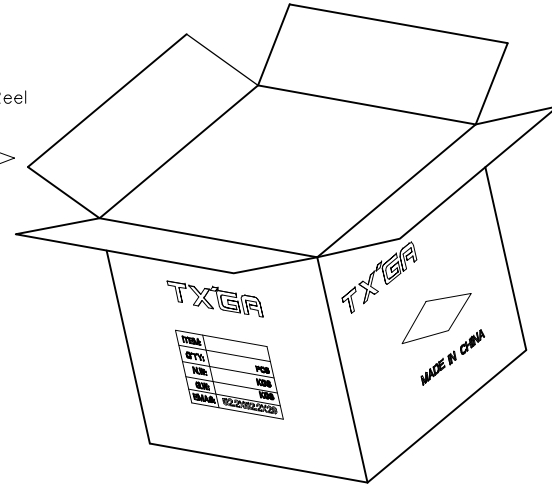
Section C-C

 THIRD ANGLE PROJECTION	GENERAL TOLERANCES (UNLESS SPECIFIED)		APPROVE BY FRANK	DATE 25/JUN/13	PART NO. FT20001-F2H	ITEM NO. FT20001	 Leader Of Industry	
	X.±.012(0.30)	X.'±5'	CHECKED BY JACOB	DATE 25/JUN/13	TITLE Wire to Board Pitch 2.0mm(Terminal)			REV 1
	DESIGN UNITS Inch (metric)	X.XX±.008(0.20)	.X'±2'	DRAWN BY CHERRY	DATE 25/JUN/13	THIS DRAWING CONTAINS INFORMATION THAT IS PROPRIETARY TO TXGA INDUSTRIAL ELECTRONICS(S.Z)CO.,LTD AND SHOULD NOT BE USED WITHOUT WRITTEN PERMISSION		
	SCALE 5:1	SIZE A4	X.XX±.006(0.15)	.XX'±1'	X.XXX±.004(0.10)	.XXX'±0.5'		

REV	LOCATIONS	DESCRIPTION	DATE	REVISER	APPD



11,000Pcs/Reel



<p>THIRD ANGLE PROJECTION</p>	GENERAL TOLERANCES (UNLESS SPECIFIED)		APPROVE BY	DATE	PART NO.	ITEM NO.	<p>Leader Of Industry</p>	
	X.±.012(0.30)	X.'±5'	FRANK	25/JUN/13	FT20001-F2H	FT20001		
	DESIGN UNITS Inch (metric)	X.X±.008(0.20)	.X'±2'	CHECKED BY	DATE	TITLE		THIS DRAWING CONTAINS INFORMATION THAT IS PROPRIETARY TO TXGA INDUSTRIAL ELECTRONICS(S.Z)CO.,LTD AND SHOULD NOT BE USED WITHOUT WRITTEN PERMISSION
	SCALE	X.XX±.006(0.15)	.XX'±1'	JACOB	25/JUN/13	Wire to Board Pitch 2.0mm(Terminal)		
5:1	X.XXX±.004(0.10)	.XXX'±0.5'	DRAWN BY	DATE	REV 1		SHEET NO. 2/2	
SIZE			CHERRY	25/JUN/13				
A4								