

REV	LOCATIONS	DESCRIPTION	DATE	REVISER	APPD

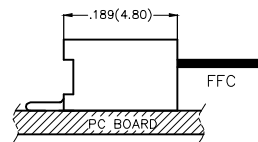
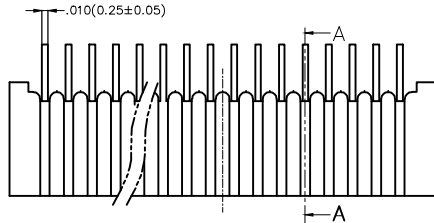
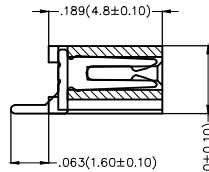
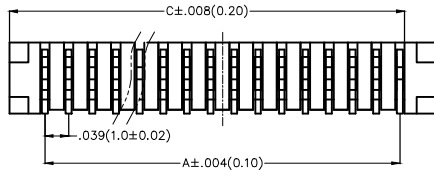
SPECIFICATIONS

Electrical

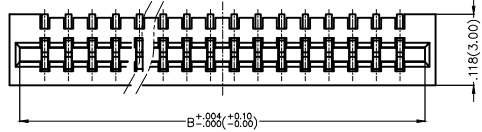
Current Rating: 0.5A AC(rms)/DC
Voltage Rating: 50V AC(rms)/DC
Contact Resistance: 20 mΩ Max
Insulation Resistance: 800 MΩ MIN
Withstanding Voltage: 500V AC/Minute
Operating Temperature: -20°C ~ +85°C

Material

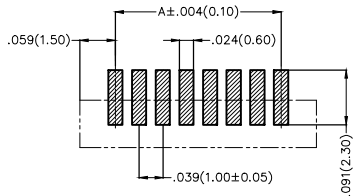
Housing: PA6T, UL 94V-0
Terminal: Phosphor Bronze



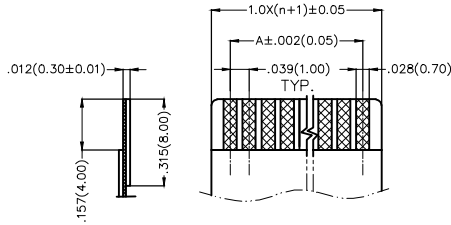
Assembl LAYOUT



Circuits (n)	Dimensions(in/mm)			Circuits (n)	Dimensions(in/mm)		
	A	B	C		A	B	C
4	.118(3.00)	.201(5.10)	.244(6.20)	16	.591(15.00)	.673(17.10)	.717(18.20)
5	.157(4.00)	.240(6.10)	.283(7.20)	17	.630(16.00)	.713(18.10)	.756(19.20)
6	.197(5.00)	.280(7.10)	.323(8.20)	18	.669(17.00)	.752(19.10)	.795(20.20)
7	.236(6.00)	.319(8.10)	.362(9.20)	19	.709(18.00)	.791(20.10)	.835(21.20)
8	.276(7.00)	.358(9.10)	.402(10.20)	20	.748(19.00)	.831(21.10)	.874(22.20)
9	.315(8.00)	.398(10.10)	.441(11.20)	21	.787(20.00)	.870(22.10)	.913(23.20)
10	.354(9.00)	.437(11.10)	.480(12.20)	22	.827(21.00)	.909(23.10)	.953(24.20)
11	.394(10.00)	.476(12.10)	.520(13.20)	24	.906(23.00)	.988(25.10)	1.031(26.20)
12	.433(11.00)	.516(13.10)	.559(14.20)	25	.945(24.00)	1.028(26.10)	1.071(27.20)
13	.472(12.00)	.555(14.10)	.598(15.20)	28	1.063(27.00)	1.146(29.10)	1.189(30.20)
14	.512(13.00)	.594(15.10)	.638(16.20)	30	1.142(29.00)	1.224(31.10)	1.268(32.20)
15	.551(14.00)	.634(16.10)	.677(17.20)	32	1.220(31.00)	1.303(33.10)	1.346(34.20)



Recommended P.C.Board Layout



Applicable FFC Recommended Dimension

Ordering Information

FFC 100 28 — XX S B D 2 2 4 K6 M
1 2 3 4 5 6 7 8 9 10 11 12

1 Category FFC-FPC	2 Series Number 100-Pitch1.00mm	3 Distinction No. 28	4 Circuits XX	5 Assemble Layout S-SMT	6 Entry Angle B-90° Angle
7 Contact Type D-Double Contact	8 ZIF 2-NON ZIF	9 Plating 2-Tin Plated	10 Material-Resin 4-PA6T	11 Color-Resin K6-Black	12 Packaging M-Reel

<p>THIRD ANGLE PROJECTION</p>	GENERAL TOLERANCES (UNLESS SPECIFIED)		APPROVE BY FRANK	DATE 5/AUG/13	PART NO. FFC10028-XXDBA121W1L	ITEM NO. FFC10028	<p>Leader Of Industry</p>	
	DESIGN UNITS Inch (metric)	X.X±.012(0.30)	X.±5'	CHECKED BY CHERRY	DATE 5/AUG/13	TITLE FPC/FFC connector 1.00mm Double Contact SMT		
	SCALE 5:1	X.XX±.006(0.15)	.XX±1'	DRAWN BY KEVIN	DATE 5/AUG/13	REV 0		SHEET NO. 1/1
	X.XXX±.004(0.10)	.XXX±0.5'			THIS DRAWING CONTAINS INFORMATION THAT IS PROPRIETARY TO TXGA INDUSTRIAL ELECTRONICS(S.Z)CO.,LTD AND SHOULD NOT BE USED WITHOUT WRITTEN PERMISSION			