

| REV | LOCATIONS | DESCRIPTION | DATE | REVISER | APPD |
|-----|-----------|-------------|------|---------|------|
| | | | | | |

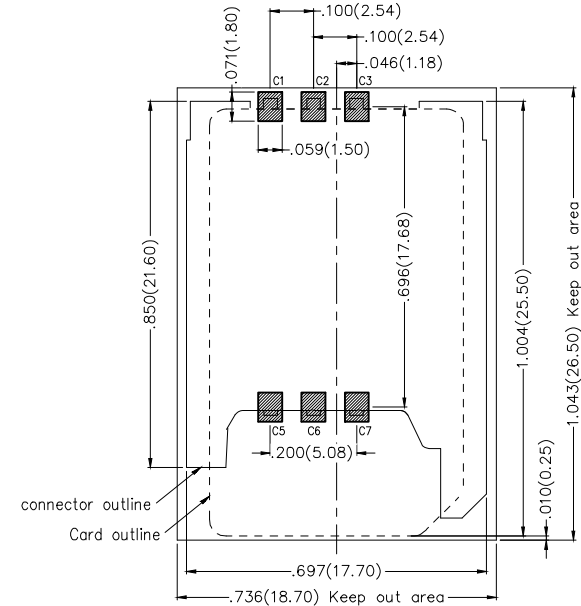
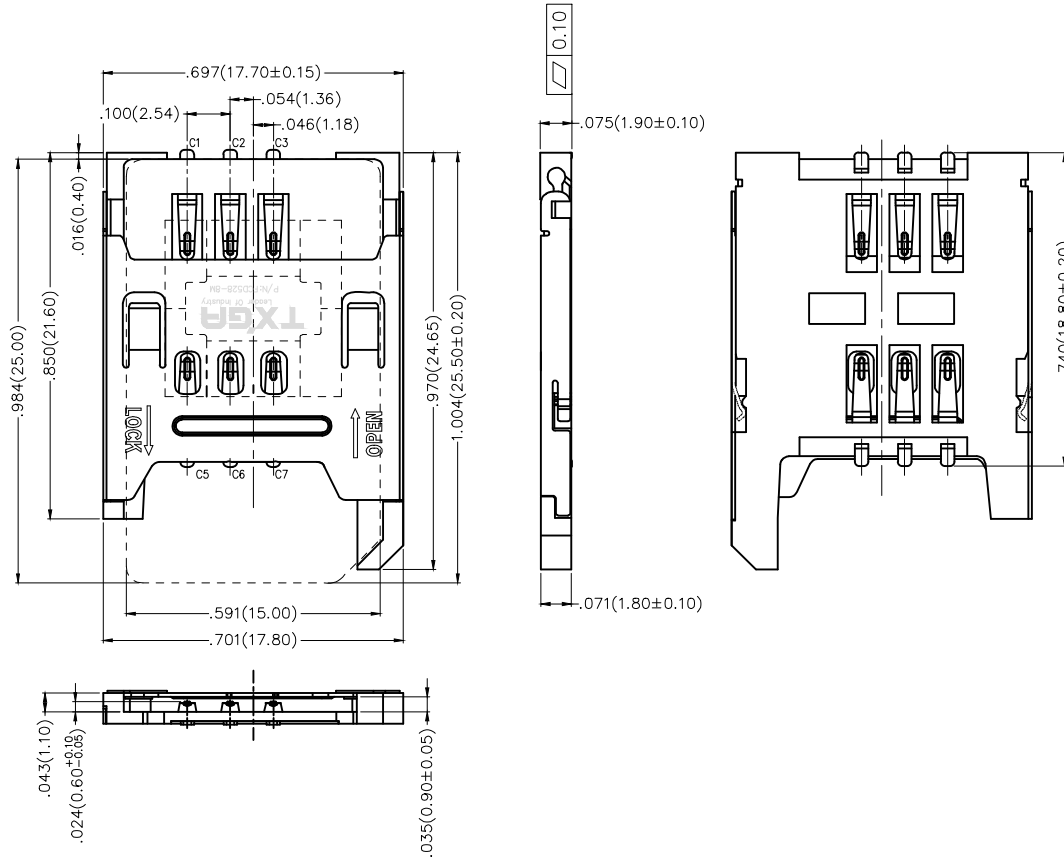
SPECIFICATIONS

Electrical

Current Rating: 1A AC(rms)/DC
 Voltage Rating: 250V AC(rms)/DC
 Contact Resistance: 30 mΩ Max
 Insulation Resistance: 1000 MΩ Min
 Withstanding Voltage: 500V AC r.m.s
 Temperature Range-Operating: -20°C~+85°C

Material and Plating

Housing: Thermoplastic (UL 94V-0) Black
 Pin: Copper Alloy/ Gold Plated
 Shell: Copper Alloy/ Nickel Plated



Recommended P.C.Board Layout

General Tolerances: ±0.05mm

| Circuits | Description |
|----------|-------------------------|
| C1 | Supply voltage vcc |
| C2 | Reset (RST) |
| C3 | Clock (CLK) |
| C4 | N/A |
| C5 | Ground |
| C6 | Programming voltage vpp |
| C7 | I/O |
| C8 | N/A |

| | | | | | | |
|-------------------------------|---------------------------------------|------------|----------------------------------------------------------------------------------------------------------------------------------------------------|-------------------|--------------------------------------|--------------------|
| <p>THIRD ANGLE PROJECTION</p> | GENERAL TOLERANCES (UNLESS SPECIFIED) | | APPROVE BY FRANK | DATE 02/DEC/16 | PART NO. FCD528-8M | ITEM NO. FCD528 |
| | X.±.012(0.30) | X.±5' | CHECKED BY CHERRY | DATE 02/DEC/16 | | |
| DESIGN UNITS Inch (metric) | X.X±.008(0.20) | .X'±2' | DRAWN BY KATE | DATE 02/DEC/16 | TITLE SIM card connector(H:1.8mm) | |
| SCALE 5:1 | X.XXX±.004(0.10) | .XXX'±0.5' | THIS DRAWING CONTAINS INFORMATION THAT IS PROPRIETARY TO TXGA INDUSTRIAL ELECTRONICS(S.Z)CO.,LTD AND SHOULD NOT BE USED WITHOUT WRITTEN PERMISSION | | | |



REV 0 SHEET NO. 1/1