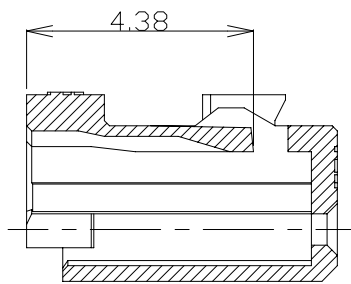
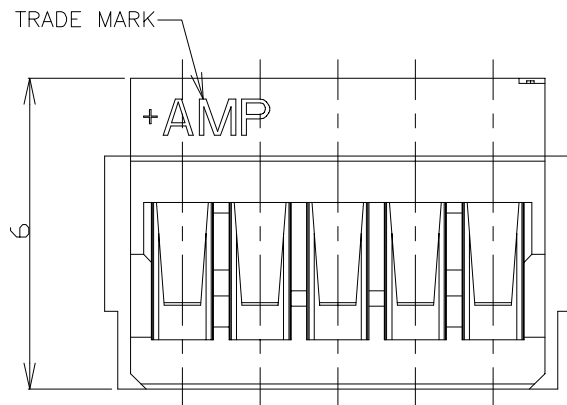
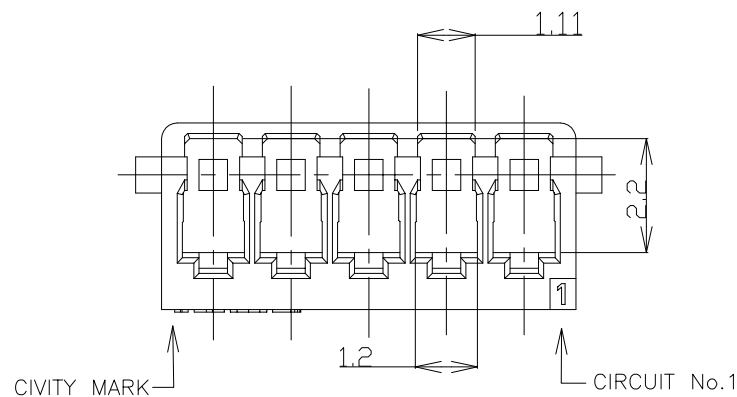
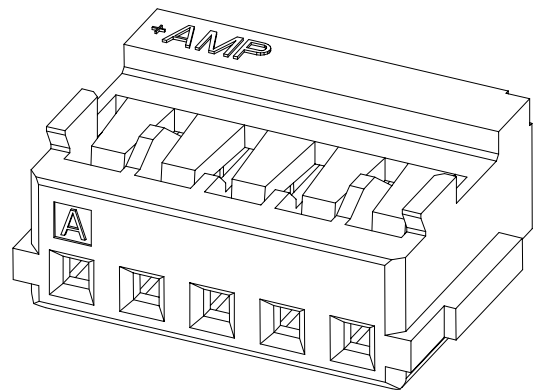
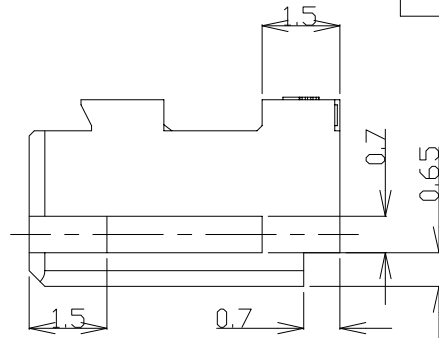
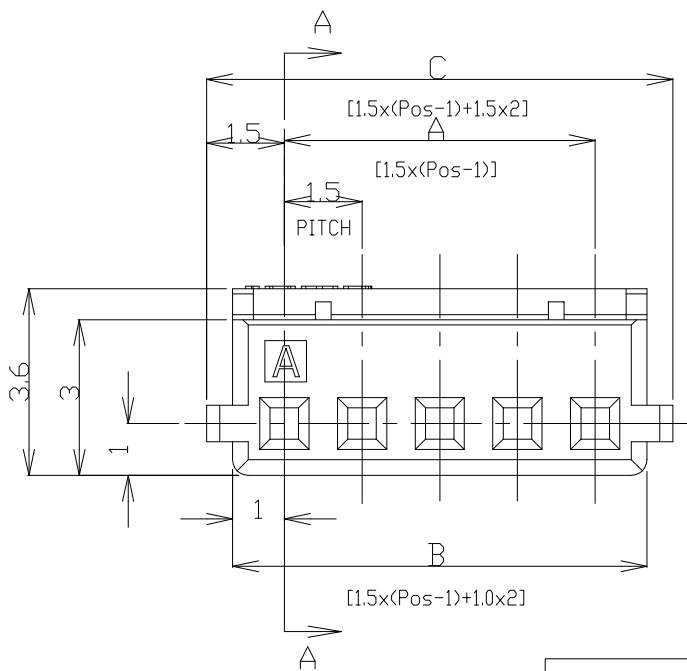


THIS DRAWING IS UNPUBLISHED. RELEASED FOR PUBLICATION
 © COPYRIGHT - By - ALL RIGHTS RESERVED.

LOC	DIST	REVISIONS					
ES	00	P	LTR	DESCRIPTION	DATE	DWN	APVD
		D		REVISED ECR-16-005069	07APR2016	T.Q	W.H



SECTION A-A



0.30	31.5	30.5	28.5	20	8-353908-0	2-353908-0
0.29	30.0	29.0	27.0	19	7-353908-9	1-353908-9
0.27	28.5	27.5	25.5	18	7-353908-8	1-353908-8
0.26	27.0	26.0	24.0	17	7-353908-7	1-353908-7
0.24	25.5	24.5	22.5	16	7-353908-6	1-353908-6
0.23	24.0	23.0	21.0	15	7-353908-5	1-353908-5
0.21	22.5	21.5	19.5	14	7-353908-4	1-353908-4
0.20	21.0	20.0	18.0	13	7-353908-3	1-353908-3
0.19	19.5	18.5	16.5	12	7-353908-2	1-353908-2
0.17	18.0	17.0	15.0	11	7-353908-1	1-353908-1
0.16	16.5	15.5	13.5	10	7-353908-0	1-353908-0
0.14	15.0	14.0	12.0	9	6-353908-9	353908-9
0.13	13.5	12.5	10.5	8	6-353908-8	353908-8
0.13	12.0	11.0	9.0	7	6-353908-7	353908-7
0.10	10.5	9.5	7.5	6	6-353908-6	353908-6
0.09	9.0	8.0	6.0	5	6-353908-5	353908-5
0.07	7.5	6.5	4.5	4	6-353908-4	353908-4
0.06	6.0	5.0	3.0	3	6-353908-3	353908-3
0.04	4.5	3.5	1.5	2	6-353908-2	353908-2
WEIGHT (g)	DIMENSIONS			Pos	BLUE	WHITE
	C	B	A		P/N	

- NOTES:
 1. APPLICABLE WIRE SIZE: AWG#24~#30(0.22mm²~0.05mm²).
 INSULATION DIAMETER: 0.7mm~1.03mm.
 2. USE WITH RECEPTACLE CONTACT P/N
 AWG#24~#28: 353907-1, 353918-1(L/P)

GENERAL TOLERANCE

10 ≥	±0.2
30 ≥ > 10	±0.25
100 ≥ > 30	±0.3
ANGLES: ±3°	

THIS DRAWING IS A CONTROLLED DOCUMENT.

DIMENSIONS:	TOLERANCES UNLESS OTHERWISE SPECIFIED:
mm	0 PLC ±-
	1 PLC ±-
	2 PLC ±-
	3 PLC ±-
	4 PLC ±-
	ANGLES ±-
MATERIAL	FINISH
66NYLON	
UL94 V-0	

WIRE RANGE		INSULATION DIA	
DWN H.HOSHINO 26.APR.'97		CHK J.TANIGAWA 26.APR.'97	
APVD S.KUBONOHI 10.MAR.'99		NAME	
PRODUCT SPEC		AMP MINI COMMON TERMINATED (CT)	
APPLICATION SPEC		CONNECTOR 1.5mm PITCH	
108-60025		HOUSING, CRIMP TYPE	
SIZE	CAGE CODE	DRAWING NO	RESTRICTED TO
A3	00779	C=353908	
CUSTOMER DRAWING		SCALE	SHEET
		NON	1 of 2
		REV	D

4

3

2

1

THIS DRAWING IS UNPUBLISHED.

RELEASED FOR PUBLICATION

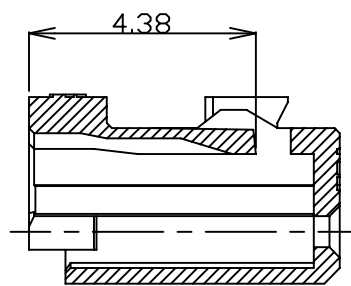
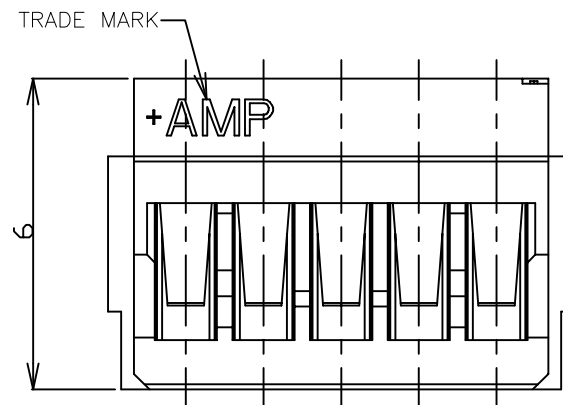
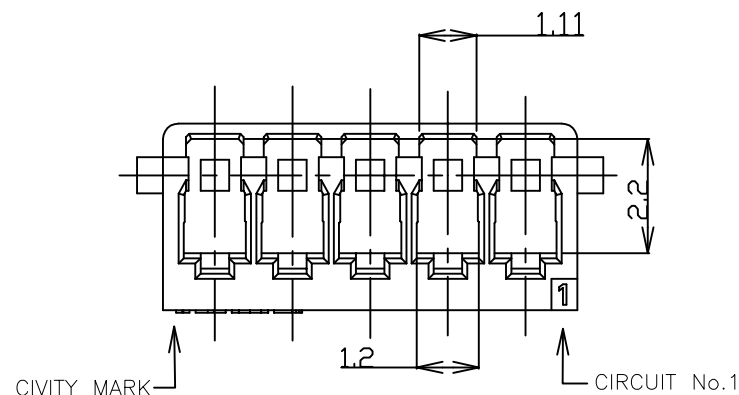
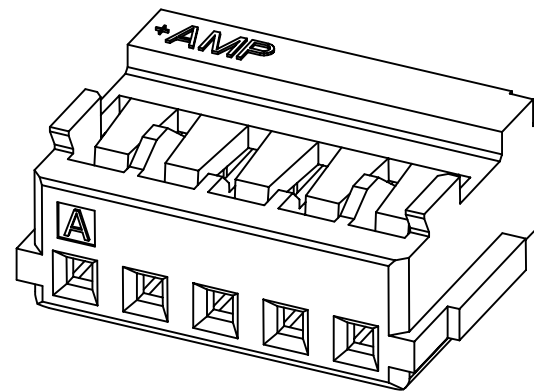
© COPYRIGHT - By -

ALL RIGHTS RESERVED.

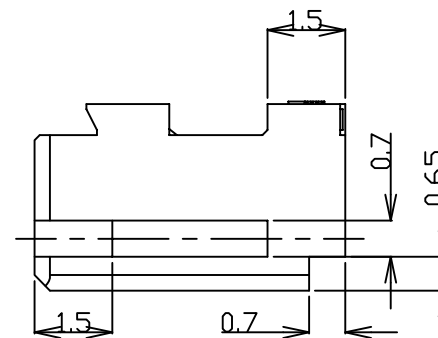
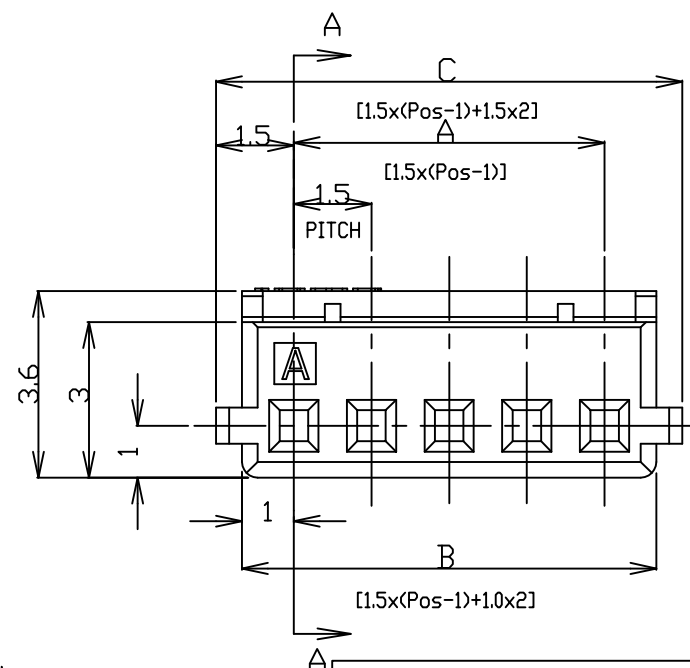
LOC ES DIST 00

REVISIONS

P	LTR	DESCRIPTION	DATE	DWN	APVD
-	-	SEE SHEET 1	-	-	-



SECTION A-A



Pos	A	B	C	WEIGHT (g)	P/N
4-353908-0	20	30.5	31.5	0.30	
3-353908-9	19	29.0	30.0	0.29	
3-353908-8	18	27.5	28.5	0.27	
3-353908-7	17	26.0	27.0	0.26	
3-353908-6	16	24.5	25.5	0.24	
3-353908-5	15	23.0	24.0	0.23	
3-353908-4	14	21.5	22.5	0.21	
3-353908-3	13	20.0	21.0	0.20	
3-353908-2	12	18.5	19.5	0.19	
3-353908-1	11	17.0	18.0	0.17	
3-353908-0	10	15.5	16.5	0.16	
2-353908-9	9	14.0	15.0	0.14	
2-353908-8	8	12.5	13.5	0.13	
2-353908-7	7	11.0	12.0	0.13	
2-353908-6	6	9.5	10.5	0.10	
2-353908-5	5	8.0	9.0	0.09	
2-353908-4	4	6.5	7.5	0.07	
2-353908-3	3	5.0	6.0	0.06	
2-353908-2	2	3.5	4.5	0.04	
	Pos	DIMENSIONS		WHITE	

- NOTES:
- APPLICABLE WIRE SIZE: AWG#24~#30(0.22mm²~0.05mm²).
INSULATION DIAMETER: 0.7mm~1.03mm.
 - USE WITH RECEPTACLE CONTACT P/N
AWG#24~#28: 353907-1, 353918-1(L/P)
 - COMPLY WITH GLOW WIRE REQUIREMENTS FOR PARTS OF
NON-METALLIC MATERIAL SUPPORTING A CURRENT-CARRYING
CONNECTION DETAILED IN IEC 60335-1, SECTION 30(GWT).

THIS DRAWING IS A CONTROLLED DOCUMENT.		DWN H.HOSHINO 26.APR.'97													
		CHK J.TANIGAWA 26.APR.'97													
DIMENSIONS: mm		APVD S.KUBONOHI 10.MAR.'99	NAME												
TOLERANCES UNLESS OTHERWISE SPECIFIED:		PRODUCT SPEC		AMP MINI COMMON TERMINATED (CT) CONNECTOR 1.5mm PITCH HOUSING, CRIMP TYPE											
<table border="0"> <tr><td>0 PLC</td><td>±</td></tr> <tr><td>1 PLC</td><td>-</td></tr> <tr><td>2 PLC</td><td>±</td></tr> <tr><td>3 PLC</td><td>±</td></tr> <tr><td>4 PLC</td><td>±</td></tr> <tr><td>ANGLES</td><td>±</td></tr> </table>		0 PLC	±		1 PLC	-	2 PLC	±	3 PLC	±	4 PLC	±	ANGLES	±	APPLICATION SPEC
0 PLC	±														
1 PLC	-														
2 PLC	±														
3 PLC	±														
4 PLC	±														
ANGLES	±														
MATERIAL		WEIGHT		RESTRICTED TO											
6 NYLON UL94 V-2		114-5245													
		CUSTOMER DRAWING													
		SIZE A3	CAGE CODE 00779	DRAWING NO C=353908											
		SCALE NON	SHEET 2 of 2	REV D											