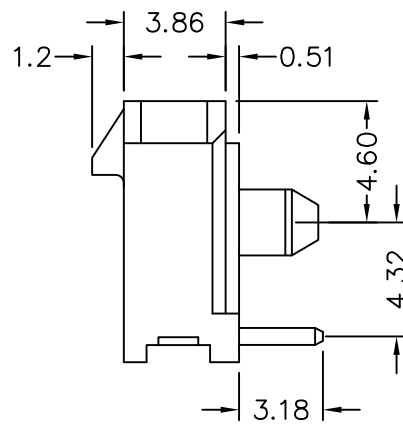


P.C.B Layout



MATERIAL

Insulator : LCP
Contact Pin : Brass

SPECIFICATION

Current Rate :

Wire size	# 20	# 22	# 24	# 26	# 28	# 30
AMP	5A	5A	4A	3A	2A	1A

Voltage rating : 250V

Dielectric Strength : 1500V AC/minute

Contact Resistance : 10mΩMax.

Temperature rise : 30°C max.(carry rated current load)

733-9 4- 04 T B 1 5
1 2 3 4 5 6

- 1: 4: Right angle type, Single row
- 2: No. of contacts
- 3: T: Tin plated
- 4: B: Black Insulator
- 5: 1: With post
- 6: Pinrex internal code.



REV.		DESCRIPTION	DATE	TOLERANCE	UNITS : mm	SCALE	SIZE	SHEET	REV.	APP'D	NEW PART NO.	DRAW NO.
A		RELEASE	2018/06/22	.0 =±.30 .00 =±.20 .000 =±.XXX .0000=±. ANG.=±3'	UNITS : mm	NONE	A4	1 OF 1	A	李劍	733-94-04TB15	733-94-04TB15

OLD PART NO.	TITLE	頻銳科技股份有限公司 PINREX TECHNOLOGY CORP.	
	118"(3.0mm) Single Row Righth Header Bag	文管中心	發行章
DRAWER 袁丽娜	CHECK 李劍	2018.06.22	
SCALE NONE	SIZE A4	APP'D 李劍	
NEW PART NO. 733-94-04TB15			