

MATERIAL

Insulator : NYLON 6T or 9T

Contact Pin : Brass

SPECIFICATION

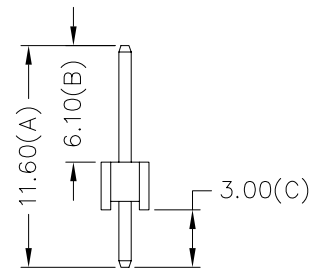
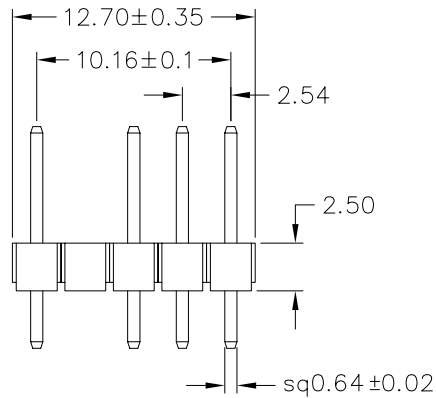
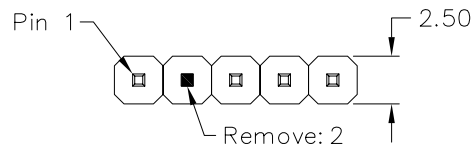
Current Rate : 3 AMP

Insulation Resistance : 5000MΩMin. at DC 500V

Contact Resistance : 20mΩMax. at DC 100mA

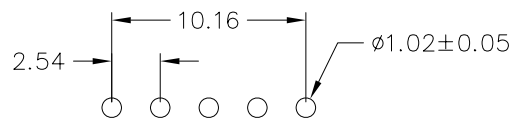
Dielectric Voltage : AC 500V for one minute

Operation Temperature : -40°C to + 105°C



210-9 1- 05 G B 03
1 2 3 4 5

- 1. 1: Single row
- 2. 2: Dual rows
- 3. G: Gold flash
- S: Selective
- T: Tin plated
- 4. B: Black Insulator
- W: White Insulator
- 5. Pinrex internal code.



Recommended P.C.B Layout

				<p>TOLERANCE</p> <p>.0 =±.30</p> <p>.00 =±.20</p> <p>.000 =±.XXX</p> <p>.0000=±.</p> <p>ANG.=±3'</p>				<p>OLD PART NO.</p> <p>PH1S-105GB1160B1(D1)</p>		<p>TITLE</p> <p>PIN HEADER 2.54*2.54mm</p> <p>STRAIGHT TYPE, SINGLE ROW</p>		<p>頻銳科技股份有限公司</p> <p>PINREX TECHNOLOGY CORP.</p>	
				<p>UNITS : mm</p>		<p>DRAWER</p> <p>Amy1</p>		<p>CHECK</p>					
A		RELEASE		2004/12/16		SCALE		SIZE		SHEET		REV.	
REV.		DESCRIPTION		DATE		NONE		A4		1 OF 1		APP'D	
										NEW PART NO.		DRAW NO.	
										210-91-05GB03		210-91-05GB03	