

WWW.SZLCSC.COM

RJ45 插座

电气性能参数

ELECTRICAL:

CURRENT RATING:1.5A VOLTAGE RATING: 125V AC

INSULATION RESISTANCE:500M Ω Mini

WITHSTAND VOLTAGE: AC 1500 V RMS 50Hz OR 60Hz 1 Min

CONTACT RESISTANCE: 20m Ω Max

MECHANICAL:

INSERTION FORCE: 2 CONTACTS-----350g, 4 CONTACTS-----500g,

6 CONTACTS-----750g, 8 CONTACTS-----900g, 10 CONTACTS-----1050g ;

RETENTION STRENGTH: 7.7Kg BETWEEN JACK AND PLUG

DURABILITY: 750 MATING CYCLES Mini;

MATERIAL:

HOUSING: 1) GLASS FILLED PA66 (UL 94V-0), 2) GLASS FILLED PA46 (UL 94V-0)

3) GLASS FILLED PBT (UL 94V-0)

SPRING WIRE: 1) 0.45mm DIA PHOSPHOR BRONZE GOLD PLATING OVER NICKEL

2) 0.35mm THICKNESS PHOSPHOR BRONZE ALLOY SELECTIVE GOLD PLATING OVER NICKEL

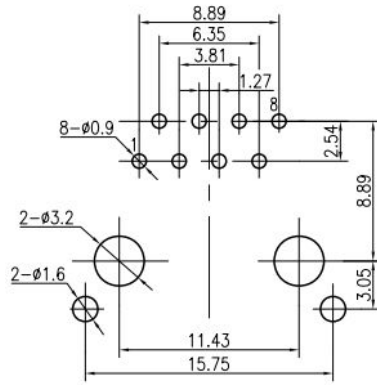
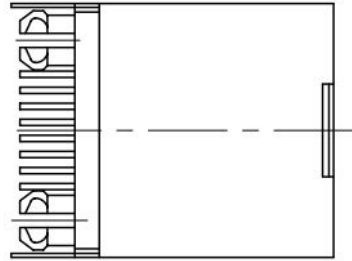
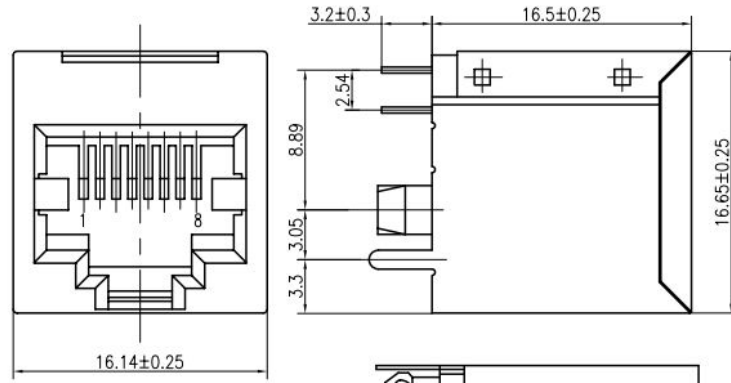
SHIELDING: 0.25mm THICKNESS COPPER ALLOY WITH TIN PLATED

GOLD PLATING: 3 μ *, 6 μ *, 15 μ *, 30 μ *, 50 μ *

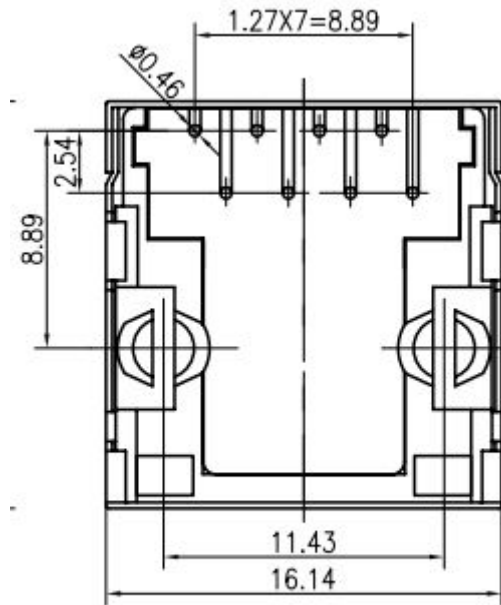
WORKING TEMPERATURE: -40 $^{\circ}$ C~70 $^{\circ}$ C

TOLERANCES UNLESS OTHERWISE SPECIFIED:0~10 \pm 0.15, 10~20 \pm 0.2,
20~40 \pm 0.25, 40~70 \pm 0.3, >70 \pm 0.4

产品尺寸



PCB BOARD LAYOUT



产品图片

