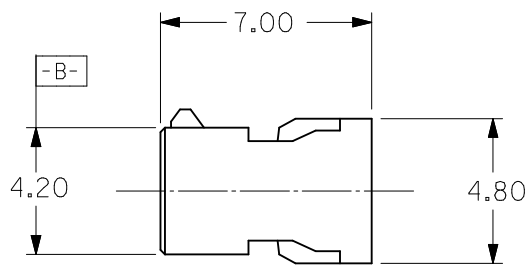
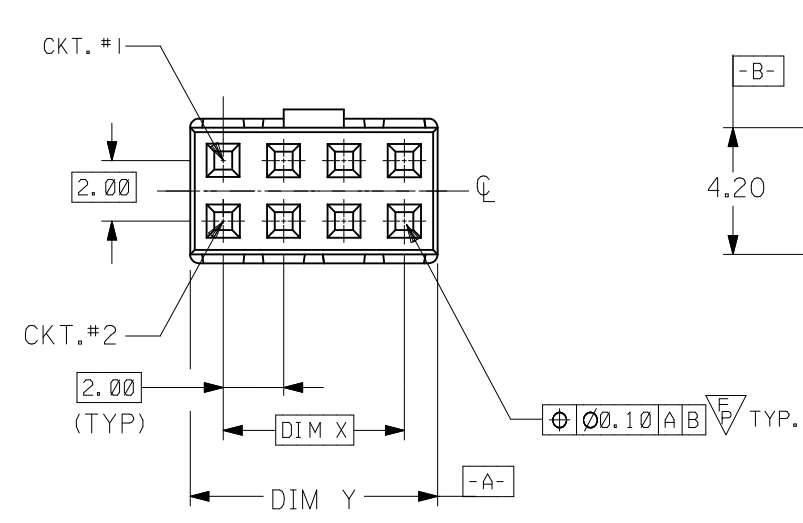
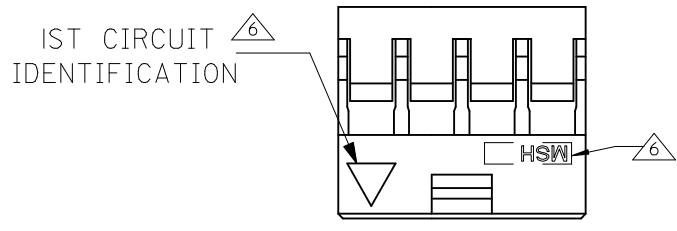


10 9 8 7 6 5 4 3 2 1

PART NUMBER	CKT SIZE	DIM X	DIM Y
51110-0460	4	2.00	4.20
51110-0660	6	4.00	6.20
51110-0860	8	6.00	8.20
51110-1060	10	8.00	10.20
51110-1260	12	10.00	12.20

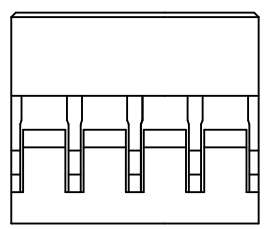


**LEGEND:**

51110 - \*\*60

CKT SIZE

- NOTES :
1. MATERIAL : GLASS FILLED POLYESTER UL RATED 94V-0, COLOUR BLACK.
  2. FOR ILLUSTRATION PURPOSES, 8CKT CKT SIZE HOUSING IS AS SHOWN.
  3. PARTS TO BE USED WITH CRIMP TERMINAL PART NUMBER: 50394-8\*\*\*.
  4. APPLICABLE WIRE RANGE : AWG # 24 - #30"
  5. WIRE INSULATION RANGE : DIAMETER 1.40MM MAXIMUM.
- △ MSH LOGO, CAVITY ID AND 1ST CKT IDENTIFICATION TO BE LOCATED APPROXIMATELY AS SHOWN.



<b>CHG MFG LOGO</b> EC NO: S2015-0352 DRW:NAT/SEE 2014/12/09 CHKD:COLYNN GOH 2014/12/09 APPR:KHL JM 2014/12/19	DESCRIPTION REV	QUALITY SYMBOLS	GENERAL TOLERANCES (UNLESS SPECIFIED)		DIMENSION STYLE MM ONLY		SCALE NTS	DESIGN UNITS METRIC	THIRD ANGLE PROJECTION		
		$F_A=0$ $F_C=0$ $F_P=1$	mm	INCH	DRAWN BY SEE	DATE 1995/05/22	TITLE 2MM GRID,WTB CONN. CRIMP RECEPT. HSG.				
		4 PLACES ± --- ± ---	3 PLACES ± --- ± ---	2 PLACES ± 0.20 ± ---	1 PLACE ± --- ± ---	0 PLACE ± ±	CHECKED BY SK TOH	DATE 1995/08/15	<b>molex</b> DOCUMENT NO. SD-51110-**60 SHEET NO. 1 OF 1		
		DRAFT WHERE APPLICABLE MUST REMAIN WITHIN DIMENSIONS					APPROVED BY	DATE			
A1	REV	ANGULAR ± 3°		MATERIAL NO. SEE TABLE		DOCUMENT NO. SD-51110-**60		THIS DRAWING CONTAINS INFORMATION THAT IS PROPRIETARY TO MOLEX INCORPORATED AND SHOULD NOT BE USED WITHOUT WRITTEN PERMISSION			

9 8 7 6 5 4 3 2 1