

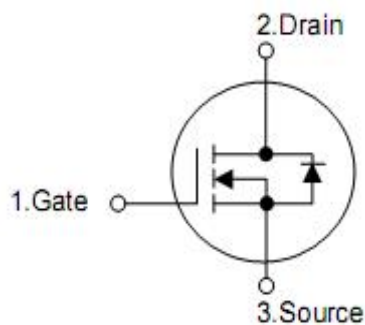
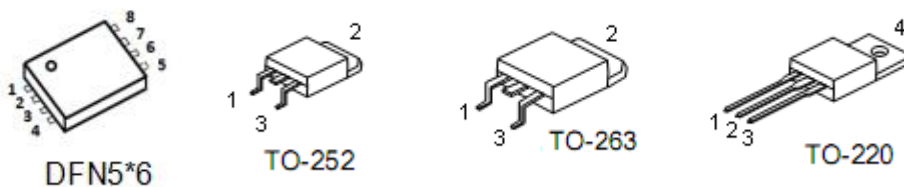
1. General Features

- n $R_{DS(ON),typ.}=4m\Omega @ V_{GS}=10V$
- n Proprietary New Trench Technology
- n Low Gate Charge Minimize Switching Loss
- n Fast Recovery Body Diode

2. Applications

- n DC-DC converters
- n DC-DC Inverters
- n Power Supply

3. Pin configuration



Pin TO-220	Pin TO-252 TO-263	Pin DFN5*6	Function
1	1	4	Gate
2,4	2	5,6,7,8	Drain
3	3	1,2,3	Source

4. Ordering Information

Part Number	Package	Brand
KND3204A	TO-252	KIA
KNY3204A	DFN5*6	KIA
KNB3204A	TO-263	KIA
KNP3204A	TO-220	KIA

5. Absolute maximum ratings

(T_c= 25 °C , unless otherwise specified)

Symbol	Parameter	TO-252/DFN5*6	TO-263/220	Unit
V _{DSS}	Drain-to-Source Voltage ^[1]	40		V
V _{GSS}	Gate-to-Source Voltage	±20		
I _D	Continuous Drain Current ^[2]	100*	100	A
	Continuous Drain Current ^[3]	80*	80	
I _{DM}	Pulsed Drain Current at V _{GS} =10V ^[2,4]	480*	480	
E _{AS}	Single Pulse Avalanche Energy	500		mJ
dv /dt	Peak Diode Recovery dv/dt ^[3]	5.0		V/ns
P _D	Power Dissipation	137	250	W
	Derating Factor above 25 °C	1.09	2	W/ °C
T _L T _{PAK}	Maximum Temperature for Soldering Leads at 0.063in (1.6mm) from Case for 10 seconds, Package Body for 10 seconds	300 260		°C
T _J &T _{STG}	Operating and Storage Temperature Range	-55 to 175		

Caution: Stresses greater than those listed in the “Absolute Maximum Ratings” may cause permanent damage to the device.

* Drain current limited by maximum junction temperature.

6. Thermal characteristics

Symbol	Parameter	TO-252 DFN5*6	TO-263 TO-220	Unit
R _{θJC}	Thermal Resistance, Junction-to-Case	1.09	0.6	°C /W
R _{θJA}	Thermal Resistance, Junction-to-Ambient	113	62	

6. Electrical characteristics

OFF Characteristics		(T _J =25°C, unless otherwise specified)				
Symbol	Parameter	Test Conditions	Min.	Typ.	Max.	Unit
B _V DSS	Drain-to-Source Breakdown Voltage	V _{GS} =0V, I _D =250uA	40	--	--	V
I _{DSS}	Drain-to-Source Leakage Current	V _{DS} =40V, V _{GS} =0V	--	--	1	uA
		V _{DS} =32V, V _{GS} =0V, T _J =125°C	--	--	100	
I _{GSS}	Gate-to-Source Leakage Current	V _{GS} =+20V, V _{DS} =0V	--	--	+100	nA
		V _{GS} =-20V, V _{DS} =0V	--	--	-100	
ON Characteristics		(T _J =25°C, unless otherwise specified)				
Symbol	Parameter	Test Conditions	Min.	Typ.	Max.	Unit
R _{DS(ON)}	Static Drain-to-Source On-Resistance ^[4]	V _{GS} =10V, I _D =24A ^[5] (TO-252,263,220)	--	4.0	4.5	mΩ
		V _{GS} =10V, I _D =24A ^[5] (DFN5*6)	--	3.5	4.5	mΩ
V _{GS(TH)}	Gate Threshold Voltage	V _{DS} =V _{GS} , I _D =250uA	2.0	--	4.0	V
Dynamic Characteristics		Essentially independent of operating temperature				
Symbol	Parameter	Test Conditions	Min.	Typ.	Max.	Unit
C _{iss}	Input Capacitance	V _{GS} =0V, V _{DS} =25V, f=1.0MHZ	--	3000	--	pF
C _{oss}	Output Capacitance		--	425	--	
C _{rss}	Reverse Transfer Capacitance		--	235	--	
R _g	Gate Series Resistance	f=1.0MHZ	--	3.0	--	Ω
Q _g	Total Gate Charge	V _{DD} =20V, I _D =80A, V _{GS} =0 to 10V	--	51	--	nC
Q _{gs}	Gate-to-Source Charge		--	14.5	--	
Q _{gd}	Gate-to-Drain (Miller) Charge		--	9	--	
Resistive Switching Characteristics		Essentially independent of operating temperature				
Symbol	Parameter	Test Conditions	Min.	Typ.	Max.	Unit
t _{d(ON)}	Turn-on Delay Time	V _{DD} =20V, I _D =50A, V _{GS} = 10V R _G =10Ω	--	15	--	nS
t _{rise}	Rise Time		--	60	--	
t _{d(OFF)}	Turn-Off Delay Time		--	75	--	
t _{fall}	Fall Time		--	40	--	
Source-Drain Body Diode Characteristics		(T _J =25°C, unless otherwise specified)				
Symbol	Parameter	Test Conditions	Min	Typ.	Max.	Unit
I _{SD}	Continuous Source Current ^[4]	Integral PN-diode in MOSFET	--	--	100	A
I _{SM}	Pulsed Source Current ^[4]		--	--	480	
V _{SD}	Diode Forward Voltage	I _S =24A, V _{GS} =0V	--	--	1.4	V
t _{rr}	Reverse recovery time	V _{GS} =0V, I _F =80A, diF/dt=100A/μs	--	50	--	ns
Q _{rr}	Reverse recovery charge		--	35	--	uC

Note:

[1] T_J = +25 °C to +175 °C. [2] Silicon limited current only. [3] Package limited current.

[4] Repetitive rating; pulse width limited by maximum junction temperature.

[5] Pulse width ≤ 380μs; duty cycle ≤ 2%.

7. Test circuits and waveforms

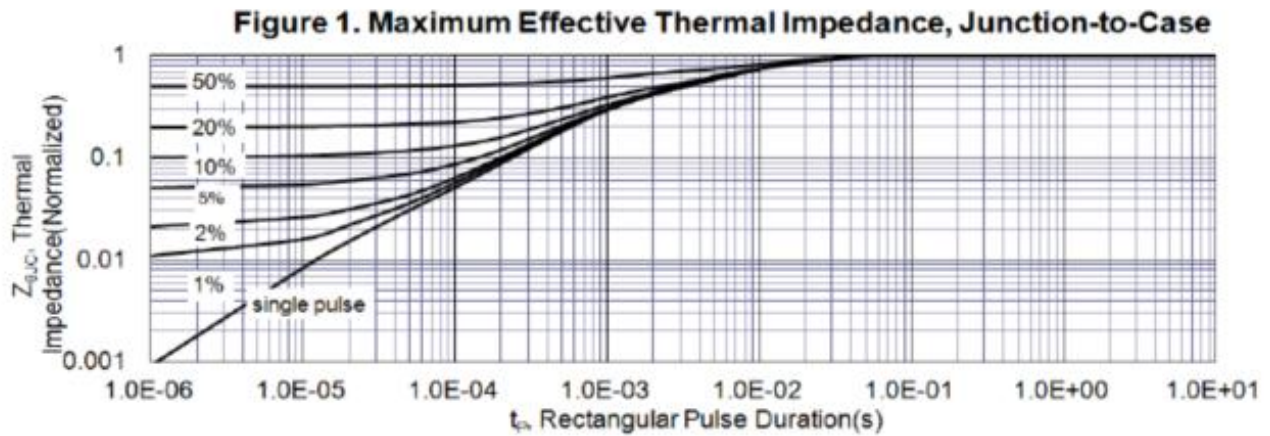


Figure 2. Maximum Power Dissipation vs Case Temperature

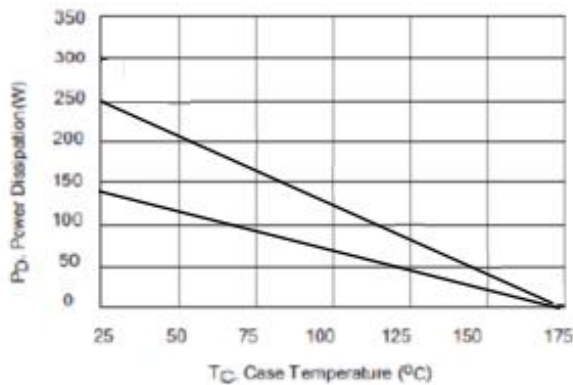


Figure 3. Maximum Continuous Drain Current vs Case Temperature

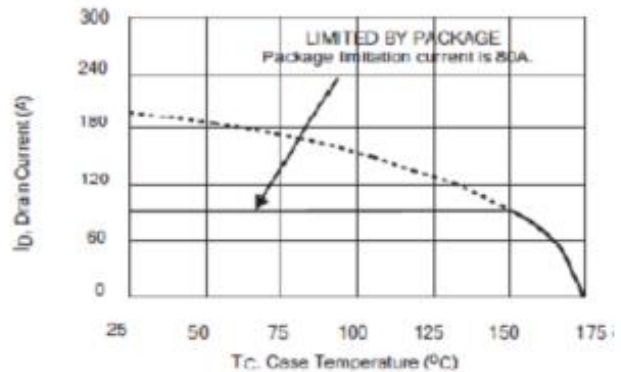


Figure 4. Typical Output Characteristics

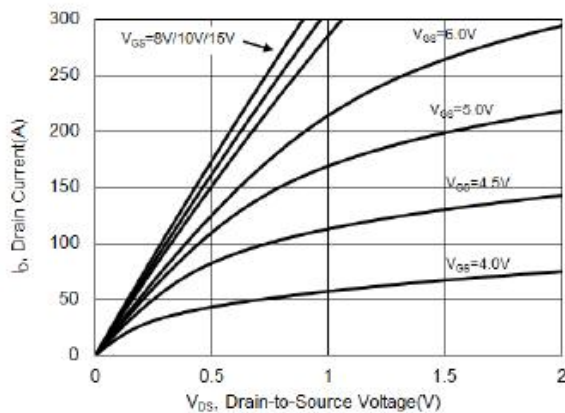


Figure 5. Typical Drain-to-Source ON Resistance vs. Gate Voltage

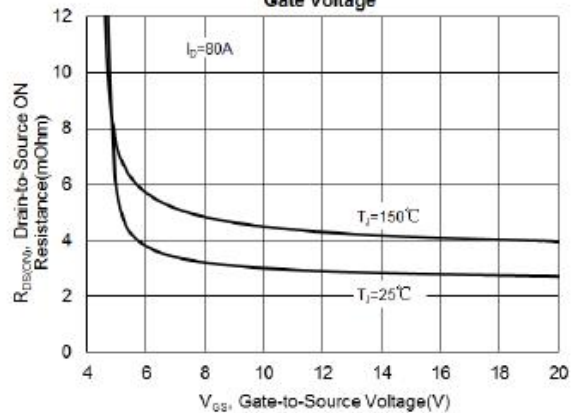


Figure 6. Maximum Peak Current Capability

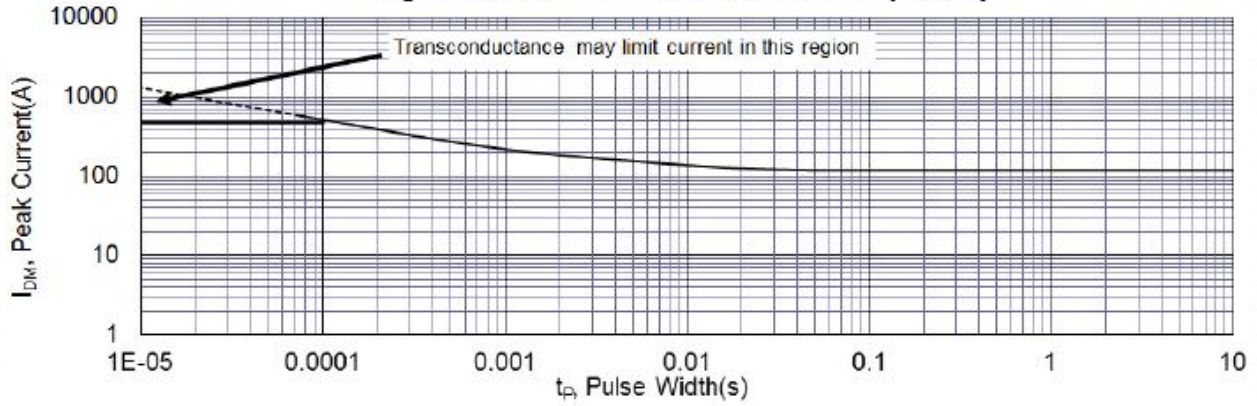


Figure 7. Typical Transfer Characteristics

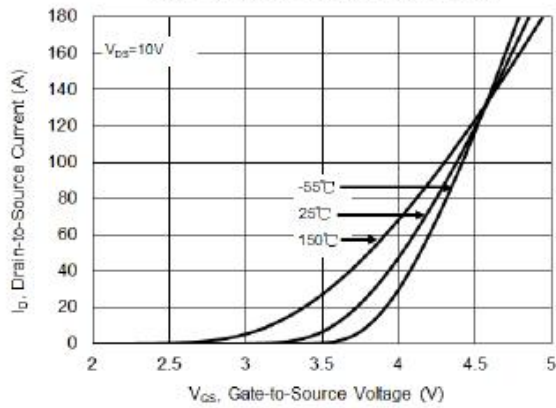


Figure 8. Unclamped Inductive Switching Capability

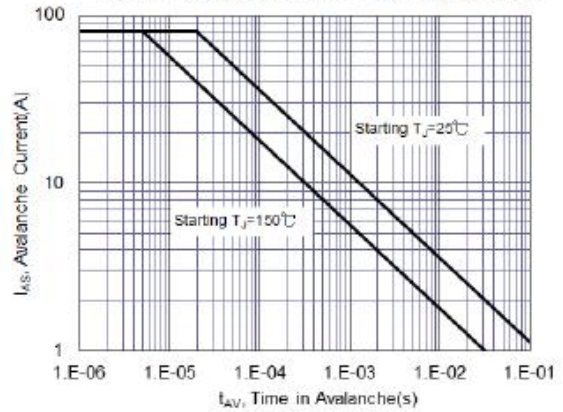


Figure 9. Typical Drain-to-Source ON Resistance

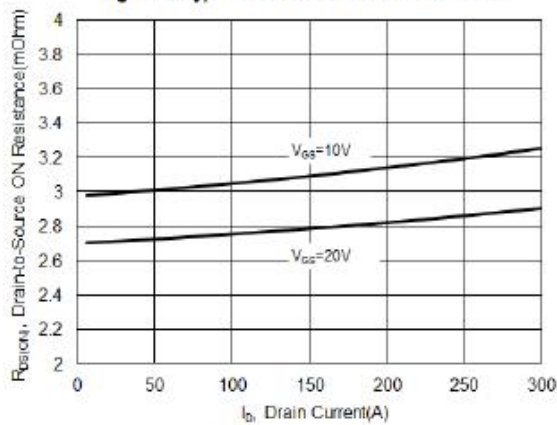


Figure 10. Typical Drain-to-Source On Resistance vs. Junction Temperature

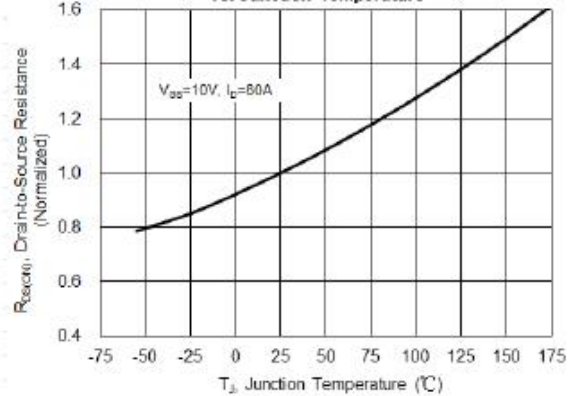


Figure 11. Typical Breakdown Voltage vs. Junction Temperature

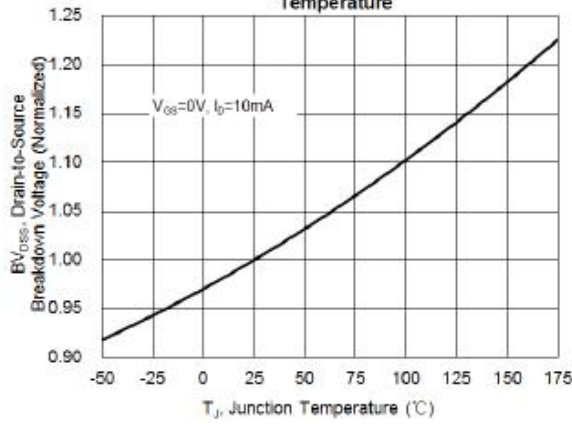


Figure 12. Typical Threshold Voltage vs. Junction Temperature

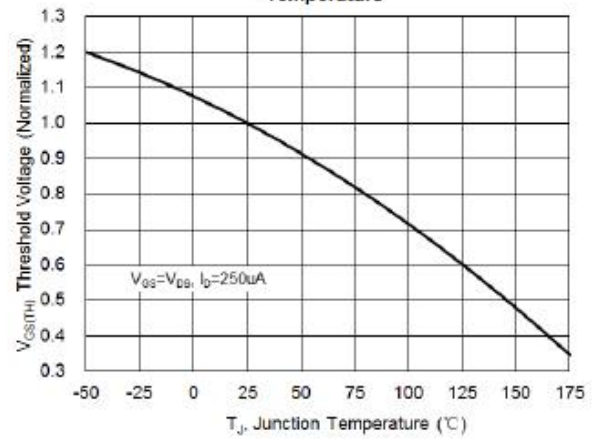


Figure 13. Maximum Forward Safe Operation Area

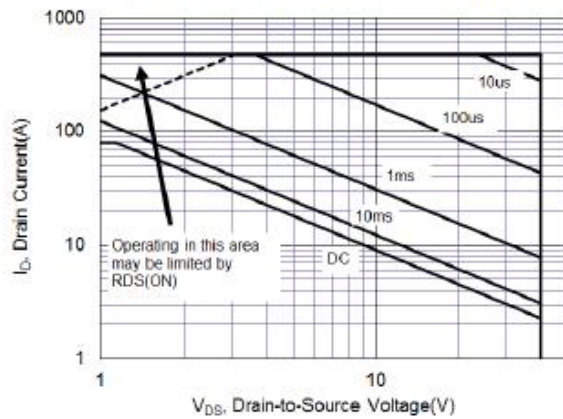


Figure 14. Typical Capacitance vs. Drain-to-Source Voltage

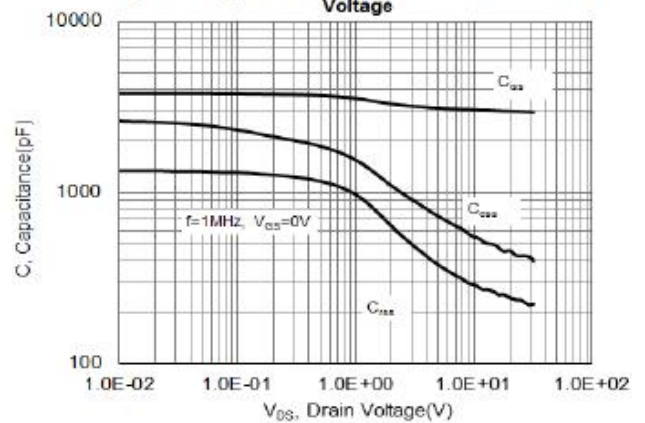


Figure 15. Typical Gate Charge vs. Gate-to-Source Voltage

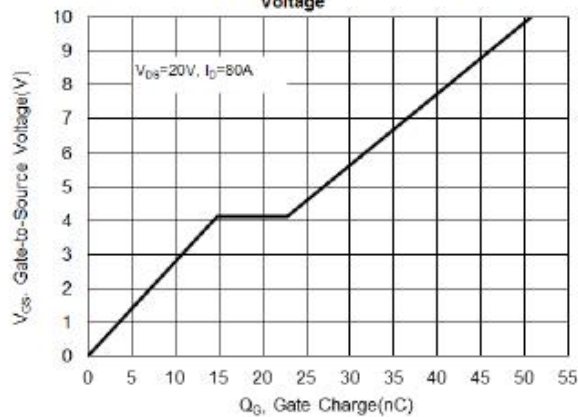
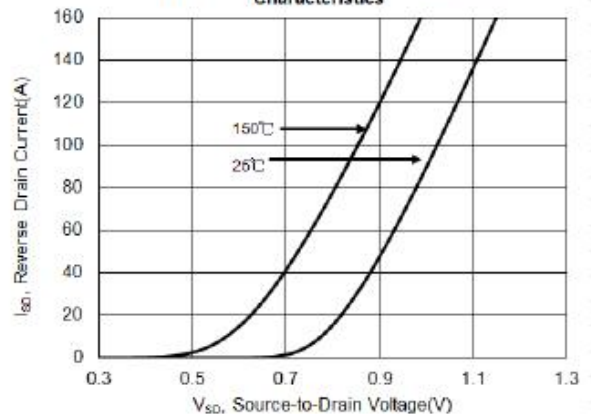


Figure 16. Typical Body Diode Transfer Characteristics



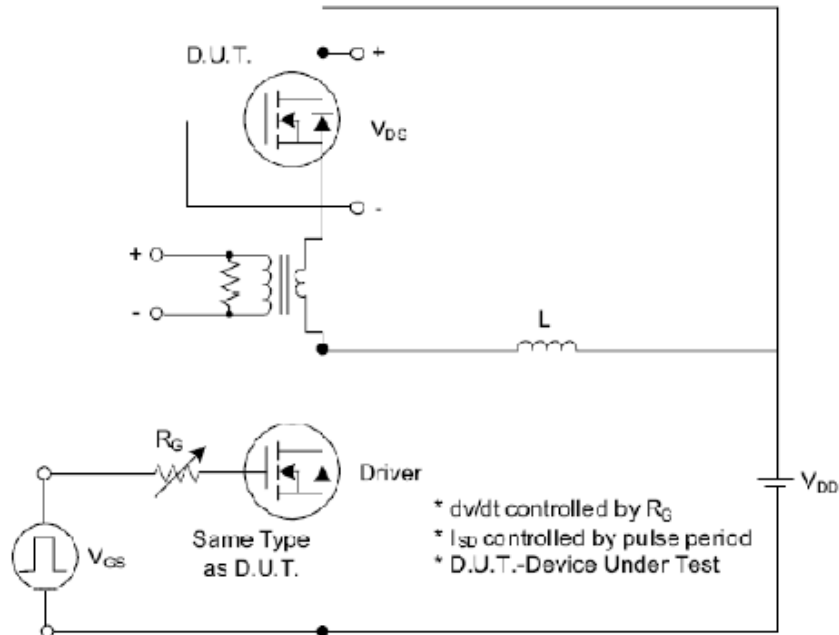


Fig. 1.1 Peak Diode Recovery dv/dt Test Circuit

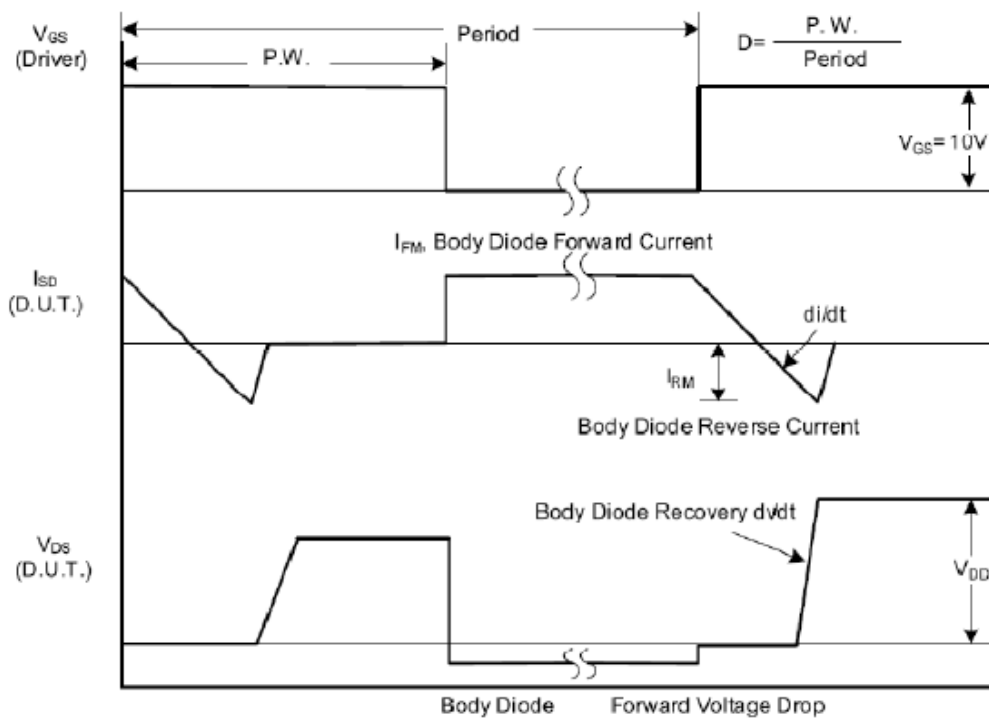


Fig. 1.2 Peak Diode Recovery dv/dt Waveforms

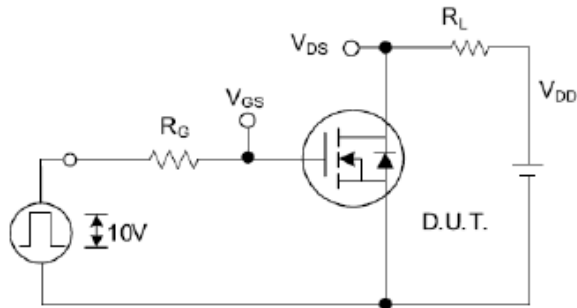


Fig. 2.1 Switching Test Circuit

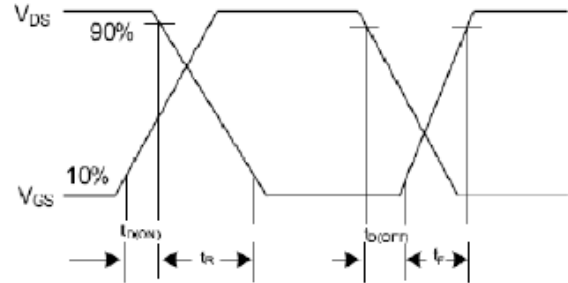


Fig. 2.2 Switching Waveforms

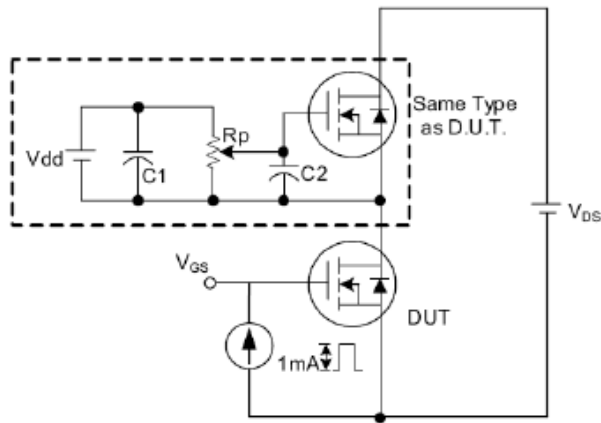


Fig. 3.1 Gate Charge Test Circuit

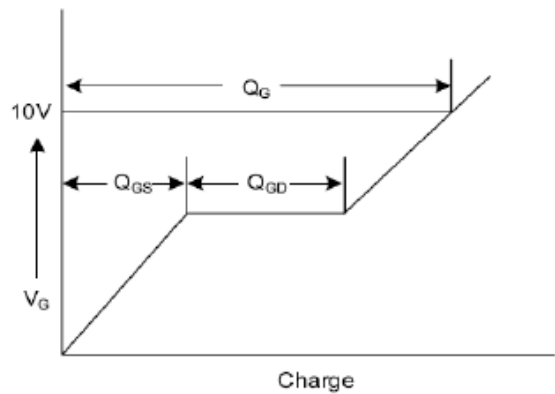


Fig. 3.2 Gate Charge Waveform

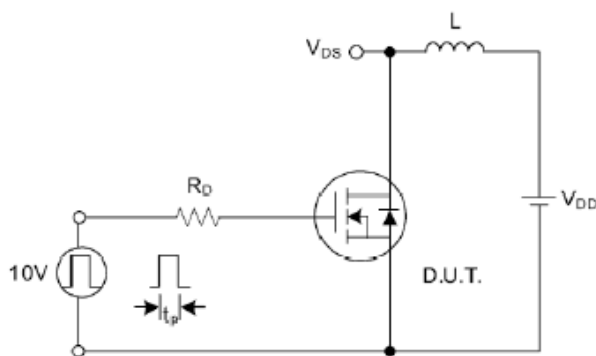


Fig. 4.1 Unclamped Inductive Switching Test Circuit

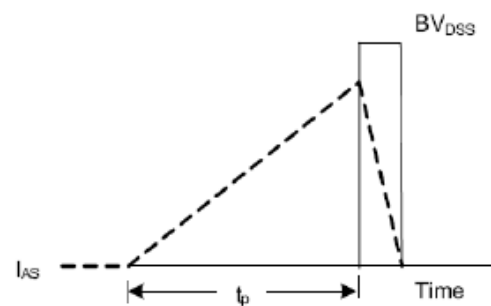


Fig. 4.2 Unclamped Inductive Switching Waveforms