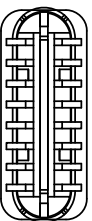
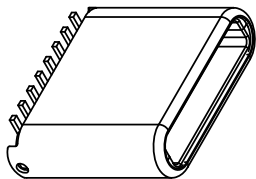
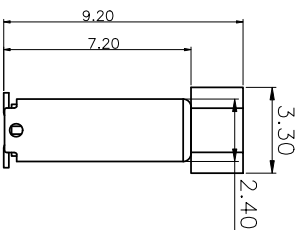
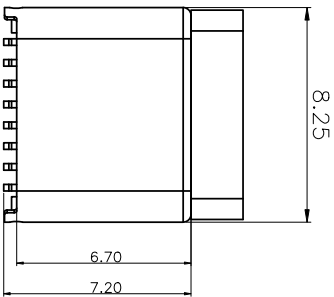
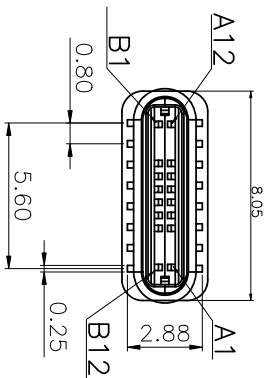
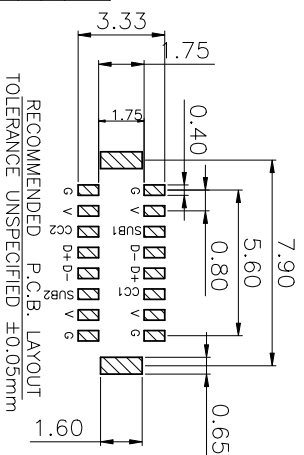


RoHS



Signal Name	Signal Name
A1 GND	B12 GND
A2 SSTXp1	B11 SSRXp1
A3 SSTXn1	B10 SSRXn1
A4 VBUS	B9 VBUS
A5 CC1	B8 SBU2
A6 Dp1	B7 Dn2
A7 Dn1	B6 Dp2
A8 SBU1	B5 CC2
A9 VBUS	B4 VBUS
A10 SSRXn2	B3 SSTXn2
A11 SSRXp2	B2 SSTXp2
A12 GND	B1 GND



RECOMMENDED P.C.B. LAYOUT
TOLERANCE UNSPECIFIED ±0.05mm

MAPX	MODIFICATION	DRW	DATE

- NOTES:
1. MATERIAL: SEE "TABLE 1";
 2. FINISH: SEE "TABLE 1";

3. ELECTRICAL :
 - 3-1. CONTACT CURRENT RATING :
3A (VBUS PIN 1.5A/PIN MAX),
3A (GND PIN 1.25A/PIN MAX), 0.25A/PIN
(OTHER PIN).
 - 3-2. INSULATION RESISTANCE :
100 MEGAOHMS MIN. AT 250VDC.
 - 3-3. DIELECTRIC WITHSTANDING VOLTAGE :
100VAC MIN.
 - 3-4. LOW LEVEL CONTACT RESISTANCE :
INITIAL: 40mΩ MAX.
AFTER 50mΩ MAX.

4. MECHANICAL CHARACTERISTICS :
 - 4-1. MATING FORCE: 5~20N ;
 - 4-2. UNMATING FORCE: 6~20N(INITIAL),
6~20N(AFTER 10000 CYCLES) ;
 - 4-3. DURABILITY : 10,000 MATING CYCLES.
 - 4-4. OPERATING TEMPERATURE : -40° C TO +80° C

NO.	DESCRIPTION	MATERIAL	COLOR	REMARK
4	PLASTIC	HIGH TEMP	BLACK/WHITE	UL 94V-0
3	Latch	STAINLESS STEEL	—	Ni Plated
2	TERMINAL	COPPER ALLOY	—	Gold Plated
1	SHELL	STAINLESS STEEL	—	Ni Plated

产品图
PRODUCT CHART DWG

公差一览表
TOLERANCE UNLESS OTHERWISE SPECIFIED

公差	范围	公差	范围
X	±0.25	X	±5.°
.X	±0.20	.X	±2.°
.XX	±0.15	.XX	±1.°
.XXX	±0.10	.XXX	±0.5°

深圳市精拓金电子有限公司
Shenzhen Jing Tuo Jin Electronics Co., Ltd.

单位	MM	制图	林属升	制图料号	918-11842021740002
比例	1:1	审核	郭治富	产品名称	TYPE-C2 0公头立式7.2/8.25脚固定脚LCP
日期	2016-09-09	核准	黄国荣	制法	黑胶SMT/16P1H+丝塞
DATE		APPD		角法	
		VER		版本	A0

