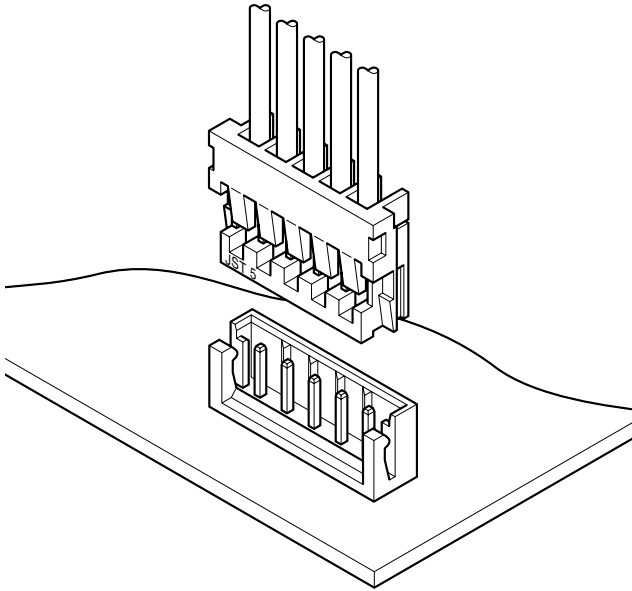


# HR CONNECTOR



**2.5mm pitch/Disconnectable Insulation displacement connectors**



**This 2.5mm pitch connector for printed circuit boards has a thin construction. The in-line method provides high-density capability to the end user.**

- Twin U-slot insulation displacement section
- Thin design
- High reliability
- Strain relief
- Interchangeability

## Specifications

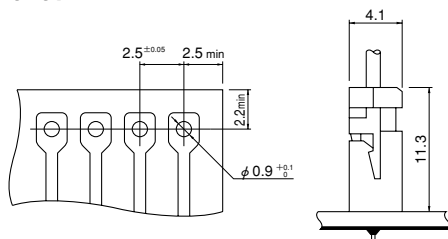
- Current rating: 2A AC, DC (AWG #24)
- Voltage rating: 250V AC, DC
- Temperature range: -25°C to +85°C  
(including temperature rise in applying electrical current)
- Contact resistance: Initial value/10m Ω max.  
After environmental testing/20m Ω max.
- Insulation resistance: 1,000M Ω min.
- Withstanding voltage: 1,000V AC/minute
- Applicable wire: UL1007(Contact JST for details regarding other UL styles.)  
AWG #28, #26, #24  
Conductor/7 strands, tin-coated  
Insulation O.D./1.0 to 1.5mm
- Applicable PC board thickness: 0.8 to 1.6mm
- \* Compliant with RoHS.
- \* Refer to "General Instruction and Notice when using Terminals and Connectors" at the end of this catalog.
- \* Contact JST for details.

## Standards

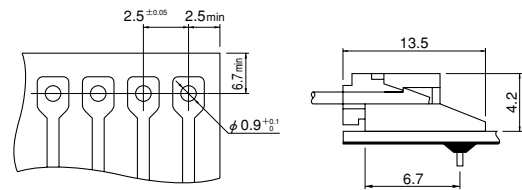
- Ⓜ Recognized E60389
- Ⓢ Certified LR20812
- Ⓡ R50082349

## PC board layout (viewed from soldering side) and Assembly layout

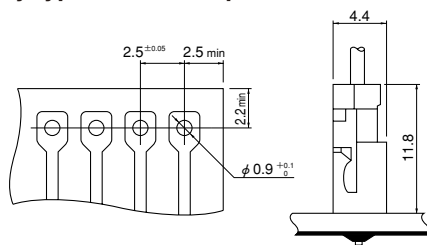
### Top entry type



### Side entry type



### Top entry type on radial-tape

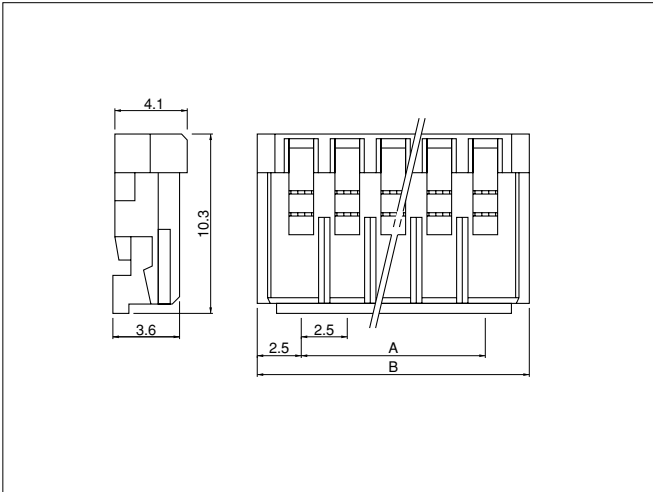


Note: 1. Tolerances are non-cumulative:  $\pm 0.05\text{mm}$  for all centers.

2. Hole dimensions differ according to the kind of PC board and piercing method. If PC boards made of hard material are used, the hole dimensions should be larger. The dimensions above should serve as a guideline. Contact JST for details.

# HR CONNECTOR

## Socket



Circuits	Model No.			Dimensions (mm)		Q'ty / box
	AWG #28 (green)	AWG #26 (natural/white)	AWG #24 (black)	A	B	
2	<b>02HR-8M-P-N</b>	<b>02HR-6S-P-N</b>	<b>02HR-4K-P-N</b>	2.5	7.5	1,000
3	<b>03HR-8M-P-N</b>	<b>03HR-6S-P-N</b>	<b>03HR-4K-P-N</b>	5.0	10.0	1,000
4	<b>04HR-8M-P-N</b>	<b>04HR-6S-P-N</b>	<b>04HR-4K-P-N</b>	7.5	12.5	1,000
5	<b>05HR-8M-P-N</b>	<b>05HR-6S-P-N</b>	<b>05HR-4K-P-N</b>	10.0	15.0	1,000
6	<b>06HR-8M-P-N</b>	<b>06HR-6S-P-N</b>	<b>06HR-4K-P-N</b>	12.5	17.5	1,000
7	<b>07HR-8M-P-N</b>	<b>07HR-6S-P-N</b>	<b>07HR-4K-P-N</b>	15.0	20.0	500
8	<b>08HR-8M-P-N</b>	<b>08HR-6S-P-N</b>	<b>08HR-4K-P-N</b>	17.5	22.5	500
9	<b>09HR-8M-P-N</b>	<b>09HR-6S-P-N</b>	<b>09HR-4K-P-N</b>	20.0	25.0	500
10	<b>10HR-8M-P-N</b>	<b>10HR-6S-P-N</b>	<b>10HR-4K-P-N</b>	22.5	27.5	500
11	<b>11HR-8M-P-N</b>	<b>11HR-6S-P-N</b>	<b>11HR-4K-P-N</b>	25.0	30.0	500
12	<b>12HR-8M-P-N</b>	<b>12HR-6S-P-N</b>	<b>12HR-4K-P-N</b>	27.5	32.5	500
13	<b>13HR-8M-P-N</b>	<b>13HR-6S-P-N</b>	<b>13HR-4K-P-N</b>	30.0	35.0	250
15	—	<b>*15HR-6S-P-N</b>	<b>*15HR-4K-P-N</b>	35.0	40.0	250

### Material and Finish

Contact: copper alloy, tin-plated (reflow treatment)  
Housing: PA 66, UL94V-0

- Note: 1. Not TÜV approved.  
2. \*Marked products are not also UL/CSA approved.

<For reference> As the color identification, the following alphabet shall be put in the underlined part. For availability, delivery and minimum order quantity, contact JST.

ex. **02HR-4K-P-N**  
standard color AWG#28: M...green, AWG#26: S...natural (white)  
AWG#24: K...black  
R...red TR...tomato red Y...yellow L...lemon yellow  
N...brown E...blue O...orange

## Shrouded header

The shrouded headers are interchangeable with those of the EH and HR crimp style connectors.