

SPECIFICATIONS

Rated (额定参数): 300V, 1.5A
 Dielectric strength (抗电强度): AC1500V/1 Minute
 Insulation Resistance (绝缘电阻): 1000MΩ Min
 Contact Resistance (接触电阻): 20mΩ Max
 Screw Torque (扭矩): 0.40Nm (3.5lb.in)
 Wire Range (线径): 12~24AWG
 Strip length (剥线长度): 4.5~5mm
 Temp. range (操作温度): -40°C~+105°C
 MAX Soldering (瞬时温度): +250°C, 5s

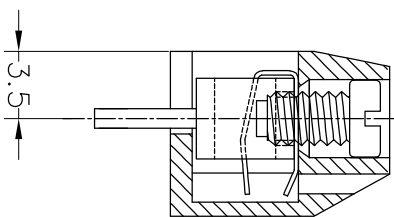
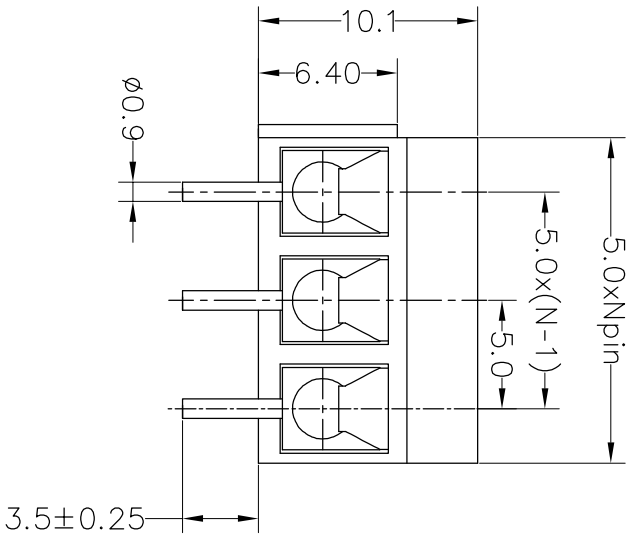
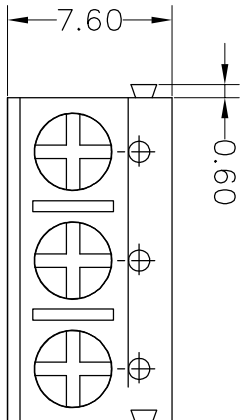
Housing Material (塑件): PA66 (UL94 V-0)
 Contact (端子): Brass, Tin plating (黄铜镀锡)
 Wire protector (弹片): Bronze (磷铜), Ni plating (镀镍)
 Screw (螺丝): M2.5, Steel, Zinc plating (钢, 镀锌)

PITCH RANGE		NOMINAL DIMENSION RANGE					
IN MM		IN MM		IN MM		IN MM	
OVER	TO	OVER	TO	OVER	TO	OVER	TO
6	10	10	30	60	100	100	150
10	24	30	60	100	150	150	150
±0.10	±0.15	±0.25	±0.30	±0.30	±0.50	±0.70	±1.00

Ordering Information

JL 301 - 500 XX X X 2

Pitch 500=5.0PH
 No. of pins 2P, 3P, 4P~24P
 Housing Color B=Black, G=Green, U=Blue, R=Red, W=White, Y=Yellow, O=Orange, E=Grey
 Packing 0=Pe, bog, T=Tube, A=Troy
 Screw 2=十字 Screw



A		B		C		D		E		F		G	
REV	DATE	MODIFICATION DESCRIPTION		CHANGE	DIM	TOL	APPROVE	SCALE	FIT	PART NO.	TITLE:		
A0	2017.09.12	NEW DRAWING			Angle	±3°	APPROVE	UNIT	mm	JL301-500XXXXX2	5.00mm Terminal Blocks Female 180°		
OPERATION		DRAW		BEN		17.09.12		SIZE		A4			
XX		±0.30						SHEET		1/1			
X.XX		±0.20		CHECK				PROJ.					
X:XXX		±0.10						PRJ.					
1		2		3		4		5		6		7	
1		2		3		4		5		6		7	

JILIN 深圳市锦凌电子有限公司
 SHENZHEN JINLING ELECTRONIC CO.,LTD
 Tel: 86-755-2997-5806/5802 Fax: 86-755-2997-5992