

SMD TCXO 2.5 x 2.0 x 0.95 mm(6PAD)



Features

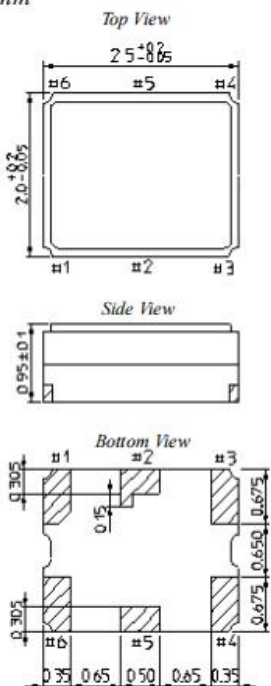
- External dimensions: 2.5 x 2.0 x 0.95mm;
- Frequency range: 16.367667 MHz, 16.368 MHz, 16.369 MHz, 19.2 MHz, 26 MHz, 33.6 MHz, 38.4 MHz, 40 MHz, 52 MHz
- Temperature Stability: ± 0.5 ppm ~ ± 2.0 ppm;
- Supply Voltage: 1.8 V ~ 3.3 V;
- Voltage Control Function Available
- Applications : GPS, WiMAX, Cellular and Wireless Communications.
- Tri-state function available;
- RoHS Compliant / Pb Free.

Electrical Specifications

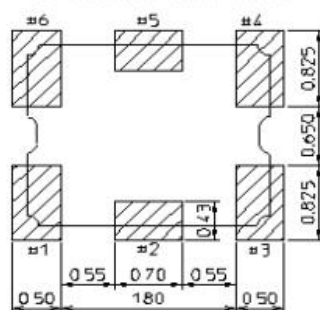
Frequency Range	13 ~ 52 MHz
Output Type	10K Ω // 10 pF
Oscillation Mode	Fundamental
Supply Voltage	1.8 ~ 3.3 V
Frequency Tolerance	± 2.5 ppm Max.
Temperature range	- 30 ~ + 85 $^{\circ}$ C
Supply Voltage	± 0.2 ppm Max.
Load sensitivity	± 0.2 ppm Max.
Clipped Sinewave Output Voltage	0.8 Vp-p typical
Start-up Time	5 ms Max
Current	2.0 mA Max.
Aging (at 25 $^{\circ}$ C)	± 1 ppm / year Max.

Dimensions

Unit: mm

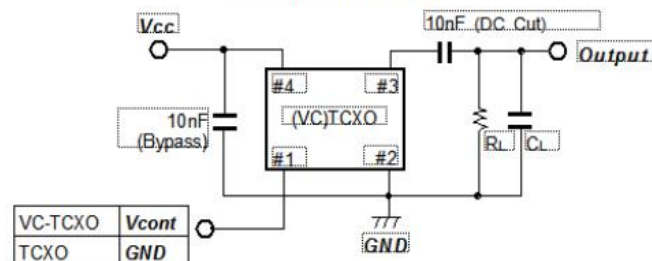


Recommended Land Pattern



Pad No.	Connection	
	VC-TCXO	TCXO
#1	V _{cont}	GND
#3	GND	GND
#4	Output	Output
#6	V _{cc}	V _{cc}
#2, #5	N.C.	N.C.

Measurement Circuit



Note:

Please connect a bypass capacitor closely to V_{cc} Pad.

Load capacitance (C_L) includes probe and test board capacitance.