

# 規格承認書

PECIFICATION FOR APPROVAL

客戶

CUSTOMER : 立創

項目

ITEM : 超声波传感器

型號

TYPE : GU1210A-40TR

描述

DESCRIPTION :  $\phi 12 \times H10 \text{mm}$   $40 \pm 1.0 \text{KHz}$  单角度  $80 \pm 15\%$  1800PF 插针 收发

客戶料號

CUSTOMER NO. :

規格書號

SPECIFICATION NO.:

版本

EDITION NO. : V1.0

日期

DATE : 20

## 客戶承認

### CUSTOMER CONFIRM AND SIGN

| 檢查<br>TESTED BY | 審核<br>CHECKED BY | 承認<br>APPROVED BY |
|-----------------|------------------|-------------------|
|                 |                  |                   |

## 東莞市贏海電子有限公司

### DONGUAN INGHAI ELECTRONICS CO.,LTD

| 製作<br>ISSUED BY | 審查<br>CHECKED BY | 確認<br>APPROVED BY |
|-----------------|------------------|-------------------|
| 周明              | 刘承成              |                   |

地址: 廣東省東莞市長安鎮上沙第五工业区新春 1 路新春科技园

電話 / TEL: 0769-83060958 傳真 / FAX: 0769-81608993

網址: [HTTP://WWW.INGHAI.COM](http://www.inghai.com)

## A. Scope

This specification applies Ultrasonic sensor **GU1210A-40TR**

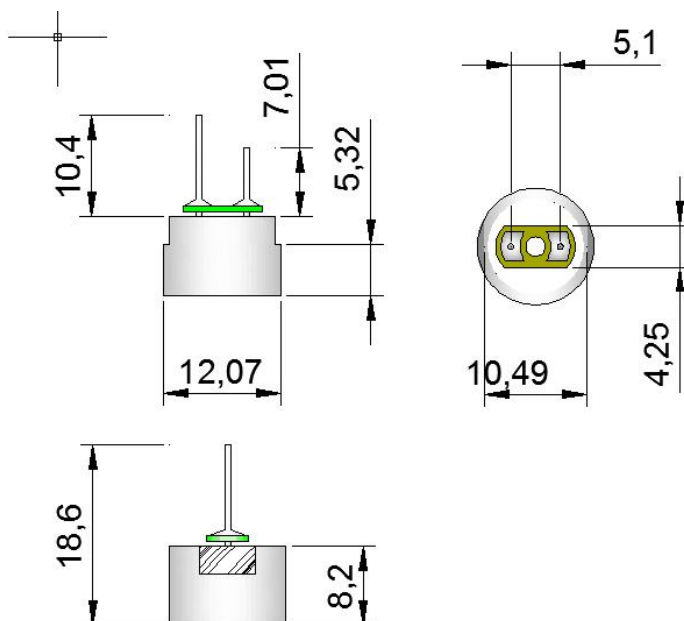
## B. Characteristics

- 1.1) Open structure and separate use
- 1.2) Compact and light weight
- 1.3) High sensitivity and sound pressure
- 1.4) Less power consumption
- 1.5) High reliability

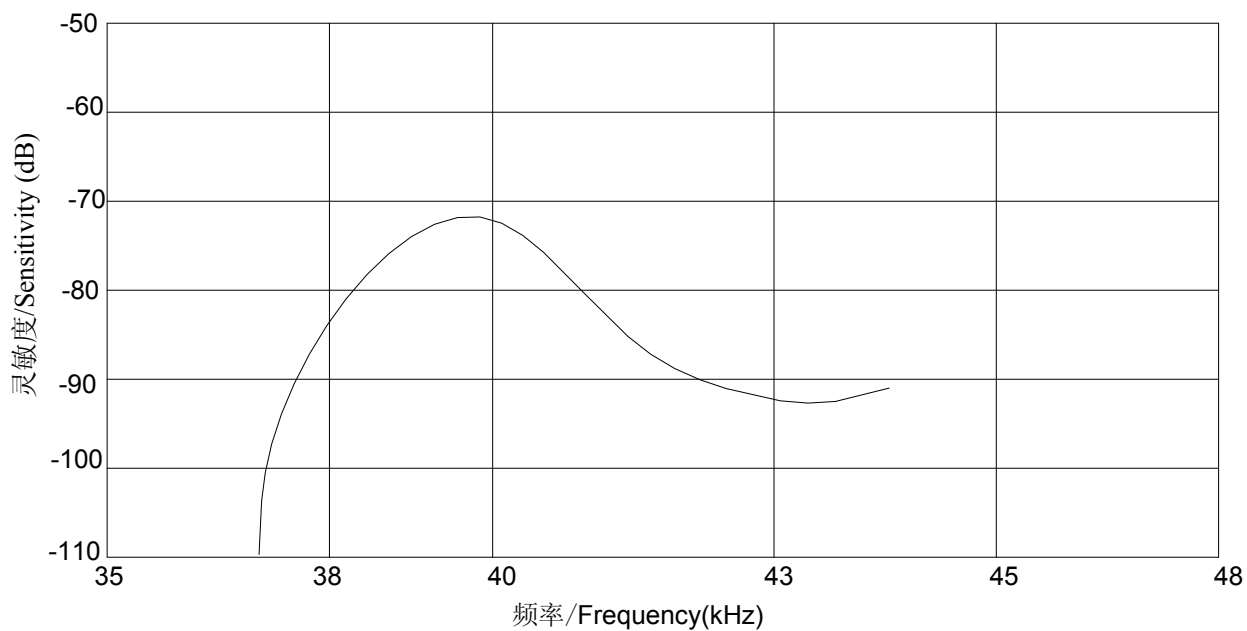
## C. Technical terms

|    |                                       |   |
|----|---------------------------------------|---|
| 1  | Center frequency(KHz)                 | 40±1.0 KHz                                  |
| 2  | S. P. L                               | ≥105 dB                                     |
| 3  | Echo Sensitivity                      | ≥250 mV                                     |
| 4  | Decay Time                            | ≤1.2 ms                                     |
| 5  | Directivity (deg) X-axis              | 80±15                                       |
| 6  | Directivity (deg) Y-axis              | 60±15                                       |
| 7  | Capacitance (pF)                      | 1800±20%                                    |
| 8  | Allowable Maximum Input Voltage(Vp-p) | 120(40KHz) Pulse width 0.5ms, interval 20ms |
| 9  | Operating Temperature(°C)             | -40~+80                                     |
| 10 | Storage temperature(°C)               | -40~+85                                     |

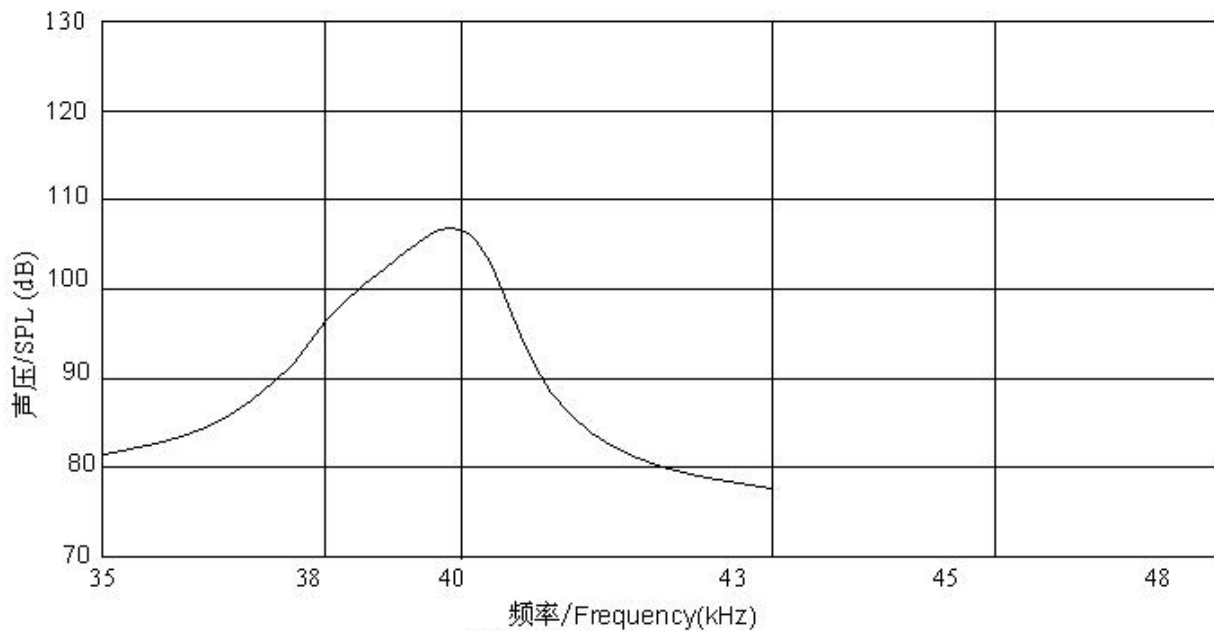
## D. Drawing 尺寸: mm



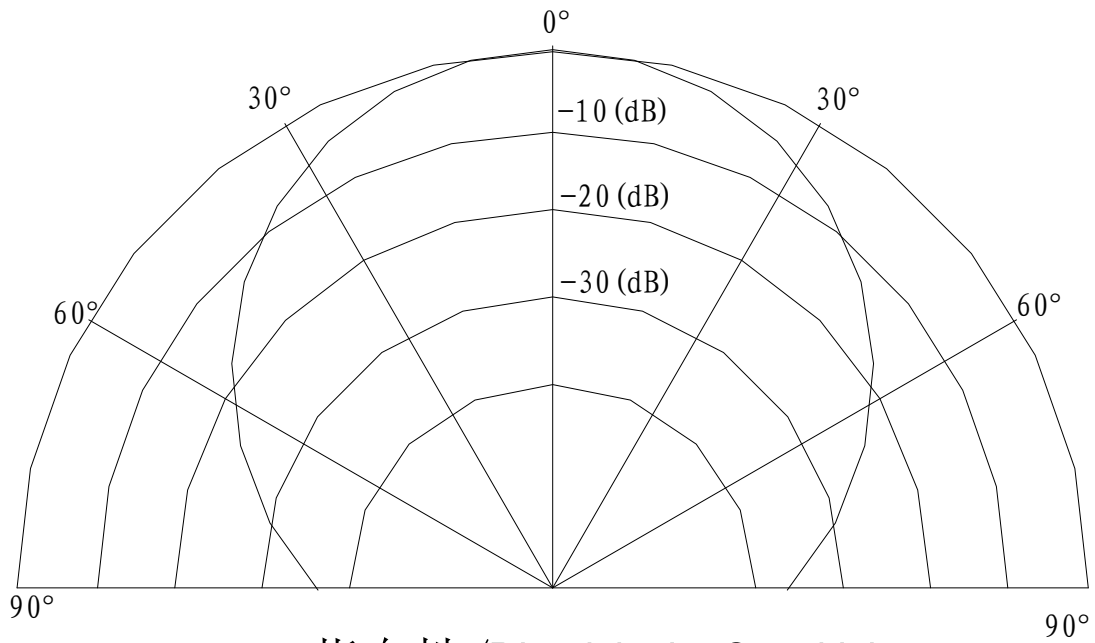
## E. Beam Pattern



灵敏度-频率特性图/Sensitivity-Freq.Characteristics



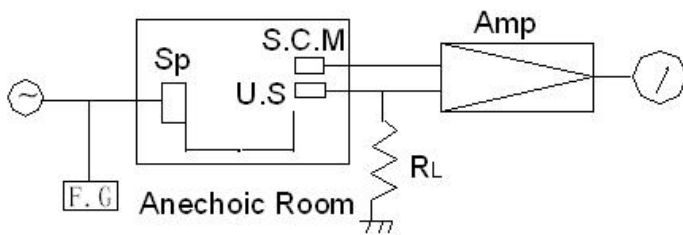
声压-频率特性图/SPL-Freq.Characteristics



指向性/Directivity in Sensitivity

## F. Test Circuit

### Receiver



RL:  $3.9K\Omega$

U.S. :Ultrasonic Sensor

S.C.M:Standard Cappacitor Microphone

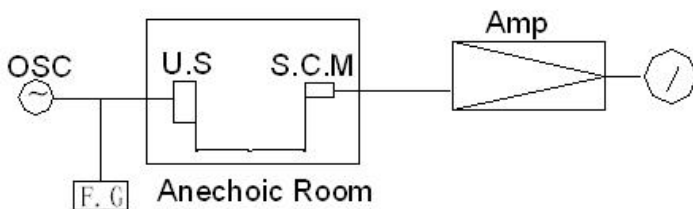
Amp. :Amplifier

OSC. :Oscillator

Sp :Tweeter

F.C. :Frequency Counter

### Transmitter



U.S. :Ultrasonic Sensor

S.C.M:Standard Cappacitor Microphone

Amp. :Amplifier

Input voltage:10Vrms

F.C. :Frequency Counter