

1 |

2 |

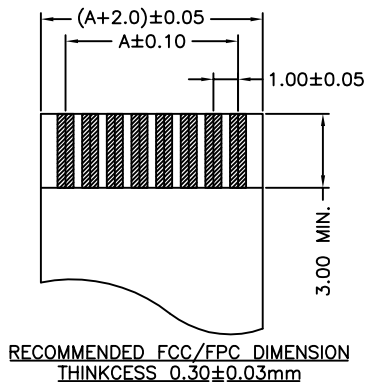
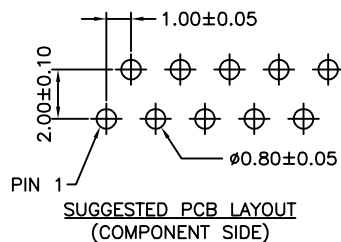
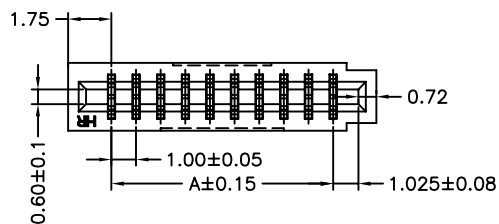
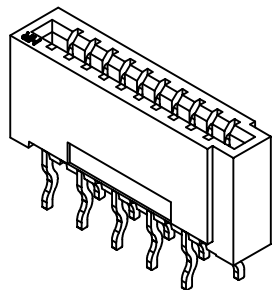
3 |

4 |

P/N LEGEND

F1004	WV	-XP	R	L	B	T1	N	00	B
①	②	③	④	⑤	⑥	⑦	⑧	⑨	⑩

① Series No.
 ② Connector type: WV=Vertical
 ③ No. of circuits
 ④ R=RoHS
 ⑤ Material: LCP ,UL94V-0
 ⑥ Color: B=Black
 ⑦ Plating code for contacts: T1=Tin-plated
 ⑧ Plating code: N=Non-plating
 ⑨ Option code: 00=Standard
 ⑩ Packing code: B=TRAY



SPECIFICATIONS
 Current Rating: 0.5A AC,DC
 Voltage Rating: 50V AC,DC
 Temperature Range: -25°C ~ +85°C
 Contact Resistance: 30mΩ Max.
 Insulation Resistance: 500MΩ Min.
 Withstanding Voltage: 500V AC/minute
 Pin Material: Phosphor Bronze/Tin-plated
 Material: LCP ,UL94V-0
 Color: Natural(Black)

Ordering Information & Dimensions

PART NO.	Dimensions		PART NO.	Dimensions	
	A	B		A	B
F1004WV-04P	3.00	6.50	F1004WV-21P	20.00	23.50
F1004WV-05P	4.00	7.50	F1004WV-22P	21.00	24.50
F1004WV-06P	5.00	8.50	F1004WV-23P	22.00	25.50
F1004WV-07P	6.00	9.50	F1004WV-24P	23.00	26.50
F1004WV-08P	7.00	10.50	F1004WV-25P	24.00	27.50
F1004WV-09P	8.00	11.50	F1004WV-26P	25.00	28.50
F1004WV-10P	9.00	12.50	F1004WV-27P	26.00	29.50
F1004WV-11P	10.00	13.50	F1004WV-28P	27.00	30.50
F1004WV-12P	11.00	14.50	F1004WV-29P	28.00	31.50
F1004WV-13P	12.00	15.50	F1004WV-30P	29.00	32.50
F1004WV-14P	13.00	16.50	F1004WV-31P	30.00	33.50
F1004WV-15P	14.00	17.50	F1004WV-32P	31.00	34.50
F1004WV-16P	15.00	18.50	F1004WV-33P	32.00	35.50
F1004WV-17P	16.00	19.50	F1004WV-34P	33.00	36.50
F1004WV-18P	17.00	20.50	F1004WV-35P	34.00	37.50
F1004WV-19P	18.00	21.50	F1004WV-36P	35.00	38.50
F1004WV-20P	19.00	22.50			

A

B

C

D

A

B

C

D

Notes:
 1. ● 已開發Pin數.

				UNIT	SCALE	SHEET	TITLE:
				mm	1 : 1	1 of 1	
DRAWN BY		APPROVED BY		1.00mm PITCH FFC/FPC CONNECTOR 180° DIP TYPE, NON-ZIF			
王亮		翁志昇					
2013.01.18		2013.01.18					
GENERAL TOLERANCE				DRAW NO. :			
AO	NEW RELEASE	2013.05.24	王亮	X. X±0.25	ANGLE±	F1004WV-XPRXXXXXXXXXX	
REV.	DESCRIPTION	DATE	NAME	X. XX±0.15		REV. AO	
				X. XXX±0.05			

1 |

2 |

3 |

4 |