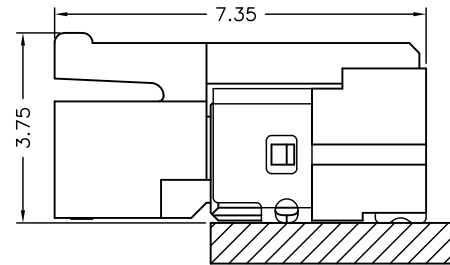
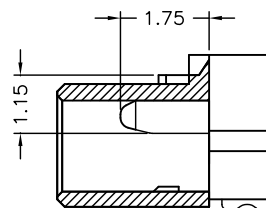
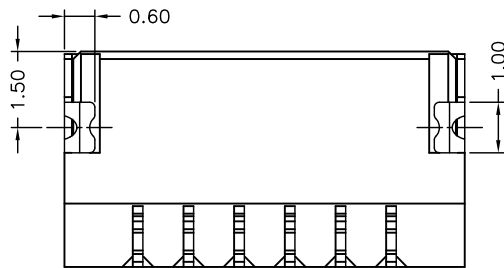
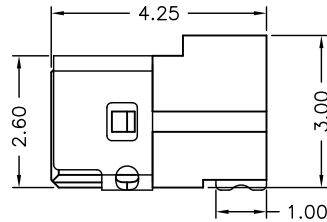
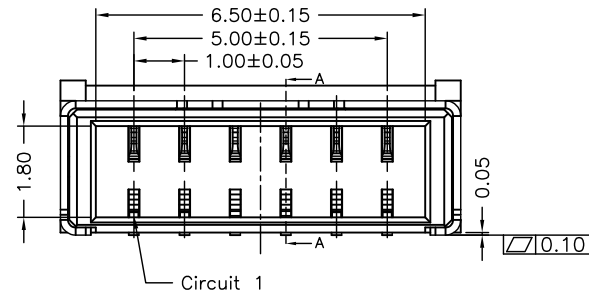


P/N LEGEND

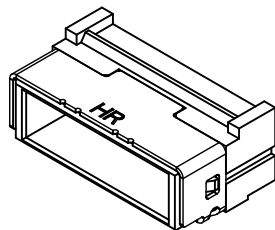
A1024	WRC-S-06P	N	L	N	T1	G	00	R
①	②	③	④	⑤	⑥	⑦	⑧	⑨
⑩	⑪							

① Series No.
② Connector type: WRC=Right angle C Type
③ Mounting type: S=SMT without boss
④ No. of circuits
⑤ N=Halogen Free
⑥ Material: L=LCP
⑦ Color: N=Natural(Beige)
⑧ Plating code for contacts: T1=Matte Tin-plated
⑨ Plating code for solder tabs: G=Gold-flash
⑩ Option code: 00=Standard
⑪ Packing code: R=Tape & Reel



SPECIFICATIONS

Current Rating: 1A AC,DC
Voltage Rating: 50V AC,DC
Temperature Range: -25°C ~ +85°C
Contact Resistance: 20mΩ Max.
Insulation Resistance: 100MΩ Min.
Withstanding Voltage: 500V AC/minute
Pin Material: Phosphor Bronze/Tin-plated
Solder Tabs: Brass/Matte Tin-plated
Wafer: LCP,UL94V-0
Color: Natural(Beige)



				燦達電子工業股份有限公司 JOINT TECH ELECTRONIC IND. CO., LTD.	
		UNIT	SCALE	SHEET	TITLE:
		mm	1 : 1	1 of 2	1.00mm PITCH 90° WAFER-SMT TYPE,
		DRAWN BY 陳彥兆 2011.04.19	APPROVED BY 翁志昇 2011.04.19		
A2	EN1409050002	2014.09.24	唐騰鳳	GENERAL TOLERANCE	
A1	EN1109080399	2011.12.15	陳敏		
A0	NEW RELEASE	2011.04.19	陳敏	ANGLE±	
REV.	DESCRIPTION	DATE	NAME		
				X.X±0.25	
				X.XX±0.15	
				X.XXX±0.05	
				DRAW NO. : A1024WRC-S-XPXXXXXXX	
				REV. A2	