



晶体管 TRANSISTOR D965A

主要参数 MAIN CHARACTERISTICS

| | |
|------------------|-------|
| I _c | 5A |
| V _{CEO} | 20V |
| P _c | 750mW |

产品特性 FEATURES

| | |
|---------|----------------------|
| 硅外延 | Epitaxial silicon |
| 高开关速度 | High switching speed |
| RoHS 产品 | RoHS product |

用途 APPLICATIONS

| | |
|----------|------------------------------------|
| 高频开关电源 | High frequency switch power supply |
| 一般功率放大电路 | Commonly power amplifier circuit |
| 高频功率变换 | High frequency power transform |

封装形式 Package



绝对最大额定值 ABSOLUTE RATINGS (T_c=25°C)

| 项目 Parameter | 符号 Symbol | 数值 Value | 单位 Unit |
|---|------------------|-------------|------------|
| 集电极—基极直流电压 Collector- Base Voltage (I _E =0) | V _{CB0} | 40 | V |
| 集电极—发射极直流电压 Collector- Emitter Voltage (I _B =0) | V _{CEO} | 20 | V |
| 发射极—基极直流电压 Emitter-Base Voltage (I _C =0) | V _{EB0} | 7.0 | V |
| 最大集电极直流电流 Collector Current (DC) | I _c | 5.0 | A |
| 最大集电极耗散功率 Total Dissipation (TO-92) | P _c | 750 | mW |
| 最高结温 Junction Temperature | T _j | 150 | °C |
| 贮存温度 Storage Temperature | T _{stg} | -55~+150 | °C |

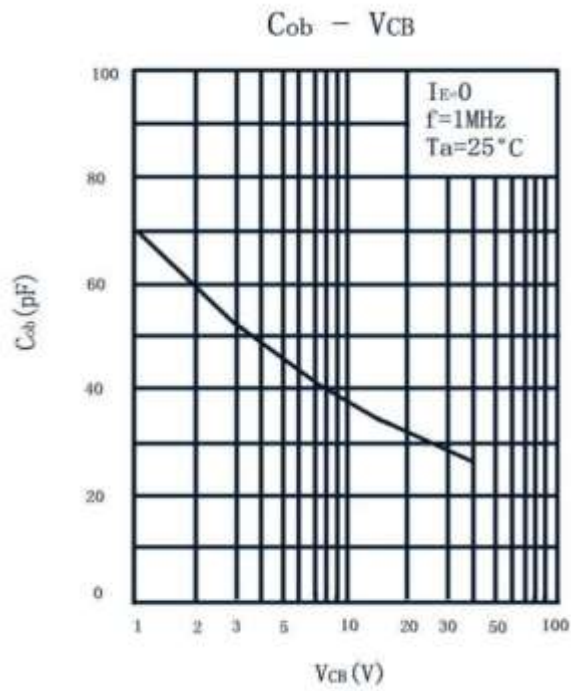
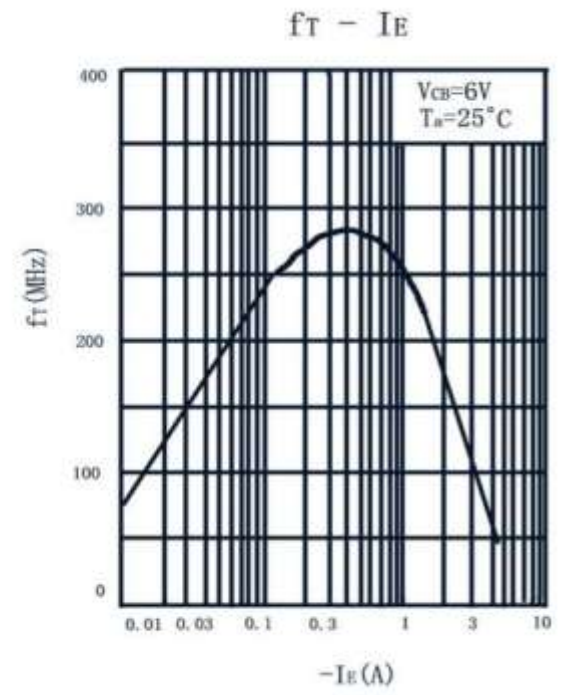
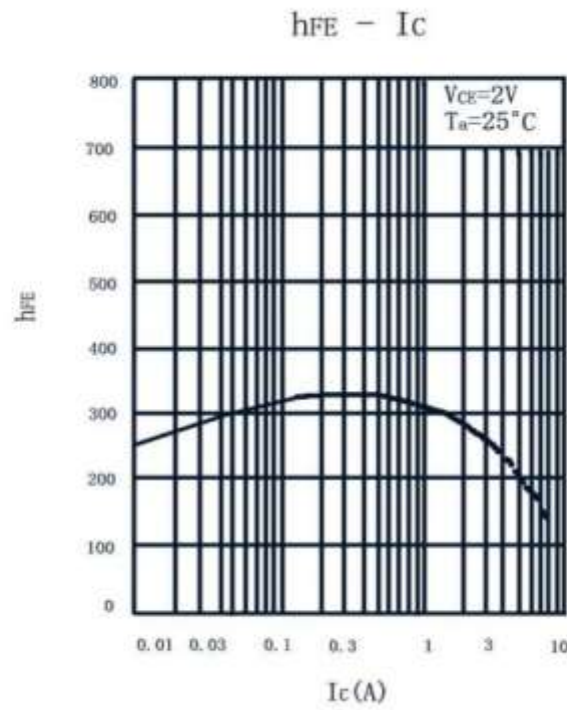
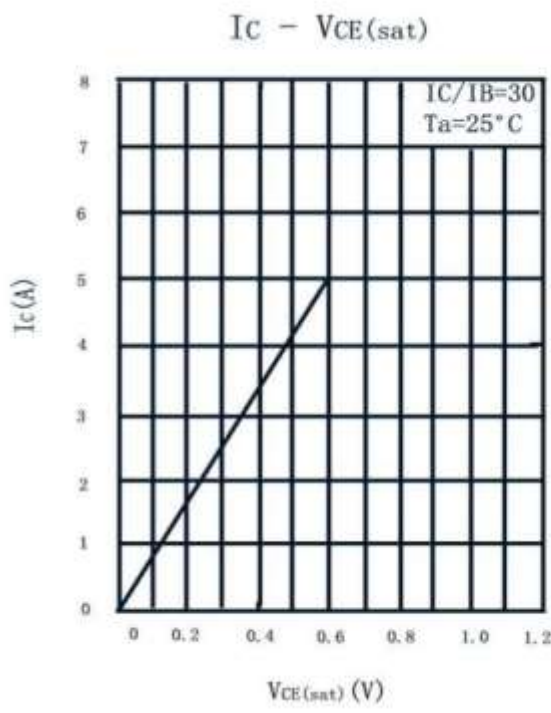
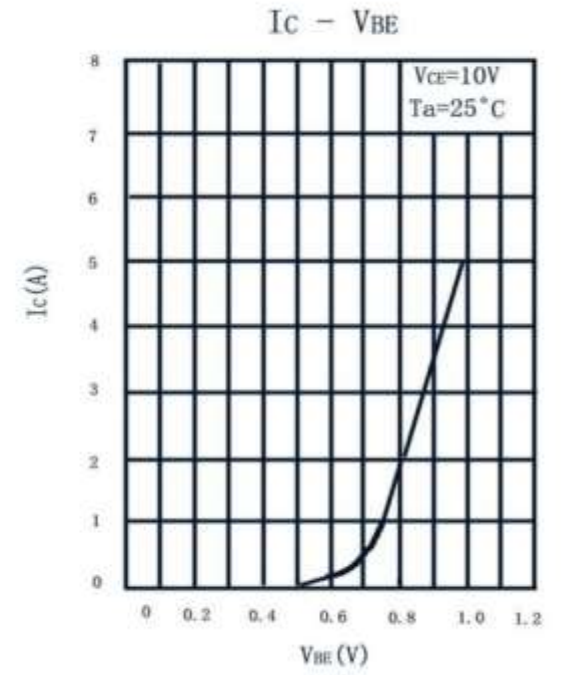
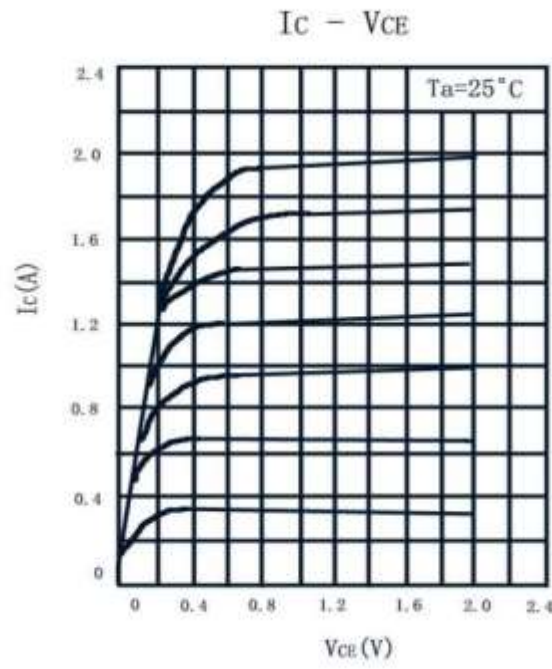
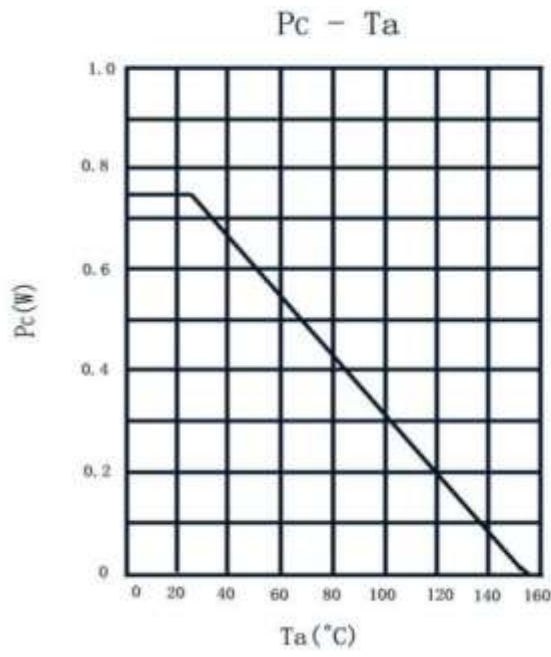
电特性 ELECTRICAL CHARACTERISTICS

| 项目 Parameter | 测试条件 Tests conditions | 最小值 (min) | 典型值 (typ) | 最大值 (max) | 单位 Unit |
|---------------|-----------------------|-----------|-----------|-----------|---------|
| $V(BR)_{CBO}$ | $I_C=10\mu A, I_E=0$ | 40 | - | - | V |
| $V(BR)_{CEO}$ | $I_C=1.0mA, I_B=0$ | 20 | - | - | V |
| $V(BR)_{EBO}$ | $I_E=10\mu A, I_C=0$ | 7 | - | - | V |
| I_{CBO} | $V_{CB}=10V, I_E=0$ | - | - | 0.1 | μA |
| I_{EBO} | $V_{BE}=7V, I_C=0$ | - | - | 0.1 | μA |
| $h_{FE} (1)$ | $V_{CE}=2V, I_C=0.5A$ | 180 | - | 1000 | - |
| $h_{FE} (2)$ | $V_{CE}=2V, I_C=2.0A$ | 150 | - | - | - |
| $V_{CE(sat)}$ | $I_C=3A, I_B=0.1A$ | - | - | 1.0 | V |
| f_T | $V_{CE}=6V, I_C=50mA$ | - | 150 | - | MHz |

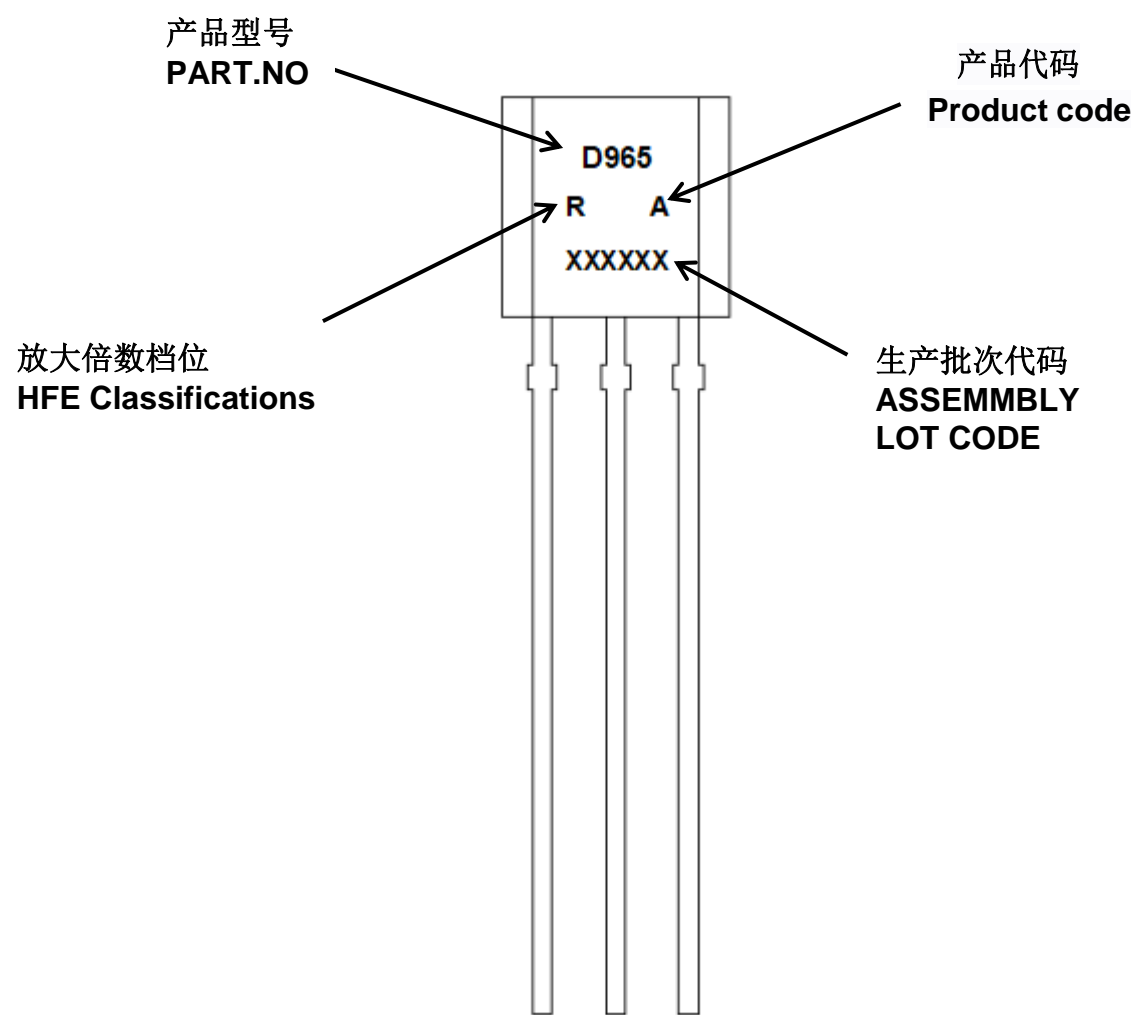
放大倍数 h_{FE} Classifications

| h_{FE} Classifications Symbol | P | Q | R | S |
|---------------------------------|---------|---------|---------|----------|
| h_{FE} Range | 180-270 | 230-380 | 300-600 | 560-1000 |

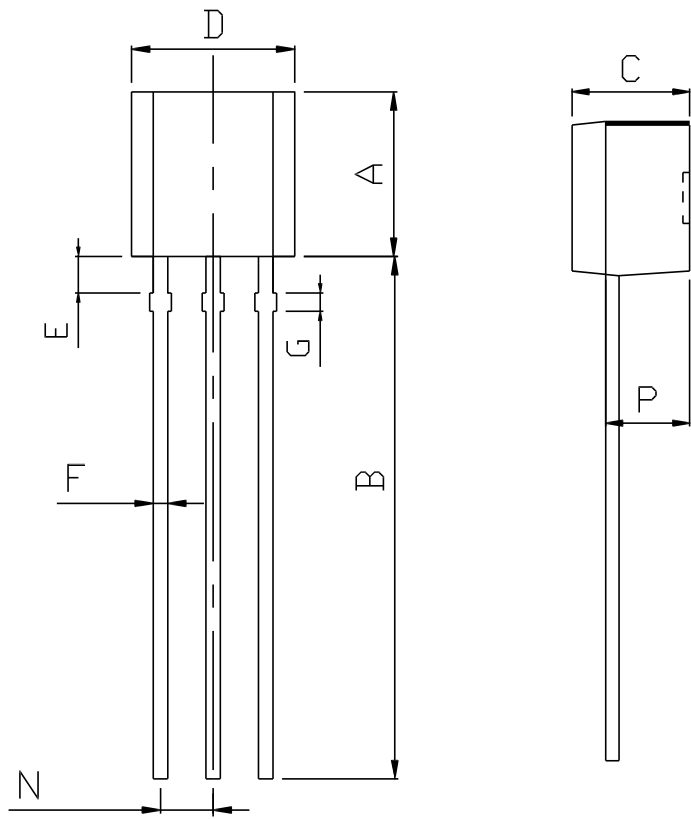
典型特性曲线 Electrical Characteristics



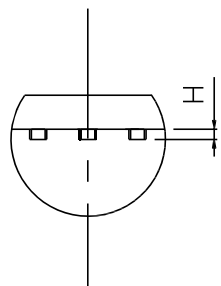
印记 Marking:



外形尺寸: Package Dimension



| DIM | MILLIMETERS |
|-----|-------------|
| A | 4.55+0.20 |
| B | 14.50±0.30 |
| C | 3.54±0.20 |
| D | 4.56±0.20 |
| E | 1.30±0.20 |
| F | 0.46±0.20 |
| G | 0.50±0.10 |
| H | 0.32±0.10 |
| N | 1.30±0.20 |
| P | 2.52±0.20 |



(Units: mm)