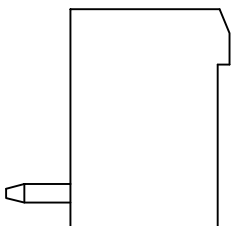
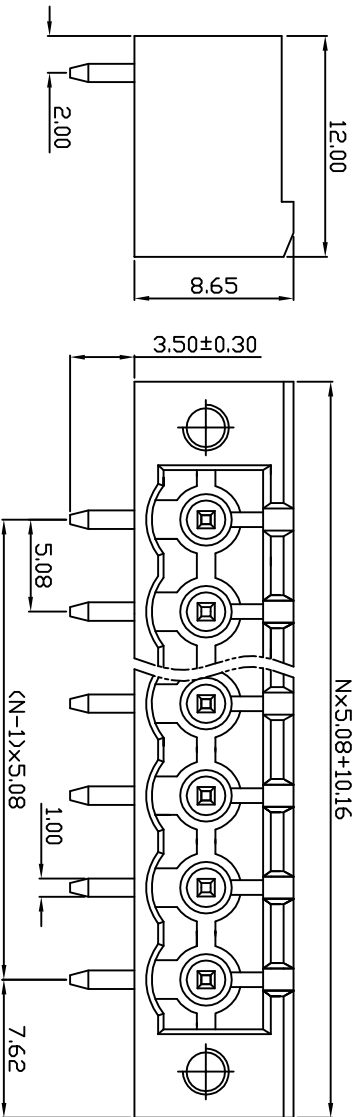
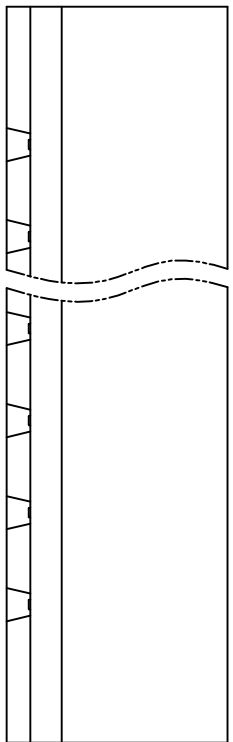
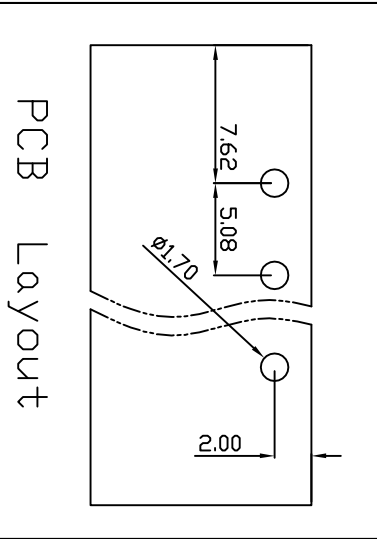
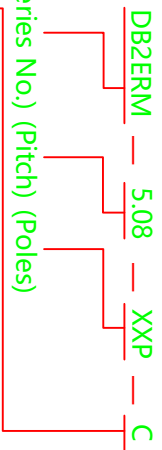


linear dimension (Tolerances Standard GB/T 14486-2008)	—									
variable range	6 to 6	over 10 to 10	over 30 to 30	over 60 to 60	over 100 to 100	over 160 to 160	over 10 to 10	over 10 to 100	over 100 to 100	over 100 to 100
tolerance	±0.20	±0.30	±0.50	±0.70	±1.00	±1.30	±1.60	0.10	0.30	0.60



UL/CUL 技术参数	UL/CUL Technical Data			
等级	Use Group	B	C	D
额定电压	Rated Voltage	V <sub>I</sub>	300	300
额定电流	Rated Current	I <sub>A</sub>	15	10
接线范围	Wire Range	-		
单/多芯线	Solid/Stranded	[AWG]		
耐电压	Withstanding Voltage	1600V/Min		
IEC 技术参数				
IEC 技术参数	IEC Technical Data			
过电压类别	Overvoltage Category	III	III	II
污染等级	Contamination Class	3	2	2
额定电压	Rated Voltage	V <sub>I</sub>	250	320
额定电流	Rated Current	I <sub>A</sub>	15	15
额定冲击电压	Impulse withstand voltage	[kV]	4	4
导线截面积	Conductor cross section	-		
硬质/柔性导线	Solid/flexible	[mm <sup>2</sup> ]		
材料	Material	-		
绝缘材料	Insulation Material	PA66		
阻燃等级	Inflammability	UL94V-0		
导体材料	Conductor Material	铜合金 Copper alloy		
导体表面处理	Conductive Coating	镀锡 Sn Plated		
一般参数	Other Data	-		
间距	Pitch	[mm]	5.08	
极数	Poles	[P]	02-24	
剥线长度	Stripping Length	[mm]	-	
螺丝	Screw/Torque	[N·m]	-	
工作温度	Operating temperatur	[°C]	-40~+105	
引脚尺寸	Pin Dimensions	[mm]	1.0x1.0	
PCB板孔径	PCB Hole Diameter	[mm]	1.70	



(Color) : 1.(Green) 2.(Black) 3.(Blue) 4.(Clear) 5.(Gray)  
6.(Orange) 7.(Red) 8.(White) 9.(Yellow)

APPD: J.Ting Chen 2022.4.6

CHKD: Duck Moo 2022.4.6

DRFT: Steven Lu 2022.4.6

NAME:

DB2ERM-5.08-XXP-C

**DORABO**

宁波地博电气有限公司  
Ningbo Dorabo Electric CO., Ltd

SIZE: A4

mm  
inch

REV

T0-1

TYPE: CUSTOMER\_DRAWING

SCALE: 1:1

SHEET

1/1