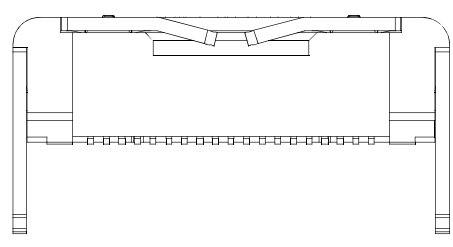
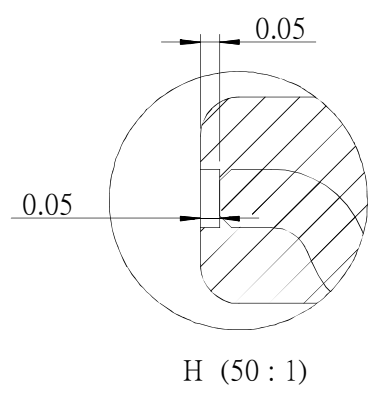
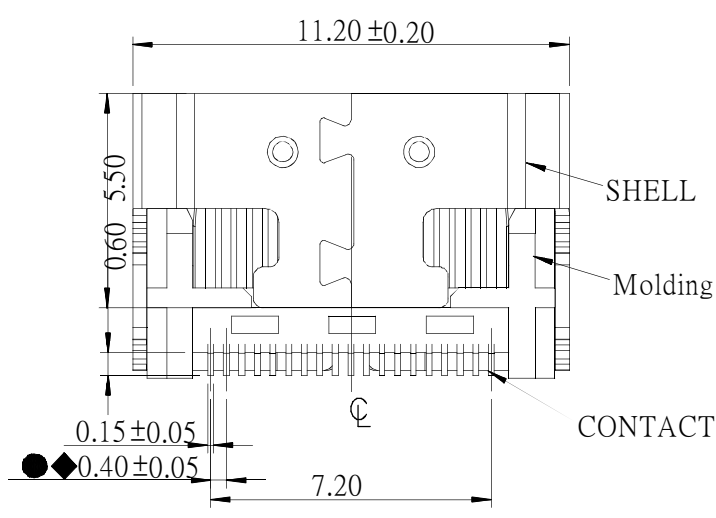
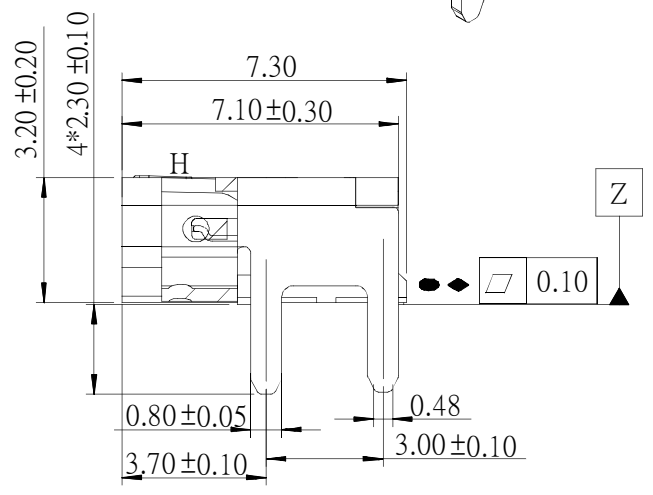
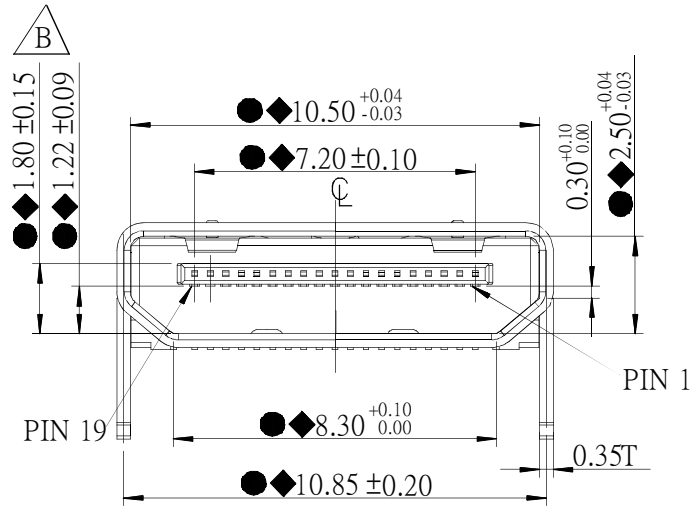
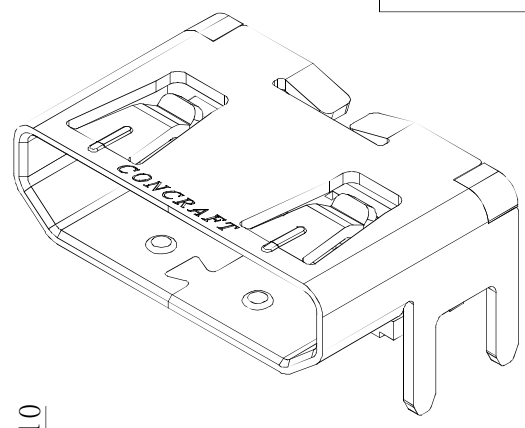
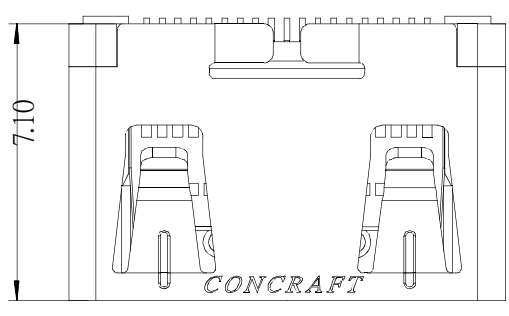
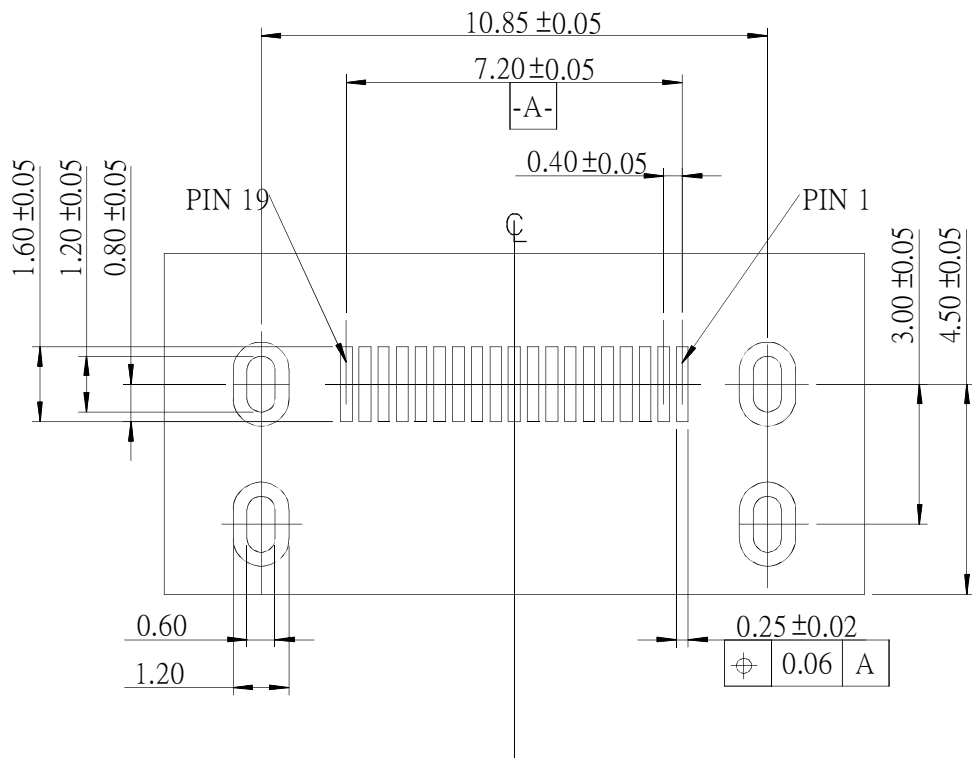


Halogen Free



				GENERAL TOLERANCE		DRAW:	PART NO: 128AA19HB□N	
				X. ±0.30	X.° ±2.00°	CHECKED:	TITLE: HDMI C TYPE SMT	
				.X ±0.20	.X.° ±1.00°		APPROVE:	DRAWING NO: 128AA19HB□N
				.XX ±0.10	.XX.° ±0.50°			
B	E130580A	Cookie	12/10/2013	UNITS: mm	DATE: 12/10/2013			
A	E120325A	ALAN	2012/07/31					
REV.	ECO NO.	DRAW	DATE					
MATERIAL:	FINISH:	SCALE: 5:1	SHEET: 1/2					REV. B



**NOTE:**

1. SOLDER TAIL TO BE WITHIN 0.05 UPWARD AND 0.15 DOWNWARD FROM Z-DATUM PLACE, AND COPLANARITY OF SOLDER TAILS TO BE WITHIN 0.10 MEASUREMENT POINT SOLDER TAILS TIP

**1. INSPECTION SYMBOL:**

- : MANUFACTURER INSPECTION
- ◆ : Q.C INSPECTION

**2. MATERIAL:**

MOLDING: THERMOPLASTIC, COLOR: BLACK, UL-94V0  
 SHELL: COPPER ALLOY, T=0.35 MM  
 TERMINAL: COPPER ALLOY, T=0.15 MM

**3. FINISH:**

CONTACT: GOLD FLASH PLATE ON MATING SURFACE,  
 GOLD FLASH PLATE ON SOLDER TAIL,  
 ALL OVER NICKEL 50u" Min UNDER PLATE  
 SHELL: ALL OVER NICKEL 50u" Min UNDER PLATE

**4. HSF: HSF CONCRAFT LEVEL 1**

128AA19HB□N

A=3u" Au  
 B=10u" Au  
 C=15u" Au  
 D=30u" Au

				GENERAL TOLERANCE		DRAW:	PART NO:
				X. ±0.30	X.° ± 2.00°	CHECKED:	128AA19HB□N
				.X ±0.20	.X° ± 1.00°		TITLE: HDMI C TYPE SMT
				.XX ±0.10	.XX° ± 0.50°		
B	E130580A	Cookie	12/10/2013	.XXX ±0.05		APPROVE:	DRAWING NO:
A	E120325A	ALAN	2012/07/31	UNITS: mm	DATE: 12/10/2013		128AA19HB□N
REV.	ECO NO.	DRAW.	DATE				
MATERIAL:		FINISH:	SCALE: 5 : 1				