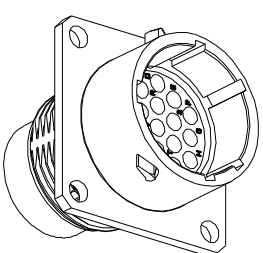
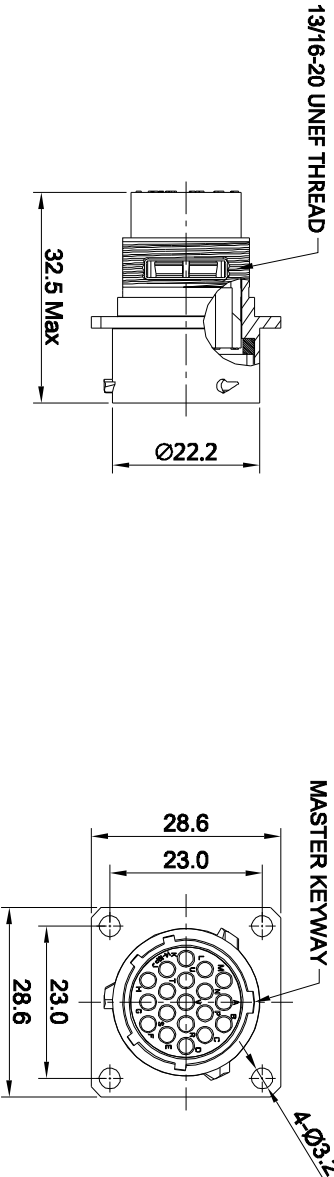
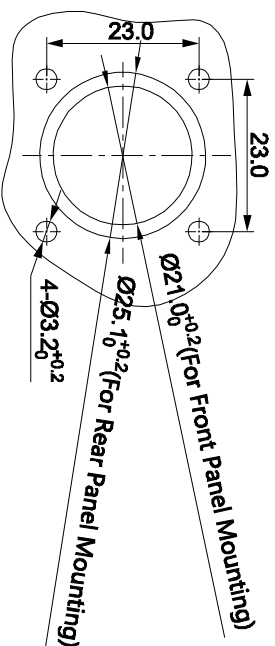


REVISIONS				
REV	ECO	DESCRIPTION	DATE	BY APPR
B1	-	RELEASED DRAWING	JUN-19-2014	BEN TOMMY



NOTES : (UNLESS OTHERWISE SPECIFIED)

1. MATERIAL :
SHELL : ZINC ALLOY , NICKEL PLATED.
INSERT : THERMOPLASTIC , UL94 V-0.
SEAL GASKET : NBR/SILICONE RUBBER.
2. SPECIFICATIONS :
2.1 RATED CURRENT :
2.1.1 STAMPED CONTACT 5A (MAX).
2.1.2 MACHINED CONTACT 7.5A (MAX).
2.2 RATED VOLTAGE : 150V (AC/DC).
2.3 OPERATING TEMPERATURE : SEE CHART.
2.4 DIELECTRIC WITHSTANDING VOLTAGE : LESS THAN 2 MILLIAMPS CURRENT LEAKAGE@1500 VOLTS AC.
2.5 INSULATION RESISTANCE : 5000 MEGOHMS MIN.
2.6 IP--CLASS : IP67.
2.7 MATING CYCLES DURABILITY : 500 CYCLES(MIN).
2.8 ROHS COMPLIANT.
3. SUITABLE CONTACTS : 20# CONTACTS.
4. ALL DIMENSIONS ARE FOR REFERENCE USE ONLY.



KEY POS	PART NUMBER
N	RT0W01419PN RT0W01419PN03
W	RT0W01419PW RT0W01419PW03
X	RT0W01419PX RT0W01419PX03
Y	RT0W01419PY RT0W01419PY03
Z	RT0W01419PZ RT0W01419PZ03

PANEL CUT OUT REFERENCE

QUANTITY	SEE PART NUMBER CHART	PART NUMBER		DESCRIPTION	ITEM
<p>MATERIALS LIST</p> <p>UNLESS OTHERWISE SPECIFIED</p> <p>1) ALL DIMENSIONS ARE IN MILLIMETERS UNLESS OTHERWISE SPECIFIED.</p> <p>2) Tolerances are as follows: 1 Pk. DEC 2d 20 Precision 5/164 1 Pk. DEC 2d 20 Angles 51 3 Pk. DEC 2d 20 Angles 51</p> <p>3) Note reference = </p> <p>MATERIAL SPECIFICATIONS:</p> <p>CUSTOMER:</p> <p>THIS DRAWING IS SUPPLIED FOR SPECIFICATIONS AND PERFORMANCE DATA. THE DRAWING IS NOT TO BE USED FOR REPRODUCTION OR REPRODUCTION IN ANY MANNER. ALL MANUFACTURING VARIATION.</p> <p>SCALE: NONE</p>					
<p>SIGNATURES</p> <p>DRAWN: BBI</p> <p>CHECKED: JIM/SMH</p> <p>ENGINEER:</p> <p>APPROVAL:</p>		<p>DATE: JUN-19-14</p> <p>ECO-MATE RECEPTACLE, PIN, 19POS, SIZE 14.</p> <p>Shine Systems - www.amphenol-shine.com 44724 Money Drive Clinton Township, MI 48038</p>			
<p>PROCESS SPECIFICATIONS:</p> <p>NEXT ASST:</p>		<p>SIZE: B</p> <p>TYPE: C-</p> <p>DWG NO: RT0W01419P##</p> <p>REVISION: B1</p>			

FILE:

ECO-MATE RECEPTACLE.PIN, 19POS, SIZE 14.

DWG NO:

RT0W01419P#

REV: B1

SH: 1

QF: 1