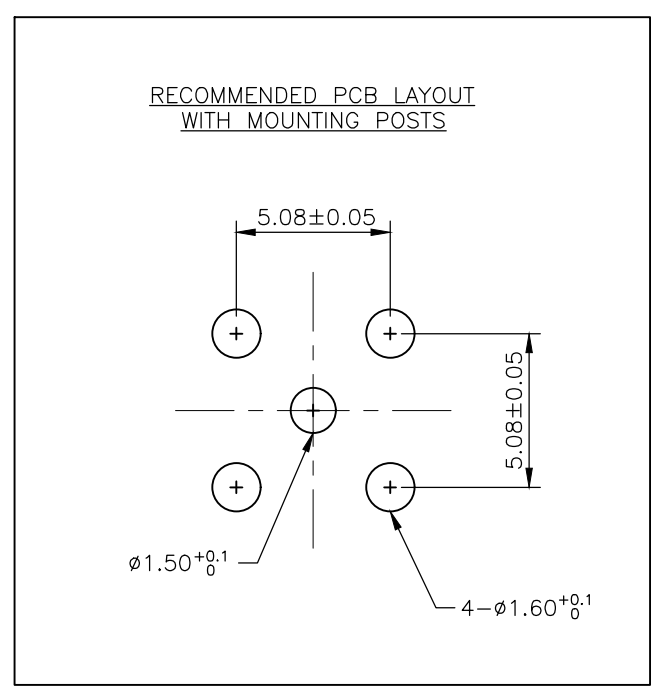
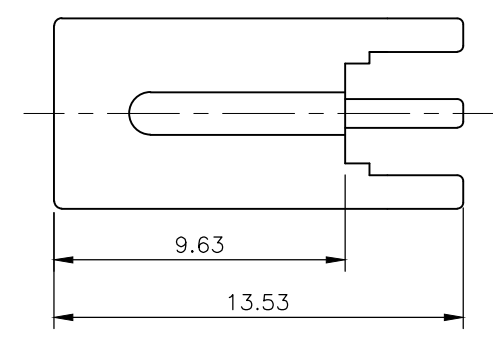
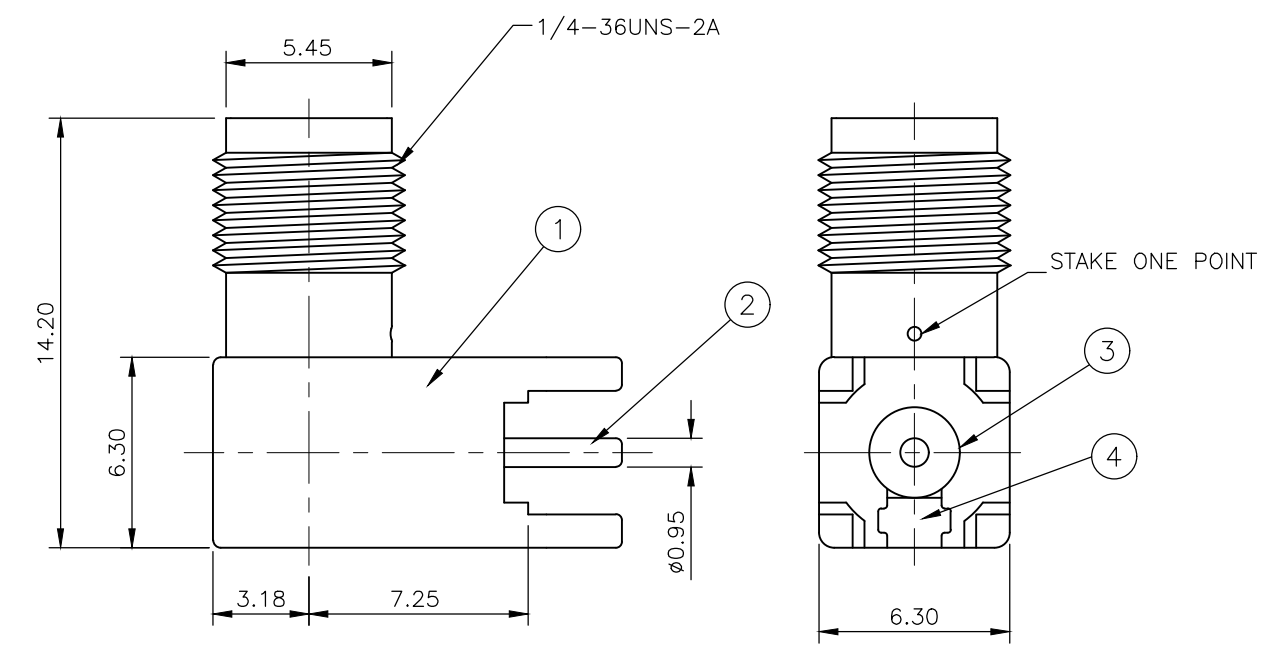


THIS DRAWING IS UNPUBLISHED. RELEASED FOR PUBLICATION JUNE ,2004.  
 © COPYRIGHT 2004 By - ALL RIGHTS RESERVED.

P	LTR	DESCRIPTION	DATE	DWN	APVD
	D1	ECR-19-005863	06AUG2019	ED	RS

- NOTES**
- 1 SINGLE PACK IN ACCORDANCE WITH TE SPEC 107-3275
  - 2 100 TRAY PACK IN ACCORDANCE WITH TE SPEC 107-3275
  - 3 Au PLATING
  - 4. FOR TECHNICAL DATA REFER TO YOUR LOCAL TE CONNECTIVITY SALES OFFICE
  - 5. ALL DIMENSIONS ARE NOMINAL FOR REFERENCE ONLY UNLESS OTHERWISE STATED
  - 6. PACKAGING, 350/REEL X 4 = 1400 PER BOX



QTY	DESCRIPTION	MATERIAL	ITEM
1	CAP	ZINC ALLOY	4
1	INSULATOR	PTFE	3
1	CONTACT	BERYLLIUM COPPER	2
1	BODY	ZINC ALLOY	1
5	MATERIAL		
25			
15			
0			

THIS DRAWING IS A CONTROLLED DOCUMENT.		DWN ANSON MA 17MAR09	<b>STE</b> TE Connectivity	
DIMENSIONS: mm		CHK RITA ZUO 17MAR09		
TOLERANCES UNLESS OTHERWISE SPECIFIED:		APVD BOB ZHAO 17MAR09	NAME	
0 PLC ± 0.5		PRODUCT SPEC	SMA RIGHT ANGLE PCB SOCKET DIE CAST	
1 PLC ± 0.3		108-112000	-	
2 PLC ± 0.2		APPLICATION SPEC	-	
3 PLC ± -		SIZE	CAGE CODE	DRAWING NO
4 PLC ± -		0.000000	A300779	C-1814400
ANGLES ± -		WEIGHT	RESTRICTED TO	
FINISH -		0.000000	-	
MATERIAL SEE TABLE		CUSTOMER DRAWING		SCALE NTS
		SHEET 1 OF 2		REV D1

THIS DRAWING IS UNPUBLISHED.

RELEASED FOR PUBLICATION , JUNE 2004

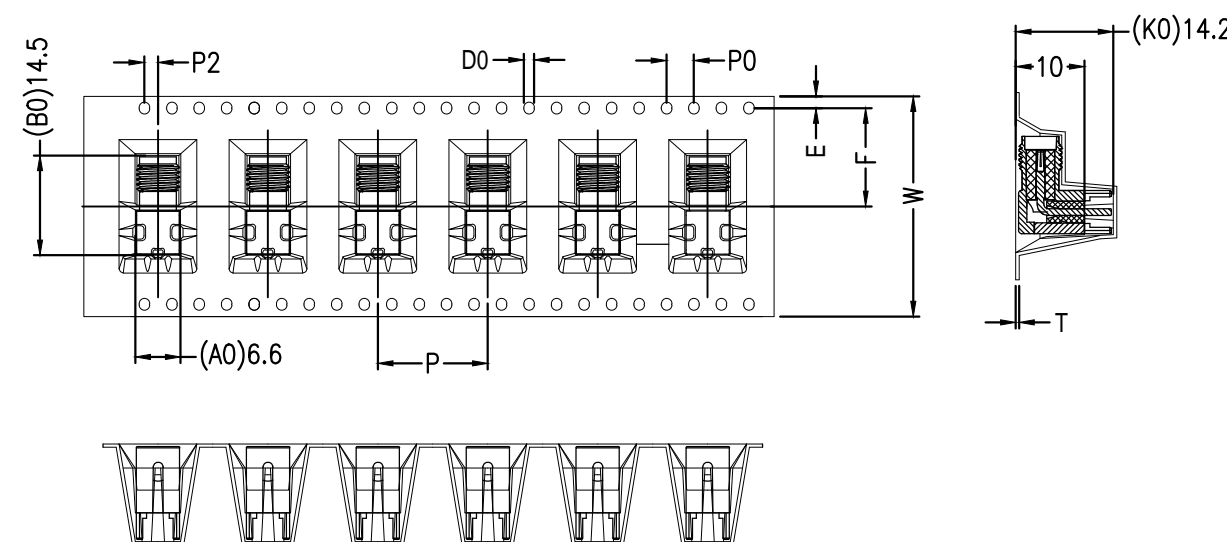
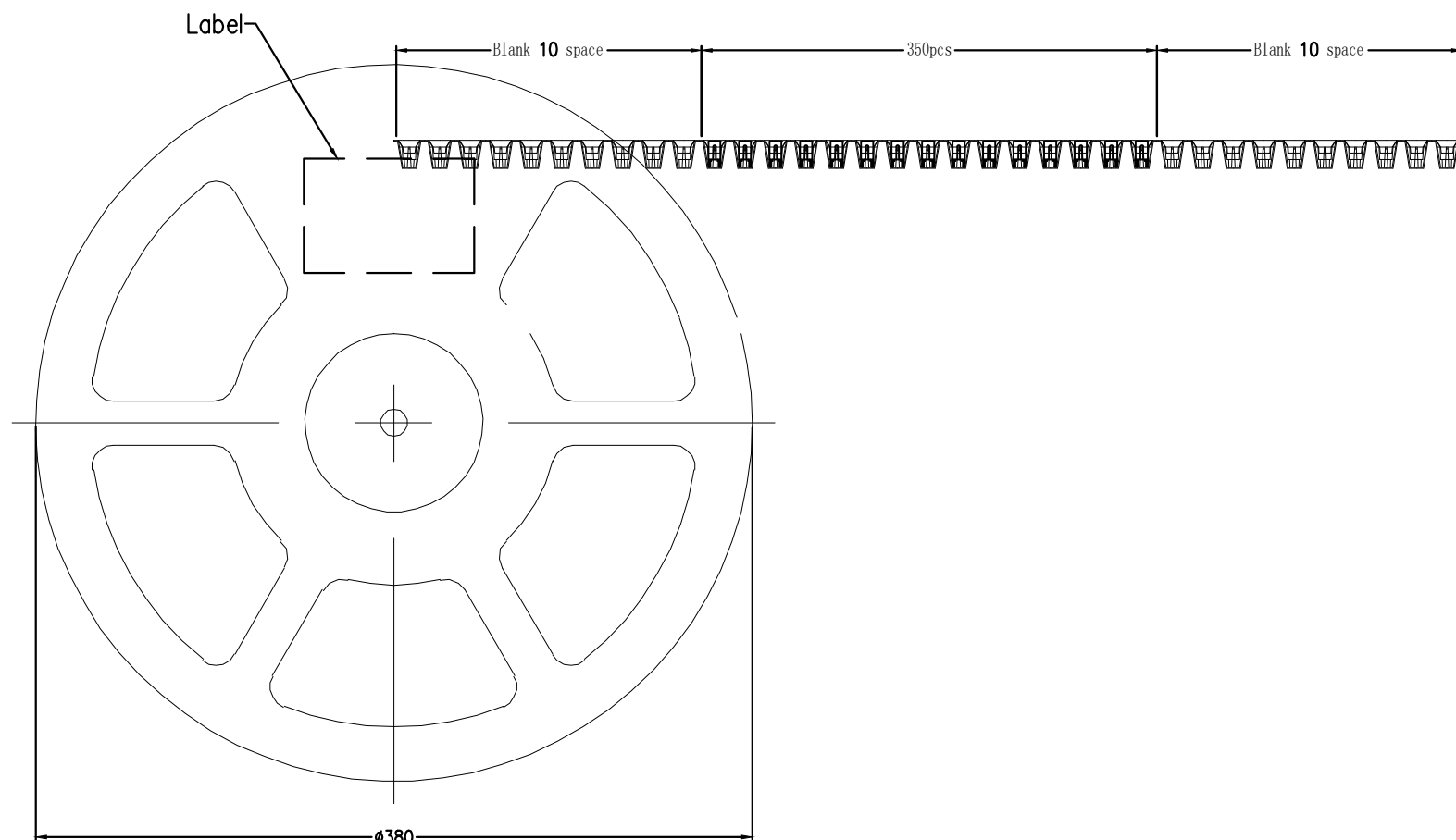
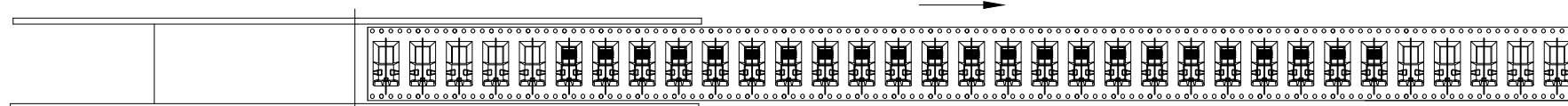
REVISIONS

© COPYRIGHT 2004 By -

ALL RIGHTS RESERVED.

P	LTR	DESCRIPTION	DATE	DWN	APVD
-	-	SEE SHEET 1	-	-	-

FEED DIRECTION



symbol	AO	BO	KO	PO	P	P2
Spec	6.60±0.10	14.5±0.10	14.20±0.10	4.00±0.10	16.0±0.10	2.00±0.10
symbol	W	T	E	F	DO	
Spec	32.0±0.30	0.50±0.05	1.75±0.10	14.2±0.10	1.50±0.10	

THIS DRAWING IS A CONTROLLED DOCUMENT.

DWN ANSON MA 17MAR09

CHK RITA ZUO 17MAR09

APVD BOB ZHAO 17MAR09

PRODUCT SPEC

108-112000

APPLICATION SPEC

WEIGHT 0.000000

CUSTOMER DRAWING

**STE** TE Connectivity

NAME SMA RIGHT ANGLE PCB SOCKET DIE CAST

SIZE A3

CAGE CODE 00779

DRAWING NO C-1814400

RESTRICTED TO -

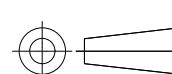
SCALE NTS

SHEET 2 OF 2

REV D1

DIMENSIONS:

mm



TOLERANCES UNLESS OTHERWISE SPECIFIED:

0	PLC	± 0.5
1	PLC	± 0.3
2	PLC	± 0.2
3	PLC	± -
4	PLC	± -
	ANGLES	± -

MATERIAL

SEE TABLE

FINISH

-