

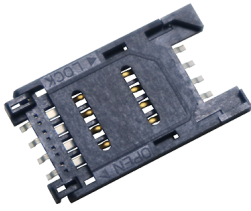
Operation : 8PIN MINI SIM & 铰链式识别卡座(强化结构)



LTEM NO.: SIM-011B-T8 (Consumer Electronics)

(L29.65mm × W17.20mm × H2.50mm)

MEMORY-CARD-SOCKETS



Technical parameter

内焊贴装 SMT

PROJECT	LEVEL	A[better product]	B[average product]
		Contact Rating	
Electrical Properties	Initial Contact Resistance	50mΩ max.	80mΩ max.
	Insulation Resistance	100MΩ min.500V DC	
	Withstand Voltage	500V AC for 1 minute	350 V AC for 1 minut
Durable Performance	There No Load	5,000 Cycles	3,500 Cycles
	Rated Load	3,500 Cycles	2,500 Cycles
	Storage temp.	-25℃~+85℃(Operating Temp:)	

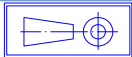
側向導入 LATERAL

精密部品 NICETY

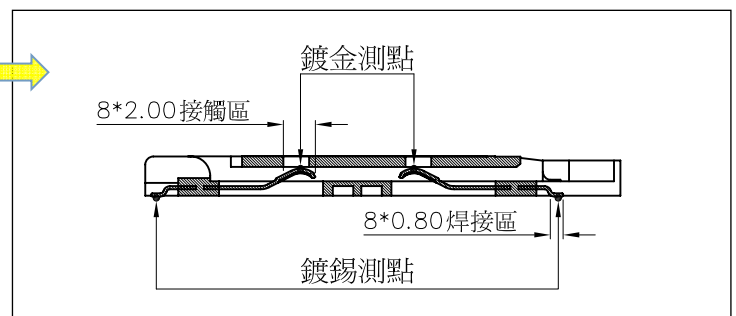
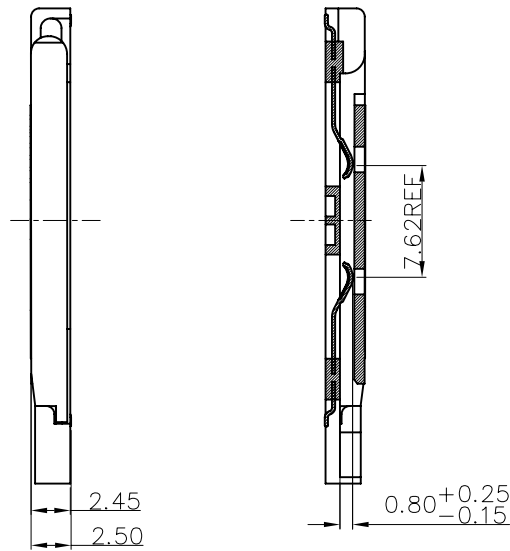
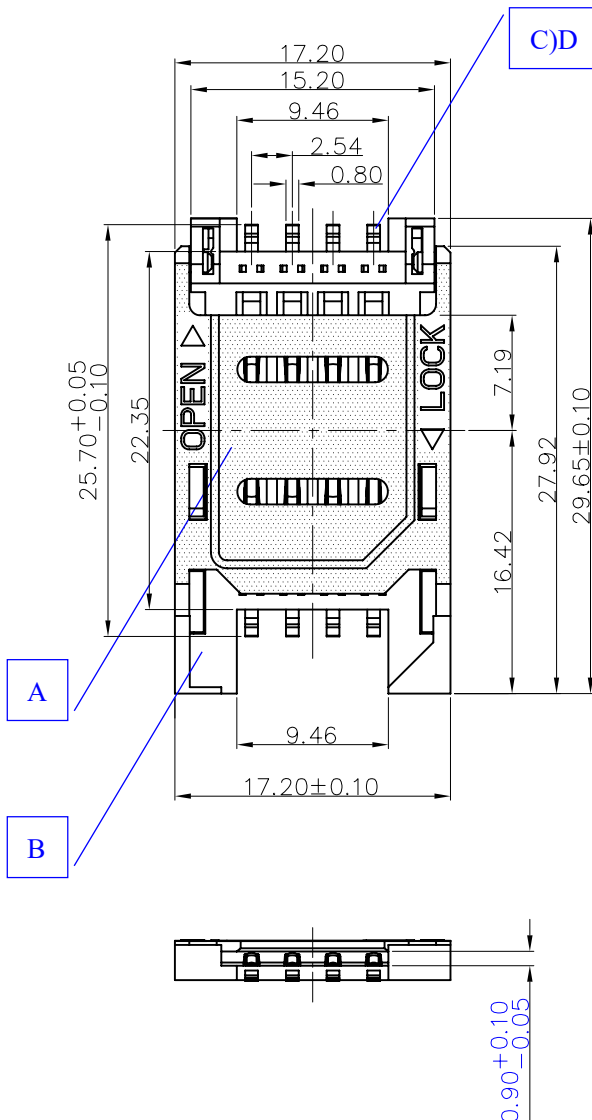
可靠 STABILIZE

適合環保 RoHS

Page1



Unit:mm

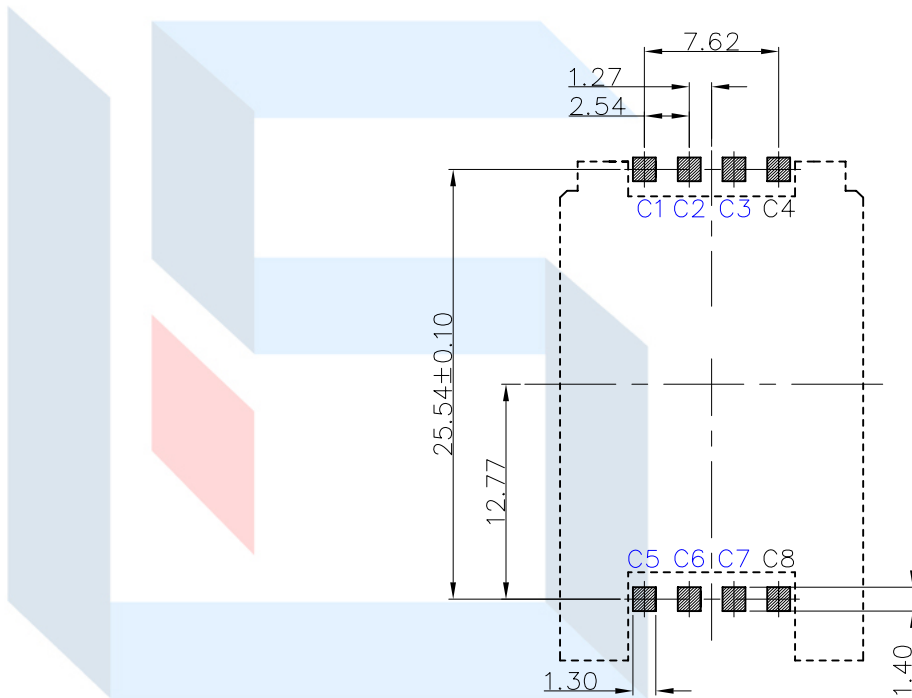


Operating Force

Inward 3.0~5.0N. (1N.=100gram-force)
 Exiting 3.0~5.0N. (1N.=100gram-force)

Solder-ability (Max.)

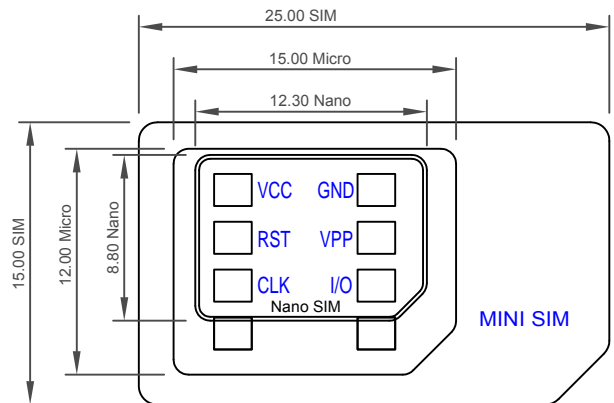
IR Reflow: 255°C, 5sec. Manual: 350°C, 3sec.



DECIMALS	ANGLES
X : ±0.50	X° : ±3°
X.X : ±0.35	X.X° : ±1°
X.XX : ±0.25	X.XX° : ±0.5°

Pin definition

T-Flash CARD			
Pin No.	Pin NAME	Type	Description
C ①	卡電源	1	VCC
C ②	復位	1	RST
C ③	時鐘	1	CLK
C ④	Reserved	1	Reserved
C ⑤	接地	1	GND
C ⑥	Vpp	1	VPP
C ⑦	輸入/輸出	1	I/O
C ⑧	Reserved	1	Reserved



Material declaration

NAME	MATERIAL	PLATING
A 外壳 SHELL	SUS301-3/4H(t=0.20mm)不锈钢【焊点镀金 1u"】	-
B 基座 HOUSING	LCP 30%G/F (Black)耐热塑胶	SET
C 检测端子 DETECT	C5191R-H (t=0.15mm)磷青铜【锡 30u" 基镀金 1u"】	G/F
D 接触端子 TERMINAL	C5191R-H (t=0.15mm)磷青铜【锡 30u" 基镀金 1u"】	G/F

本品不屬於危害性廢棄物,須丟棄時可以委託回收商予以回收再生處理。Products do not belong to hazardous waste, When waste can recycling processing

運送時本產品不要直接與水、酸鹼性化學物質接觸,或放置於含有以上氣體環境中,並且需要注意會有滑落、側翻的危險發生; 運輸過程中不能有碰撞或者擠壓,須保證溫度與濕度適中 [常溫 25°C, 濕度在 50°C 以內], 不可導致材料變形或氧化。

注記 NOTICE

1. 碩方公司擁有最終解釋權; The SOFNG company reserves the right of final interpretation;
2. 文件禁止外洩、轉載; Leaked and reproduced prohibited;
3. 未經授權修改無效。Modify is invalid.