

P/N CODE:C27981

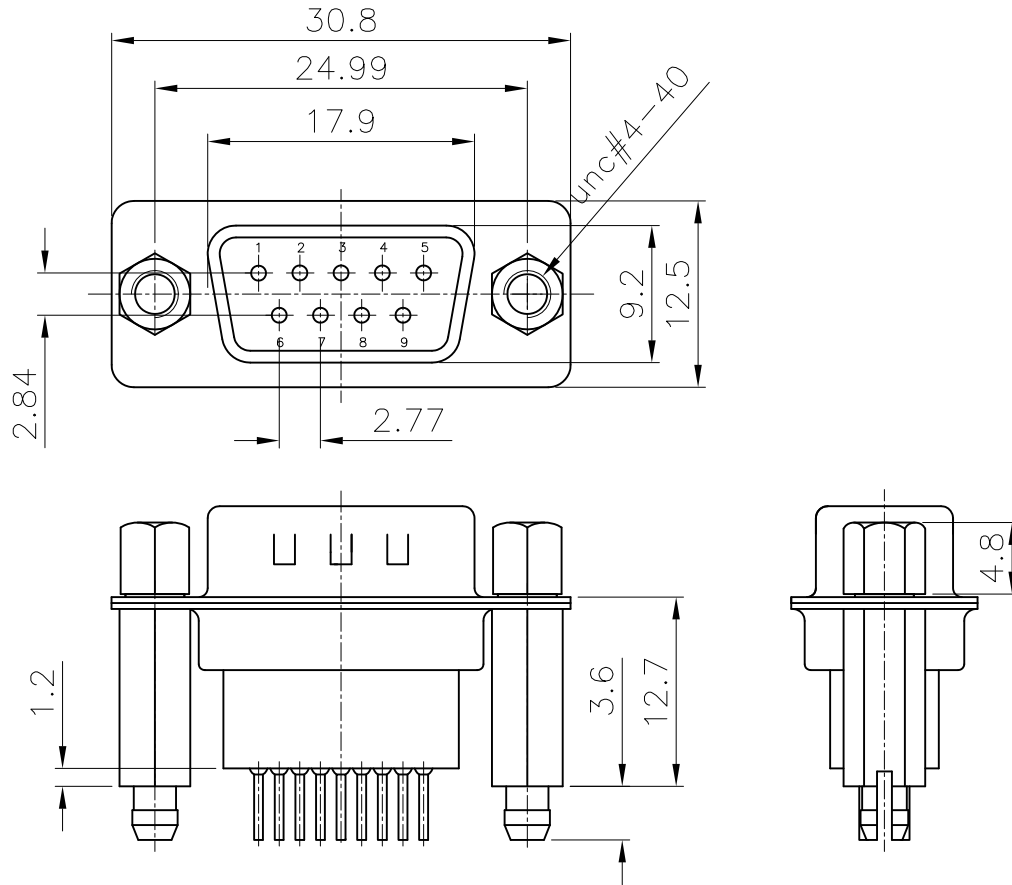
REV.	DESCRIPTION	DRAWN	CHECKED	APPROVED
A	NEW RELEASE	JLZ 06/12/16'	~	

NOTES:

- ELECTRICAL CHARACTERISTICS:
 - CONTACT RESISTANCE: 20mΩ Max. INITIAL.
 - DIELECTRIC WITHSTANDING VOLTAGE: 500V AC(rms) FOR 1 MINUTE.
 - INSULATION RESISTANCE: 1000MΩ Min.
- ENVIRONMENT CHARACTERISTICS:
 - TEMPERATURE: -40°C~+105°C.
- RESISTANCE TO SOLDERING HEAT: 260±5°C 5±0.5s.
- PRODUCT NUMBER CODE:

DS1034-01- X X X X X X - JC

- X: SCREW DIM. A
4: 4.80
- X: SCREW TYPE
4: BRJ TYPE (W/O washer)
- X: CONTACT PLATING
- 0: SELECTIVE GOLD FLASH
- X: SHELL PLATING
N: FORNT SHELL NICKEL, BACK SHELL TIN
- X: HOUSING COLOR
B: BLACK
- X: CONNECTOR TYPE
M: MALE
- X: No.OF CONTACTS
09: 9pos.



GENERAL TOLERANCE		ANGLE TOLERANCE		PROJECTION		TITLE	D-SUB DIP STRAIGHT WITH FORK TYPE	
X.	±0.60	X.	±5°	UNITS	mm			
.X	±0.38	.X	±3°	SHEET SIZE	A4	SERIES	DS1034-01 SERIES	
.XX	±0.25	.XX	±2°	晨翔电子有限公司 CONNFLY CONNFLY ELECTRONIC CO. LTD				
DRAWING TYPE		CUSTOMER						
SCALE	1:1	SHEET	1 OF 1					
DRAWING NO.		C-DS1034-01-XXXXXXX						