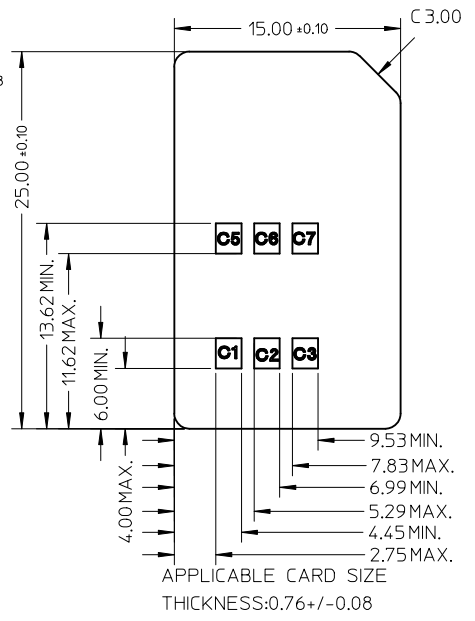
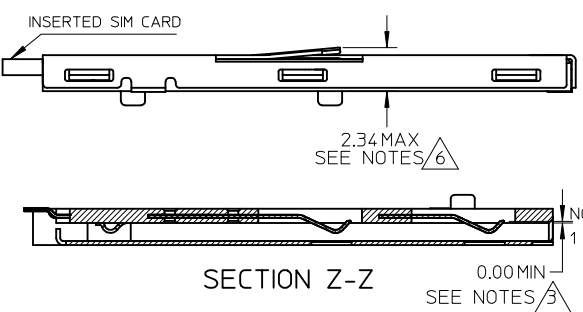


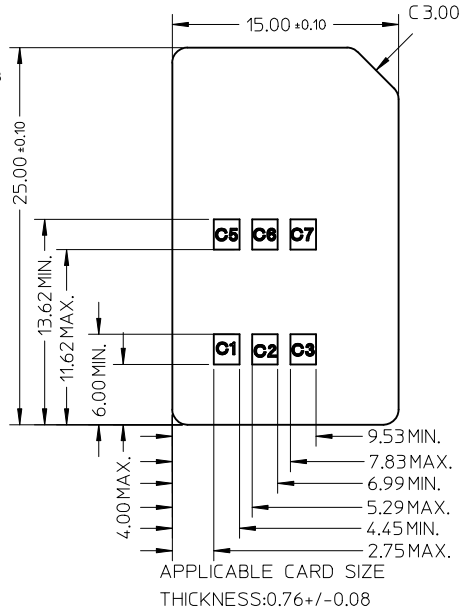
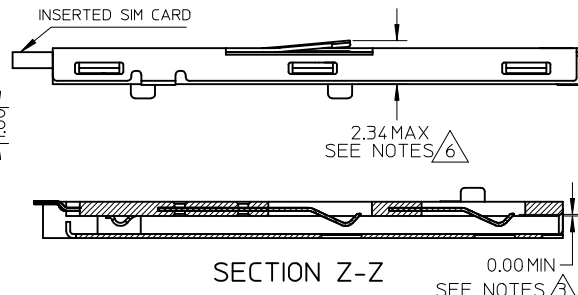
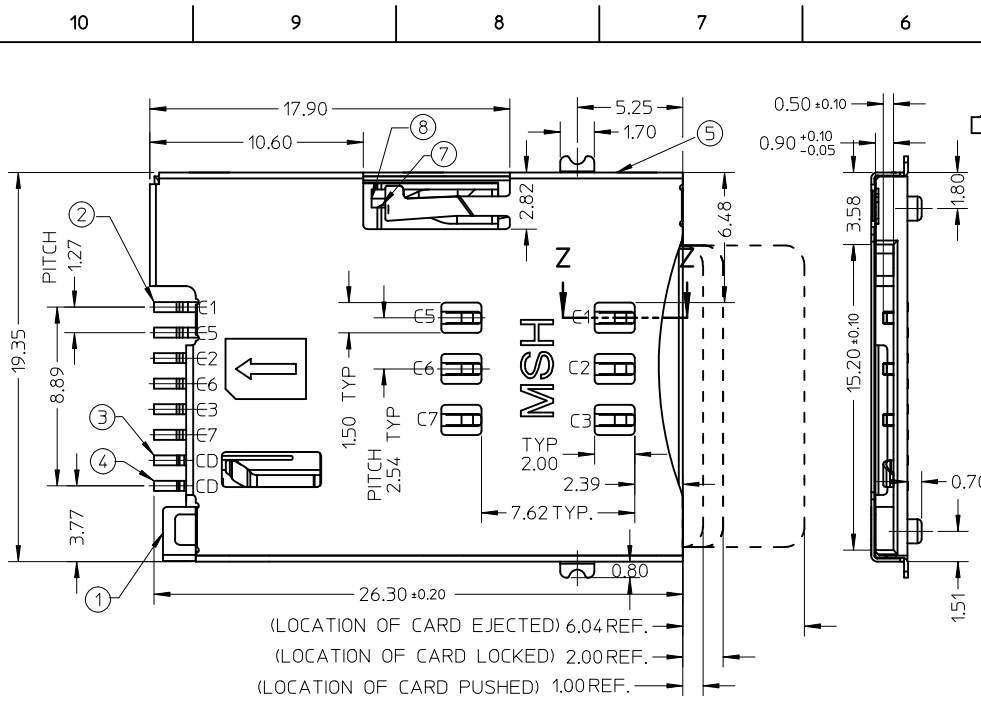
RECOMMENDED PCB LAYOUT TOLERANCE +/-0.05MM



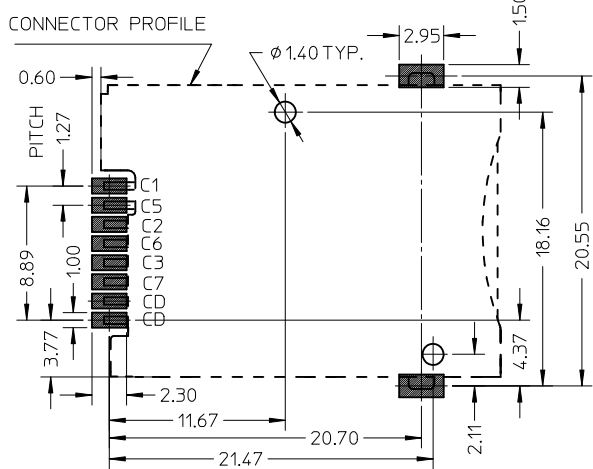
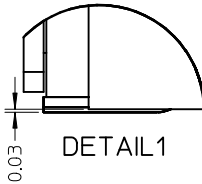
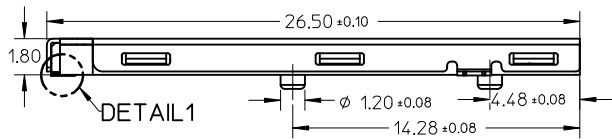
- NOTES:
- 1 FINISH:
 - 1-1 TERMINAL :
 - 50~200μ NICKEL UNDER PLATED
 - 15μ GOLD PLATING ON CONTACT AREA
 - 3μ MIN GOLD FLASH ON SOLDERING AREA
 - 1-2 SHELL :
 - 50~200μ NICKEL UNDER PLATED
 - 3μ MIN GOLD FLASH ON SOLDERING AREA
 - 1-3 DETECT PIN :
 - 50~200μ NICKEL UNDER PLATED
 - 3μ MIN GOLD PLATING ON CONTACT AREA
 - 3μ MIN GOLD PLATING ON SOLDERING AREA
 - 2 SOLDER TAIL COPLANARITY: 0.08MM MAX.
 - 3 TERMINAL TIP MUST SINK INTO HOUSING
 - 4 PRODUCT COMPLIANT TO ROHS DIRECTIVE 2002/95/EC AND ELV DIRECTIVE 2000/53/EC
 - 5 DETECT SWITCH: INSERT CARD=ON (NORMAL=OPEN)
 - 6 SPRING RISE UP DURING PUSH-PUSH PERIOD
 - 7 PACKAGE DRAWING: PK-47553-001
 - 8 PRODUCT SPECIFICATION: PS-47553-201

| CARD INSERTED | | WITHOUT CARD | |
|---------------|------------------|--------------|--------------------------------|
| NO. | DESCRIPTION | Q'TY | MATERIAL |
| 1 | HOUSING | 1 | HIGH TEMPERATURE THERMOPLASTIC |
| 2 | TERMINAL | 6 | COPPER ALLOY |
| 3 | DETECT PIN LOWER | 1 | COPPER ALLOY |
| 4 | DETECT PIN UPPER | 1 | COPPER ALLOY |
| 5 | SHELL | 1 | STAINLESS STEEL |
| 6 | COIL SPRING | 1 | PIANO WIRE |
| 7 | HEART CAM | 1 | HIGH TEMPERATURE THERMOPLASTIC |
| 8 | CAM PIN | 1 | STAINLESS STEEL |

| NEW DIM TOL CTRL EC NO: DRW/KHL/IM CHKD:JTAN02 APPR: 2011/05/27 | QUALITY SYMBOLS ▽=0 ◁=0 | GENERAL TOLERANCES (UNLESS SPECIFIED) <table border="1"> <tr> <th></th> <th>mm</th> <th>INCH</th> </tr> <tr> <td>4 PLACES</td> <td>±---</td> <td>±---</td> </tr> <tr> <td>3 PLACES</td> <td>±---</td> <td>±---</td> </tr> <tr> <td>2 PLACES</td> <td>±0.15</td> <td>±---</td> </tr> <tr> <td>1 PLACE</td> <td>±---</td> <td>±---</td> </tr> <tr> <td colspan="3">ANGULAR ±---°</td> </tr> </table> | | mm | INCH | 4 PLACES | ±--- | ±--- | 3 PLACES | ±--- | ±--- | 2 PLACES | ±0.15 | ±--- | 1 PLACE | ±--- | ±--- | ANGULAR ±---° | | | DIMENSION STYLE MM ONLY | SCALE NTS | DESIGN UNITS METRIC | THIRD ANGLE PROJECTION |
|---|---|---|-------------------------------------|---|--------------------|----------------------------|------|------|----------|------|------|----------|-------|------|---------|------|------|---------------|--|--|-----------------------------------|---------------------|-------------------------------|------------------------|
| | | mm | INCH | | | | | | | | | | | | | | | | | | | | | |
| | 4 PLACES | ±--- | ±--- | | | | | | | | | | | | | | | | | | | | | |
| | 3 PLACES | ±--- | ±--- | | | | | | | | | | | | | | | | | | | | | |
| 2 PLACES | ±0.15 | ±--- | | | | | | | | | | | | | | | | | | | | | | |
| 1 PLACE | ±--- | ±--- | | | | | | | | | | | | | | | | | | | | | | |
| ANGULAR ±---° | | | | | | | | | | | | | | | | | | | | | | | | |
| DRAWN BY LHSNEN DATE 2007/07/09 | CHECKED BY XUXIANG DATE 2007/08/30 | APPROVED BY HWWANG DATE 2007/08/30 | MATERIAL NO. 475532001 | TITLE PUSH PUSH 6 PINS SIM WITH DETECT PIN&POST SALES DRAWING | MOLEX INCORPORATED | SHEET NO. 1 OF 1 | | | | | | | | | | | | | | | | | | |
| DRAFT WHERE APPLICABLE MUST REMAIN WITHIN DIMENSIONS | SIZE A3 | THIS DRAWING CONTAINS INFORMATION THAT IS PROPRIETARY TO MOLEX INCORPORATED AND SHOULD NOT BE USED WITHOUT WRITTEN PERMISSION | DOCUMENT NO. SD-47553-201 | | | | | | | | | | | | | | | | | | | | | |



- NOTES:
- 1 FINISH:
 - 1-1 TERMINAL :
 - 50~200µ NICKEL UNDER PLATED
 - 15µ GOLD PLATING ON CONTACT AREA
 - 3µ MIN GOLD FLASH ON SOLDERING AREA
 - 1-2 SHELL :
 - 50~200µ NICKEL UNDER PLATED
 - 3µ MIN GOLD FLASH ON SOLDERING AREA
 - 1-3 DETECT PIN :
 - 50~200µ NICKEL UNDER PLATED
 - 3µ MIN GOLD PLATING ON CONTACT AREA
 - 3µ MIN GOLD PLATING ON SOLDERING AREA - 2 SOLDER TAIL COPLANARITY: 0.08MM MAX.
 - 3 TERMINAL TIP MUST SINK INTO HOUSING
 - 4 PRODUCT COMPLIANT TO ROHS DIRECTIVE 2002/95/EC AND ELV DIRECTIVE 2000/53/EC
 - 5 DETECT SWITCH: INSERT CARD=ON (NORMAL=OPEN)
 - 6 SPRING RISE UP DURING PUSH-PUSH PERIOD
 - 7 PACKAGE DRAWING: PK-47553-001
 - 8 PRODUCT SPECIFICATION: PS-47553-201



RECOMMENDED PCB LAYOUT TOLERANCE +/- 0.05MM



| NO. | DESCRIPTION | Q'TY | MATERIAL |
|-----|------------------|------|--------------------------------|
| 1 | HOUSING | 1 | HIGH TEMPERATURE THERMOPLASTIC |
| 2 | TERMINAL | 6 | COPPER ALLOY |
| 3 | DETECT PIN LOWER | 1 | COPPER ALLOY |
| 4 | DETECT PIN UPPER | 1 | COPPER ALLOY |
| 5 | SHELL | 1 | STAINLESS STEEL |
| 6 | COIL SPRING | 1 | PIANO WIRE |
| 7 | HEART CAM | 1 | HIGH TEMPERATURE THERMOPLASTIC |
| 8 | CAM PIN | 1 | STAINLESS STEEL |

| | | | | | | | | | | | | | |
|---|-----------------------------------|-----------------------|--|--|--|---------------------------------------|--|---|--|---|--|------------------------|--|
| <p>NEW DIM TOL CTRL EC NO: DRW/KHL/IM CHKD: JTAN02 APPR: REV</p> | <p>DESCRIPTION 2011/05/27</p> | QUALITY SYMBOLS | | GENERAL TOLERANCES (UNLESS SPECIFIED) | | DIMENSION STYLE MM ONLY | | SCALE NTS | | DESIGN UNITS METRIC | | THIRD ANGLE PROJECTION | |
| | | ▼=0 | | mm INCH | | DRAWN BY DATE LHSHEN 2007/07/09 | | TITLE | | <p>PUSH PUSH 6 PINS SIM WITH DETECT PIN&POST SALES DRAWING</p> | | | |
| | | ▽=0 | | 4 PLACES ± --- ± --- | | CHECKED BY DATE XUXIANG 2007/08/30 | | MATERIAL NO. | | | | | |
| | | ◇=0 | | 3 PLACES ± --- ± --- | | APPROVED BY DATE HWWANG 2007/08/30 | | DOCUMENT NO. | | | | | |
| | | 2 PLACES ± 0.15 ± --- | | ANGULAR ± --- ° | | 475532001 | | SD-47553-201 | | SHEET NO. 1 OF 1 | | | |
| | | 1 PLACE ± --- ± --- | | DRAFT WHERE APPLICABLE MUST REMAIN WITHIN DIMENSIONS | | SIZE A3 | | THIS DRAWING CONTAINS INFORMATION THAT IS PROPRIETARY TO MOLEX INCORPORATED AND SHOULD NOT BE USED WITHOUT WRITTEN PERMISSION | | | | | |