



## Super Slide™ (Standard Type) RS\*\*1 Series

### Insulated lever

Part number	<b>RS201111J011</b>	
Number of resistor elements	Single-unit	
Direction of lever	Vertical	
Travel	20mm	
Lever type	J-1	
Length of lever	5mm	
Total resistance	10kΩ	
Resistance taper	1B	
Detent	Without	
Mounting plate	Without	
Operating temperature range	-25°C to +70°C	
Electrical performance	Total resistance tolerance	±20%
	Maximum operating voltage	200V AC, 10V DC
	Rated power	0.1W
	Insulation resistance	100MΩ min. 250V DC
	Voltage proof	300V AC for 1 minute
Mechanical performance	Operating force	0.3 to 2.5N
	Stopper strength	50N
	Lever push-pull strength	50N
	Lever wobble (Both	1mm

side)

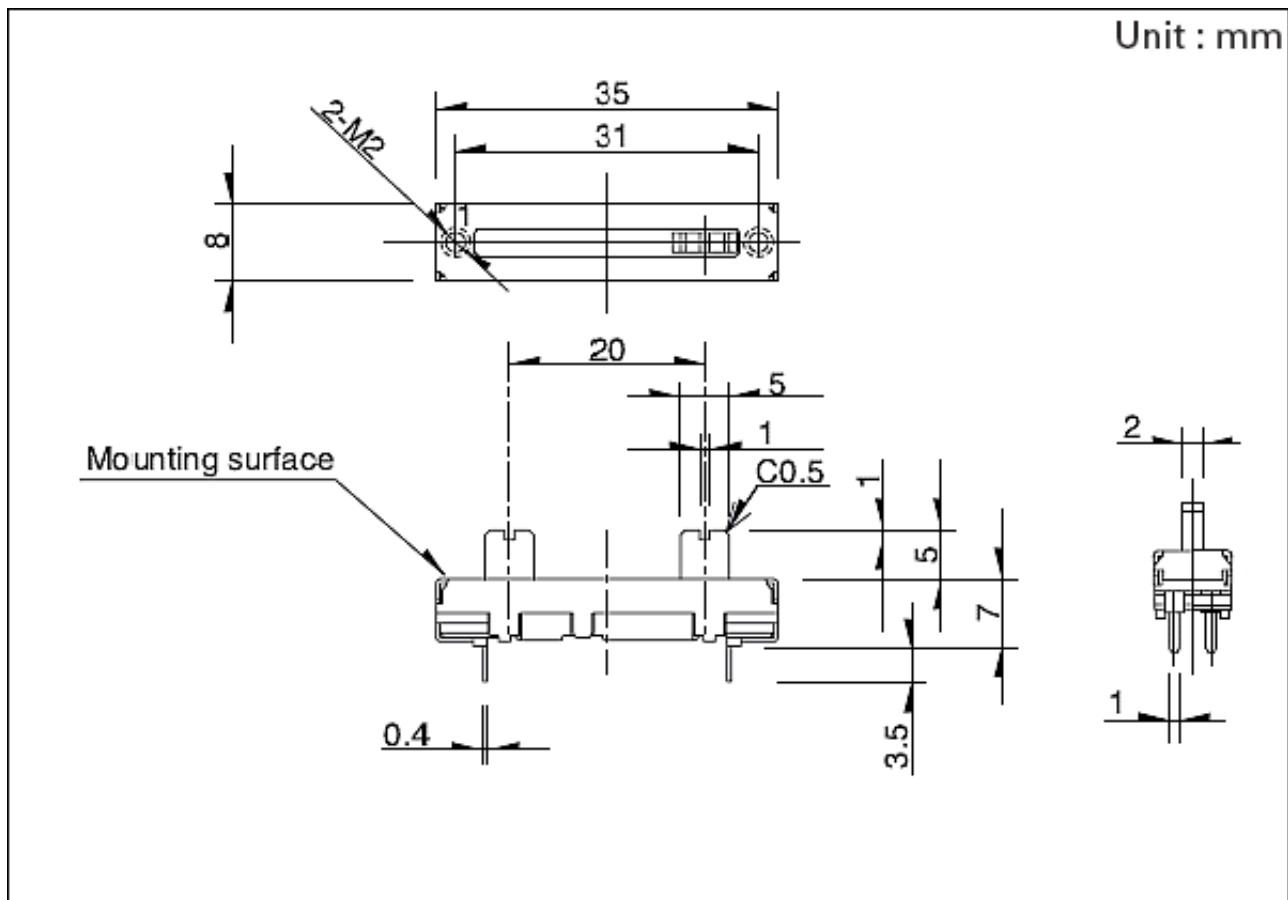
Lever deviation 0.5mm max.  
(One side)

Durability Operating life 15,000 cycles

Minimum order unit Japan 700  
(pcs.)

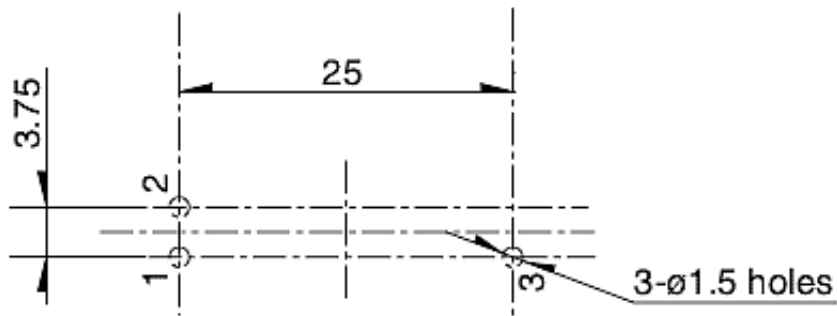
Export 2,800

## Dimensions



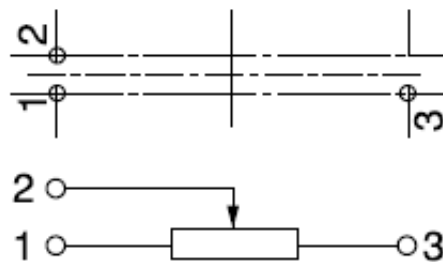
## Mounting Hole Dimensions

Unit : mm



Viewed from mounting side.

## Terminal Layout / Circuit Diagram



## Packing Specifications

### Tray

Number of packages (pcs.)	1 case / Japan	700
------------------------------	----------------	-----

	1 case / export packing	2,800
--	----------------------------	-------

