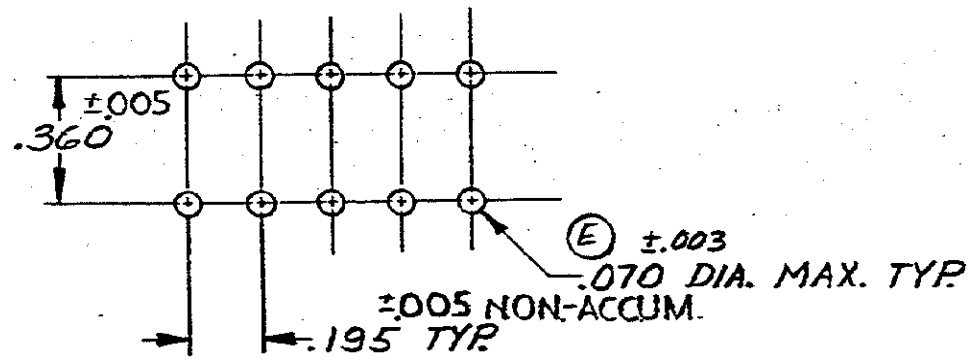
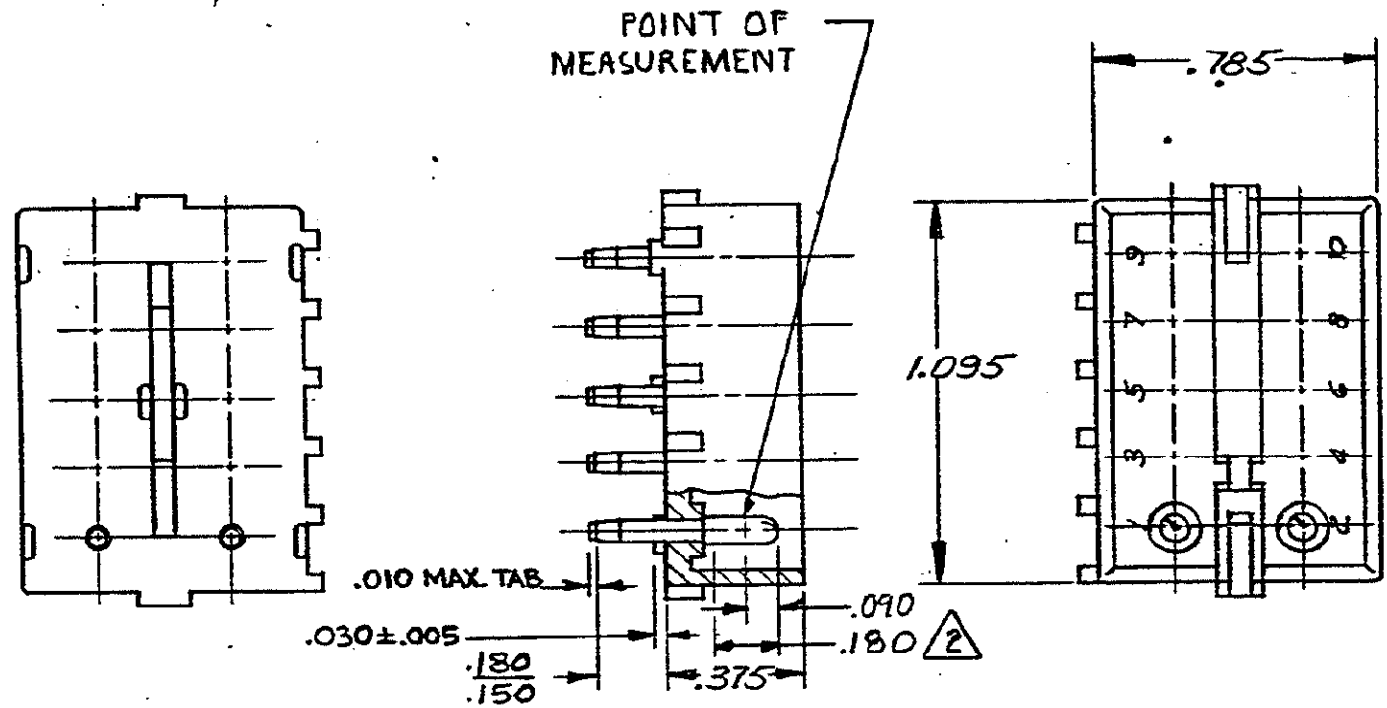


2

S



RECOMMENDED LAYOUT FOR
.062 P.C. BOARD

- PARTS COMPLY WITH TE SOLDERABILITY SPEC. NO. 109-11-3.
- CONTACT IS PLATED OVERALL WITH .000050 NICKEL, THEN .000030 GOLD OVER CONTACT LENGTH INDICATED AND TIN PLATED ON SOLDER TAIL END.

SUPERSEDED BY 2-1586544-0 ~~2-380991-0 NYLON - NATURAL COPPER ALLOY - GOLD~~

1-380991-0 NYLON - NATURAL COPPER ALLOY - PRE-TIN
ASSEMBLY NO. H56. MATL & COLOR. PIN MATL & FINISH.

DR G. Edman 6-12-73		MATERIAL AND FINISH SEE-TABLE		STE TE Connectivity	
CHK E. Cromer 6-13-73		WIRE - RANGE - INSULATION # - # - #		CLASS #	
DE		TOLERANCE EXCEPT AS NOTED ± .015 ± 1° 0'		TYPE #	
APP C. P. [Signature]		SCALE #		LOC CM B NO 380991. REV T3	
NAME		10 CIRCUIT MATE-N-LOK P.C. BOARD PIN HEADER			

REVISION RECORD					REQUIRED PER ASSEMBLY				
REV	DESCRIPTION	BY	CHK	DATE	QTY	UNIT	DESCRIPTION	BY	DATE
T3	REVISED PER ECR-18-008156	JB	DZ	19 JUN 2018					
T2	REVISED PER ECR-13-008342	AV	RP	12 NOV 13					
T1	REVISED PER ECO-11-005294	RK	HMR	08 APR 11					
LTR	REVISION RECORD	DR	CHK	DATE					

DIMENSIONS IN INCHES. DO NOT SCALE PRINT.

